

SHOW
HOME

THE FINLEY

1,409 SQ FT | 5 BED | 3.5 BATH

353 CREEKSIDE DRIVE SW



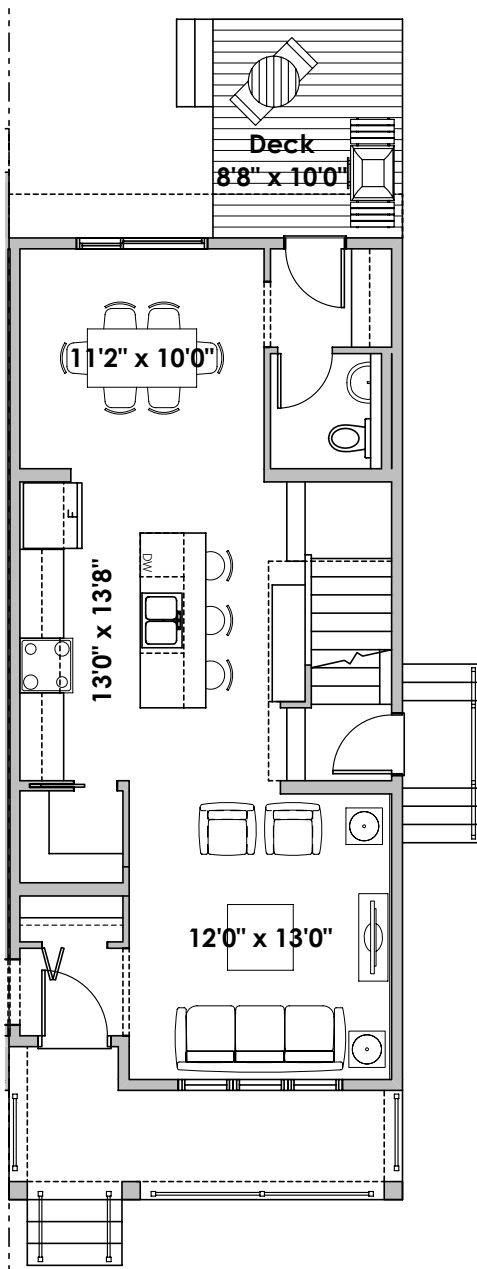
THIS DUPLEX HOME FEATURES

- Large kitchen island, perfect for cooking and gathering
- Convenient side entrance
- 87 sq ft deck for relaxing or entertaining
- Gas line ready for your BBQ
- Fully finished basement with 2 extra bedrooms
- 3 spacious bedrooms upstairs
- Charming wood front porch

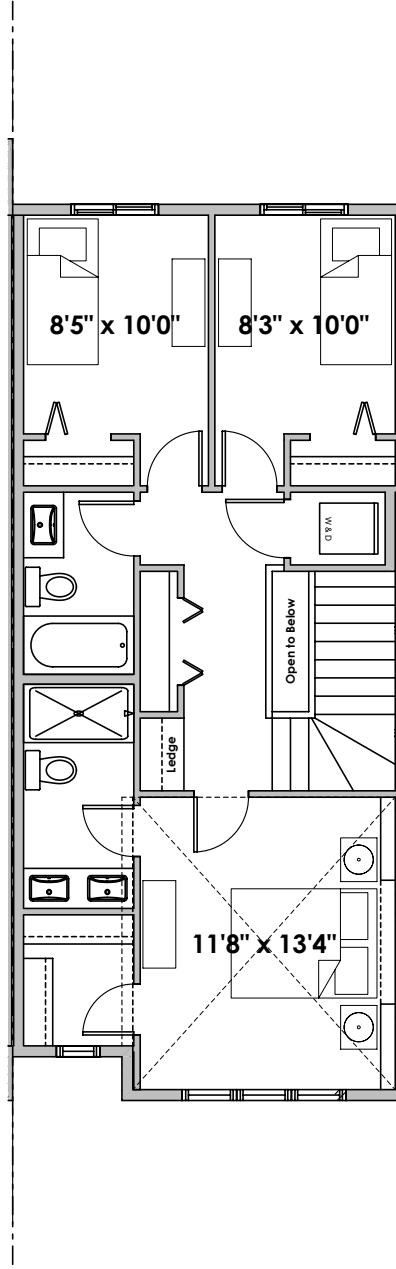
BETTER VALUE BY DESIGN
SINCE 1978 | HOMESBYAVI.COM

Homes by **AVI**

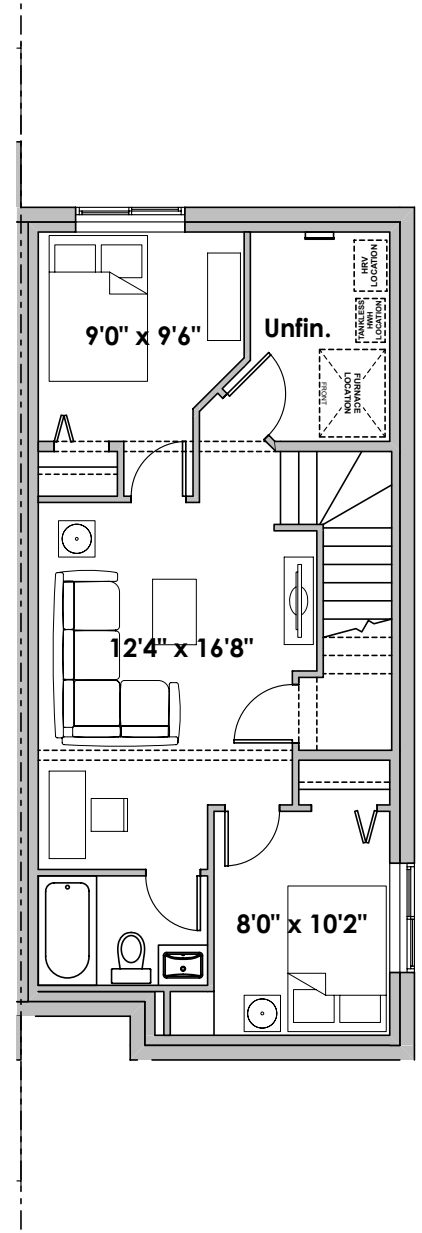
FLOOR PLAN



MAIN
692 SQ FT



UPPER
717 SQ FT



BASEMENT
499 SQ FT
FINISHED AREA

For more information or to book an appointment please contact us at **403.536.7038**

Prices are subject to change without notice. Actual floor plan, elevation, and square footage may not be exactly as shown. Square footage is measured to Alberta Building Code (ABC) regulations. Builder reserves the right to make changes without notice. E&OE.

Homes by **AVI**