

QUICK
POSSESSION

THE PERCY

1,866 SQ FT | 3 BED + FLEX | 2.5 BATH

2435 - 209 STREET NW



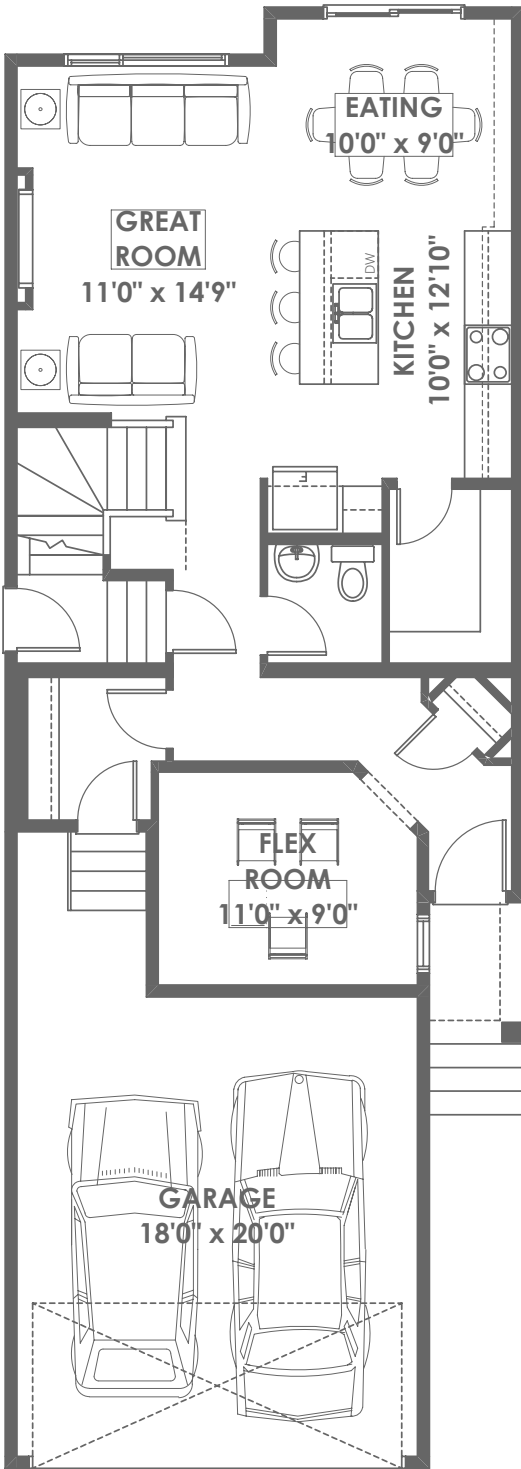
THIS FRONT DRIVE HOME FEATURES

- Side entrance for future suite.
- Electric fireplace in great room with tile surround and mantle in great room.
- Ensuite complete with glass shower with tile surround, and dual sinks.
- Luxury vinyl plank flooring throughout main floor; luxury vinyl tile in bathrooms and laundry room.
- Quartz countertops with silgranit sink in kitchen; quartz with undermount sinks in upper floor bathrooms.
- Railing with iron spindles on staircase.

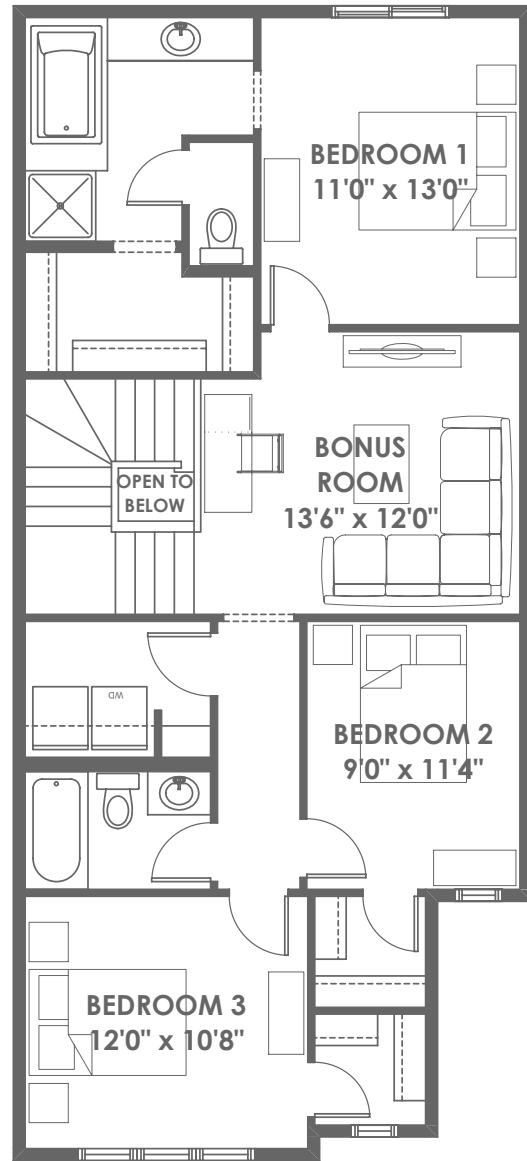
BETTER VALUE BY DESIGN
SINCE 1978 | HOMESBYAVI.COM

Homes by **AVI**

FLOOR PLAN



MAIN
844 SQ FT



UPPER
1,022 SQ FT

For more information or to book an appointment please contact us at **587.525.5200**

Prices are subject to change without notice. Actual floor plan, elevation, and square footage may not be exactly as shown. Square footage is measured to Alberta Building Code (ABC) regulations. Builder reserves the right to make changes without notice. E&OE.

Homes by **AVI**