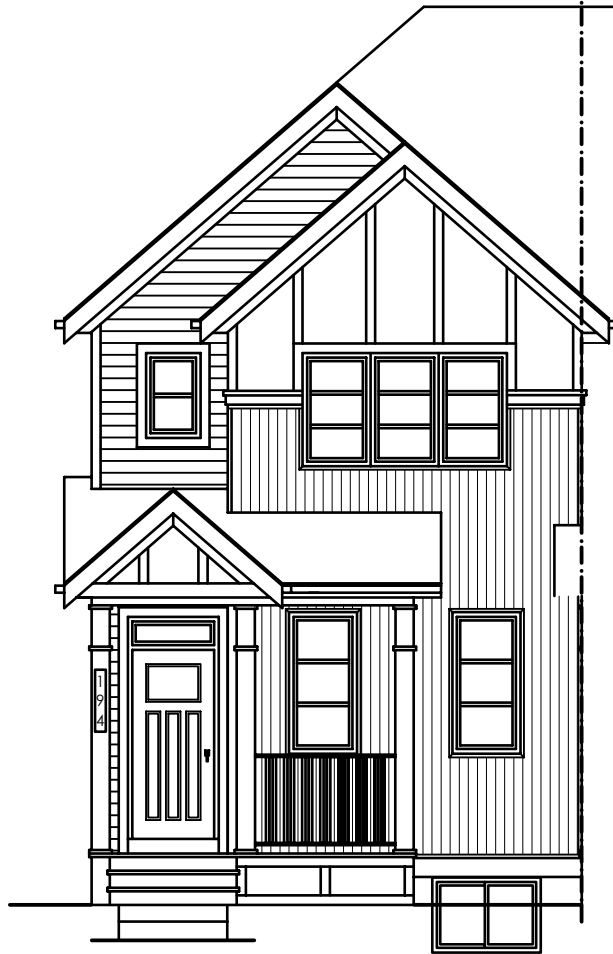


QUICK
POSSESSION

THE SASHA

1,523 SQ FT | 3 BED | 2.5 BATH

194 STARLING BLVD NW



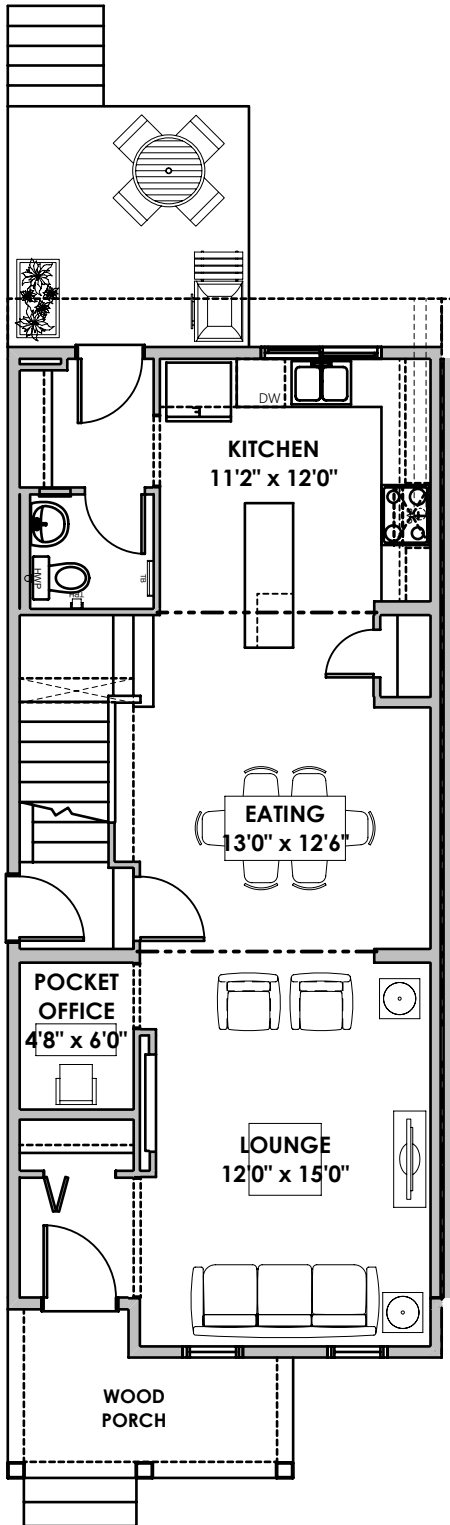
THIS DUPLEX HOME FEATURES

- Quartz countertops throughout
- 42" upper kitchen cabinets with riser to ceiling
- 2-bedroom legal suite rough-in with 9' foundation walls in basement
- Side entrance to basement
- 50" electric fireplace
- Upgraded lighting package
- Rough-in gas line in the kitchen and BBQ line at the rear deck
- Triple pane windows
- Front yard sod

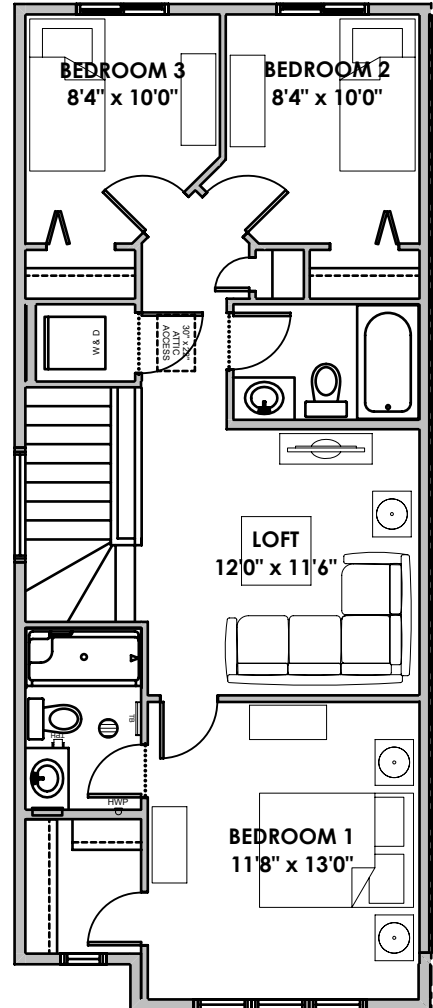
BETTER VALUE BY DESIGN
SINCE 1978 | HOMESBYAVI.COM

Homes by **AVI**

FLOOR PLAN



MAIN
746 SQ FT



UPPER
777 SQ FT

For more information or to book an appointment please contact us at **403.536.7198**

Prices are subject to change without notice. Actual floor plan, elevation, and square footage may not be exactly as shown. Square footage is measured to Alberta Building Code (ABC) regulations. Builder reserves the right to make changes without notice. E&OE.

Homes by **AVI**