

QUICK
POSSESSION

THE GREGORY

1,740 SQ FT | 4 BED | 3 BATH

680 LEWISBURG PLACE NE



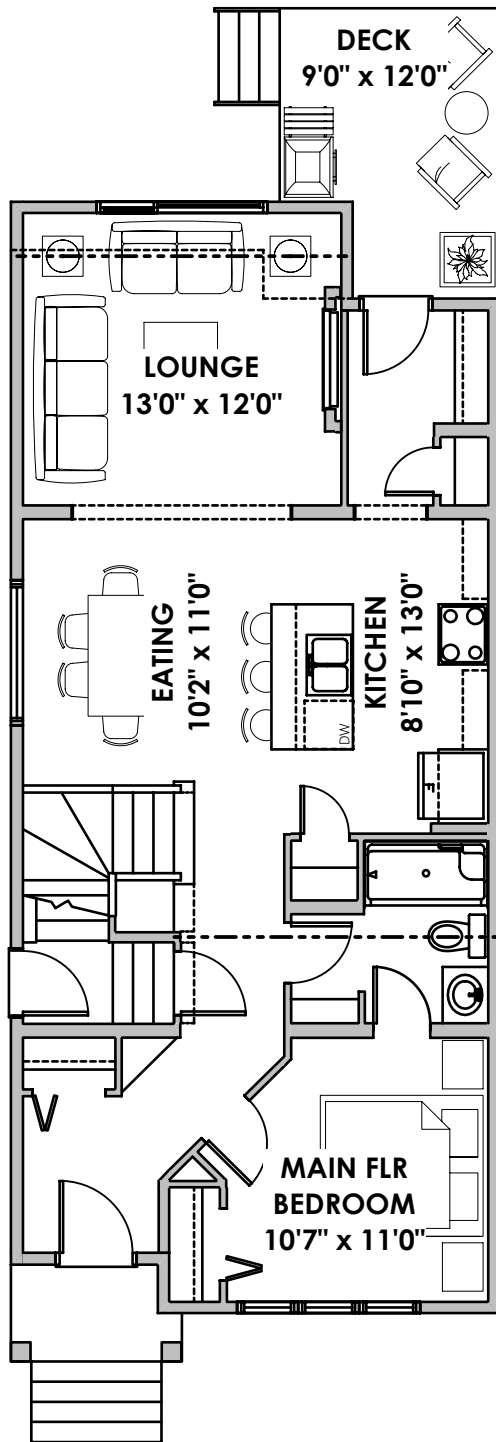
THIS LANED HOME FEATURES

- Main floor bedroom
- Side entry
- Bonus room
- Quartz throughout
- Chimney hood fan and built-in microwave
- Rear deck
- 9ft foundation walls
- Electric FP

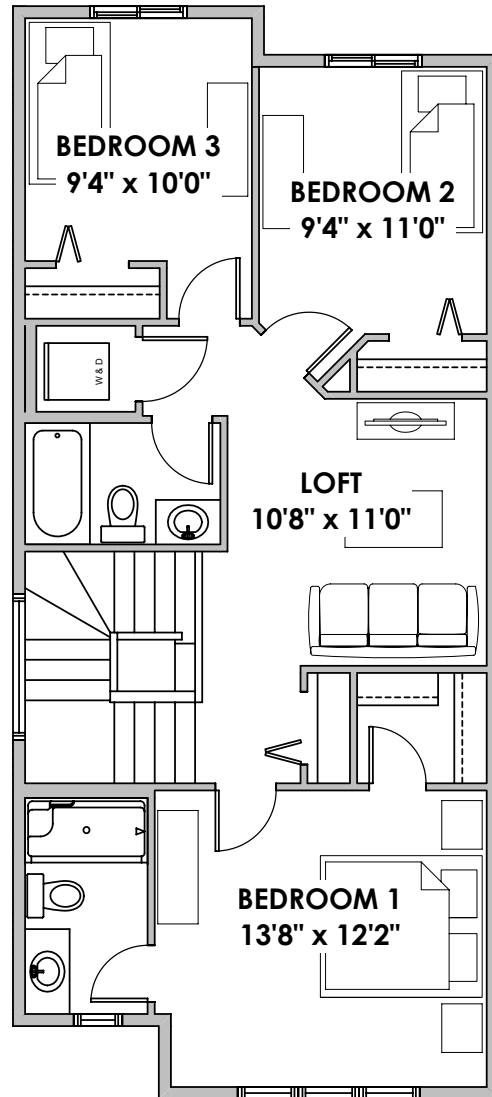
BETTER VALUE BY DESIGN
SINCE 1978 | HOMESBYAVI.COM

Homes by **AVI**

FLOOR PLAN



MAIN
884 SQ FT



UPPER
856 SQ FT

For more information or to book an appointment please contact us at **403.536.7252**

Prices are subject to change without notice. Actual floor plan, elevation, and square footage may not be exactly as shown. Square footage is measured to Alberta Building Code (ABC) regulations. Builder reserves the right to make changes without notice. E&OE.

Homes by **AVI**