

QUICK
POSSESSION

THE GREGORY

1,705 SQ FT | 4 BED | 3 BATH

402 STILES WAY



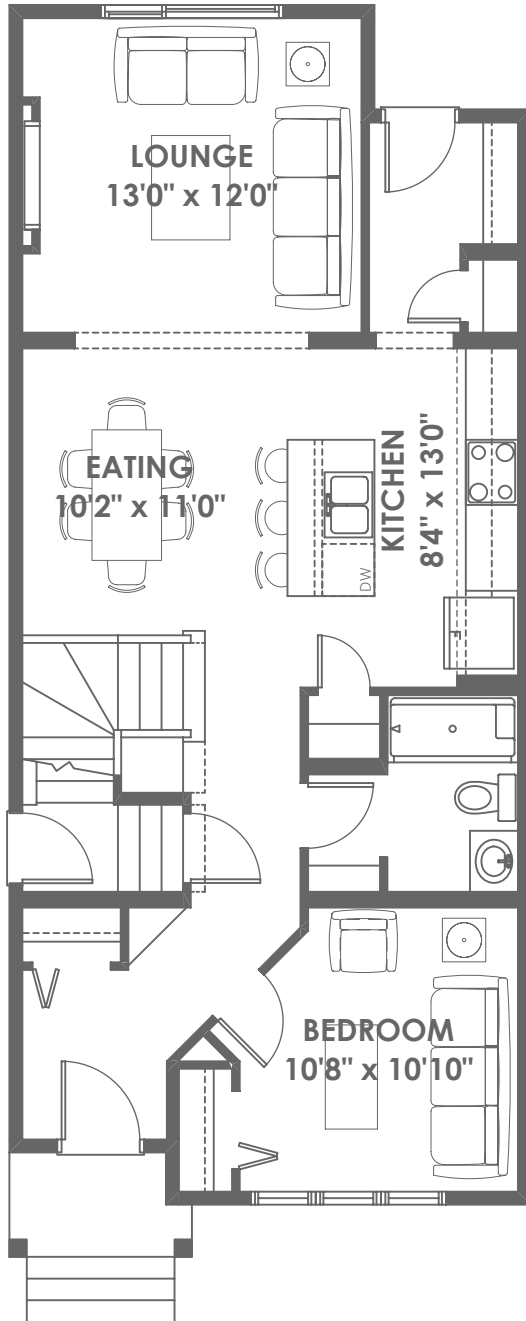
THIS LANED HOME FEATURES

- Bedroom on main floor.
- Bathroom on main floor.
- Side entrance.
- 5 piece ensuite.
- 2nd floor laundry room.

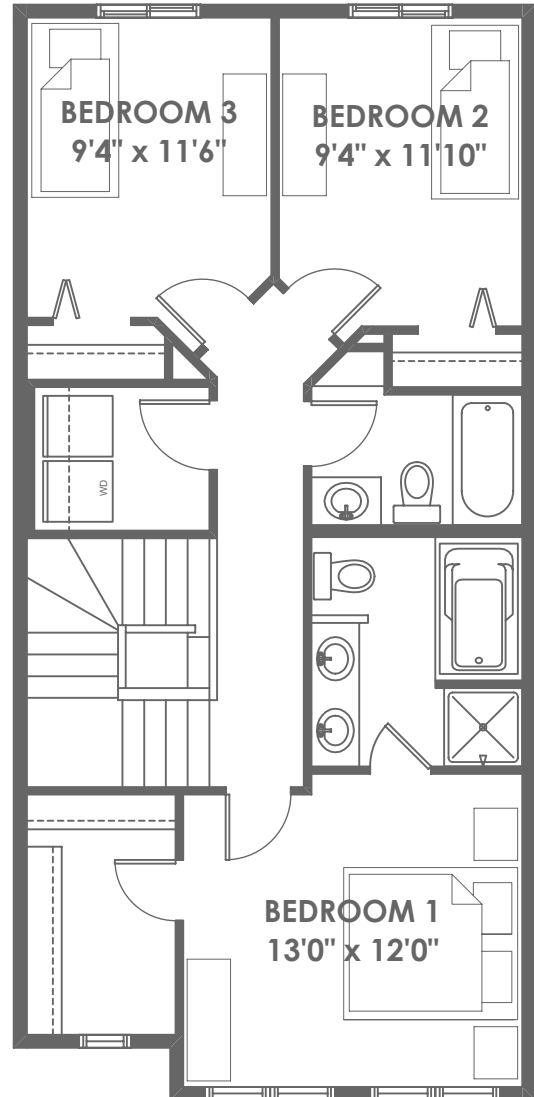
BETTER VALUE BY DESIGN
SINCE 1978 | HOMESBYAVI.COM

Homes by **AVI**

FLOOR PLAN



MAIN
884 SQ FT



UPPER
821 SQ FT

For more information or to book an appointment please contact us at **587.525.5194**

Prices are subject to change without notice. Actual floor plan, elevation, and square footage may not be exactly as shown. Square footage is measured to Alberta Building Code (ABC) regulations. Builder reserves the right to make changes without notice. E&OE.

Homes by **AVI**