

QUICK
POSSESSION

THE HAWTHORNE

2,370 SQ FT | 3 BED + FLEX | 2.5 BATH

23 REDBUD WAY, ST. ALBERT



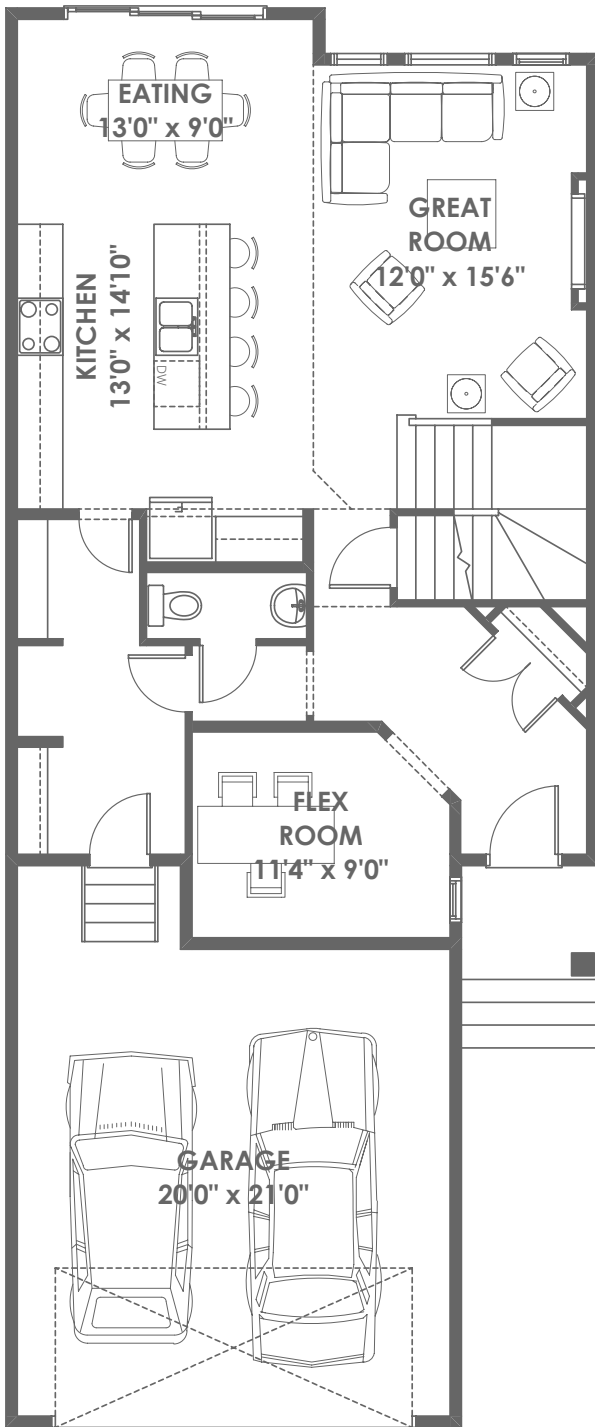
THIS FRONT DRIVE HOME FEATURES

- Steps away from a park, pond and natural reserve.
- Chimney hoodfan & built in microwave.
- 42" upper cabinets in the kitchen.
- Quartz countertops throughout.
- Iron spindle railing.
- LVP throughout the main floor.
- Loft bar with quartz countertops.

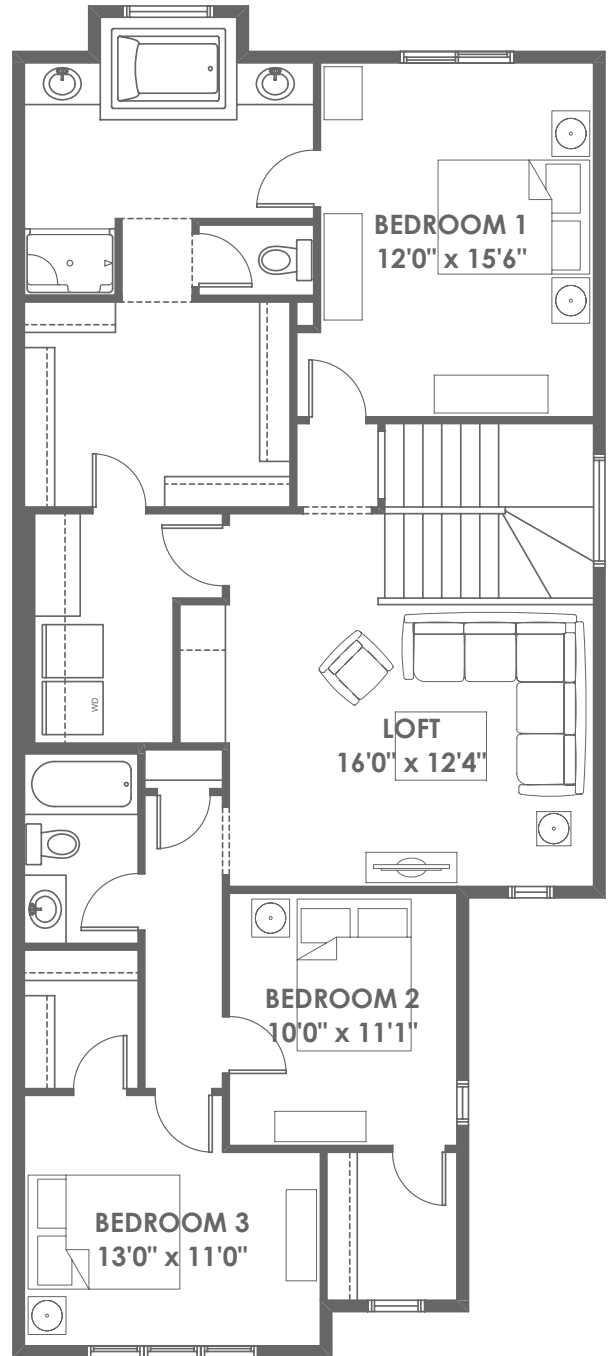
BETTER VALUE BY DESIGN
SINCE 1978 | HOMESBYAVI.COM

Homes by **AVI**

FLOOR PLAN



MAIN
1,001 SQ FT



UPPER
1,369 SQ FT

For more information or to book an appointment please contact us at **587.525.5092**

Prices are subject to change without notice. Actual floor plan, elevation, and square footage may not be exactly as shown. Square footage is measured to Alberta Building Code (ABC) regulations. Builder reserves the right to make changes without notice. E&OE.

Homes by **AVI**