

20'

# THE LAWSON

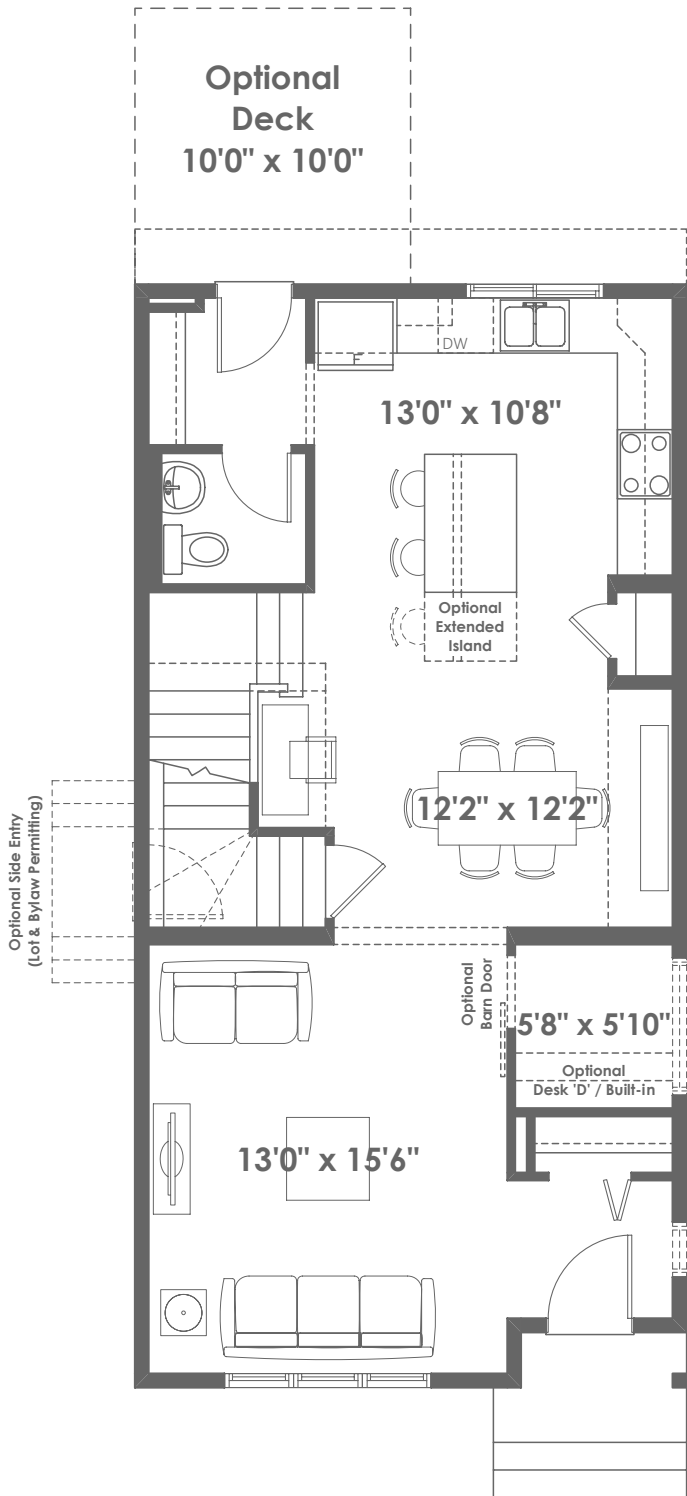
1,604+ SQ FT | 3 BED + LOFT | 2.5 BATH



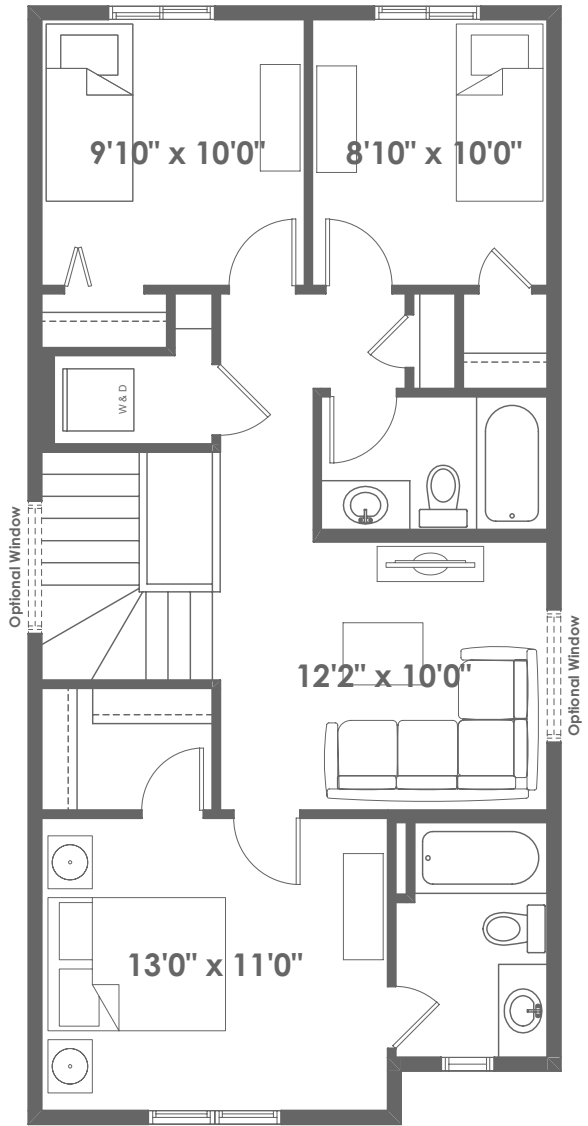
BETTER VALUE BY DESIGN  
SINCE 1978 | HOMESBYAVI.COM

Homes by **AVI**

# BASE FLOOR PLAN

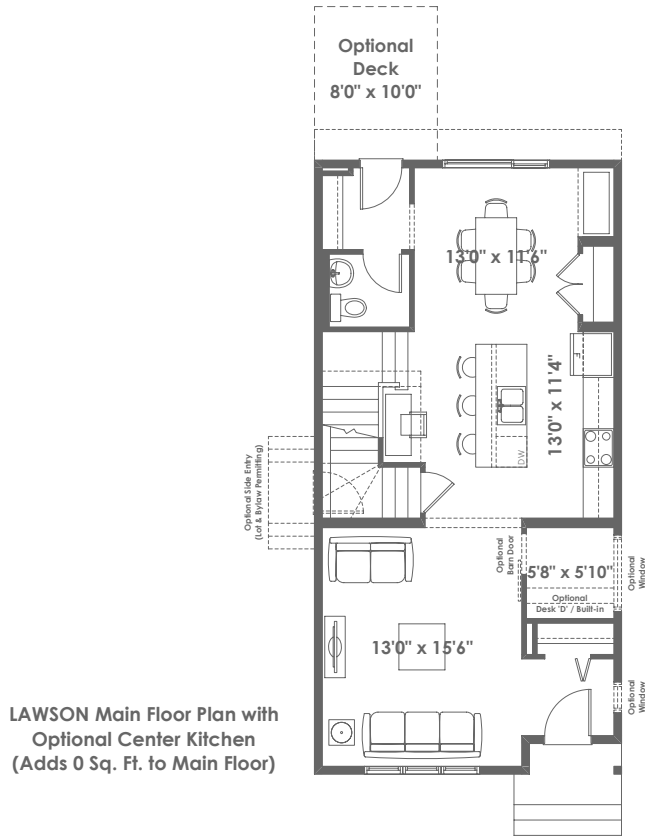


**MAIN**  
788 SQ FT

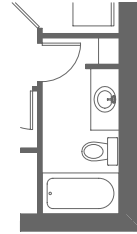


**UPPER**  
816 SQ FT

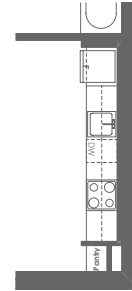
# FLOOR PLAN OPTIONS



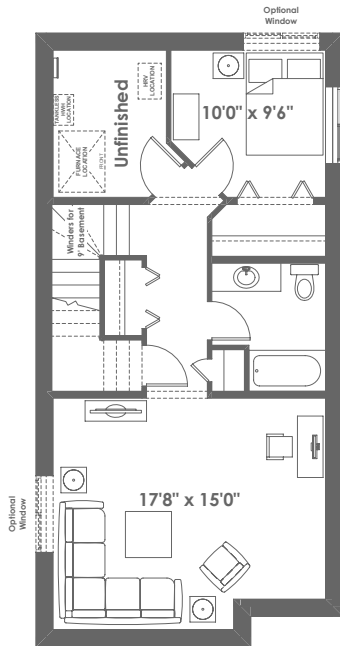
LAWSON Main Floor Plan with Optional Center Kitchen (Adds 0 Sq. Ft. to Main Floor)



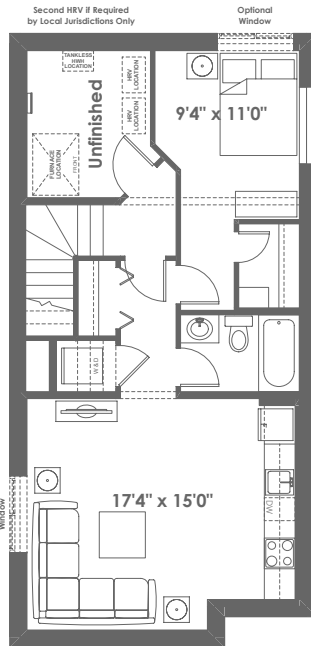
Partial 2 Bedroom Basement Suite Layout for Flat Front Elevations (Adds 12 Sq. Ft.)



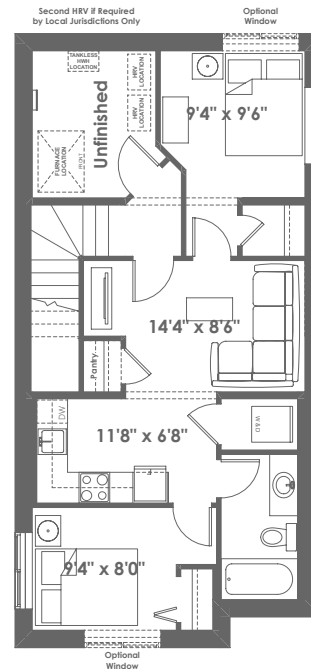
Partial 1 Bedroom Basement Suite Layout for Flat Front Elevations (Adds 12 Sq. Ft.)



LAWSON  
Optional 1 Bedroom Basement Room Layout  
570 Sq. Ft. (Finished Area)



LAWSON  
Optional 1 Bedroom Basement Suite Layout  
580 Sq. Ft. (Finished Area; Includes 9' Foundation Walls)



LAWSON  
Optional 2 Bedroom Basement Suite Layout  
574 Sq. Ft. (Finished Area; Includes 9' Foundation Walls)

BASEMENT SUITE MAY NOT CONFORM TO ALL MUNICIPALITIES; LAND USE BY-LAW & CODE MUST BE REVIEWED PRIOR TO ACCEPTANCE

BASEMENT SUITE MAY NOT CONFORM TO ALL MUNICIPALITIES; LAND USE BY-LAW & CODE MUST BE REVIEWED PRIOR TO ACCEPTANCE