

QUICK  
POSSESSION

# THE HALLADAY

1,934 SQ FT | 3 BED + FLEX | 2.5 BATH

2439 - 209 STREET NW



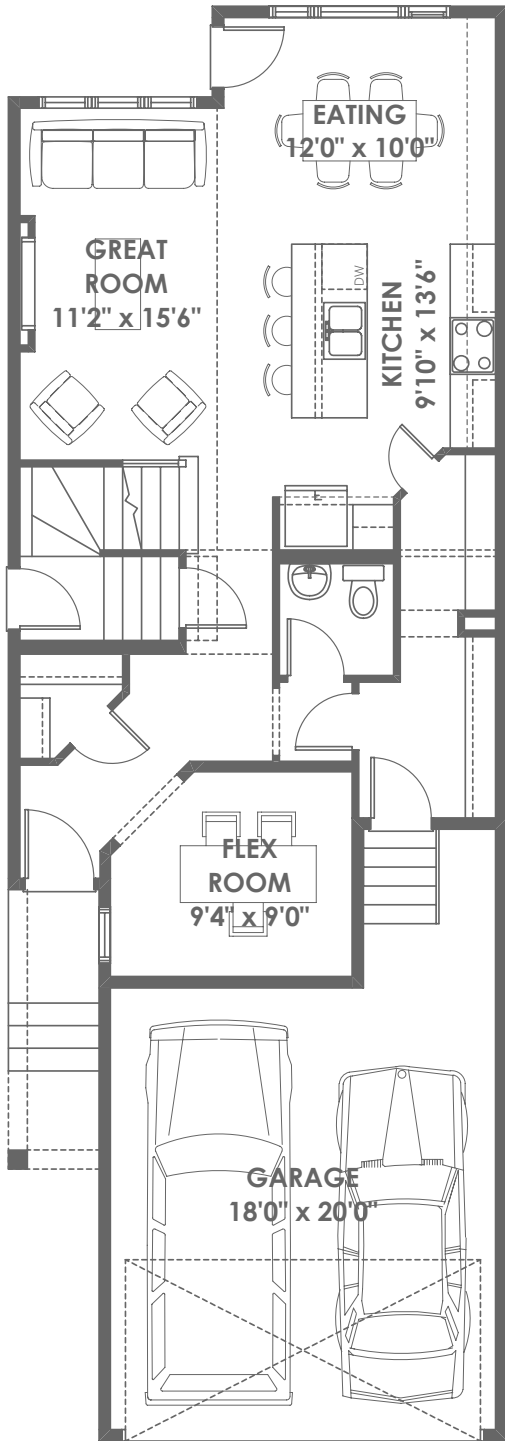
## THIS FRONT DRIVE HOME FEATURES

- 50" fireplace with wood mantle and tile.
- Granite undermount sink in kitchen.
- Matte black metal spindles.
- Beautifully curated interior color palette.
- Side entry with concrete walkway.

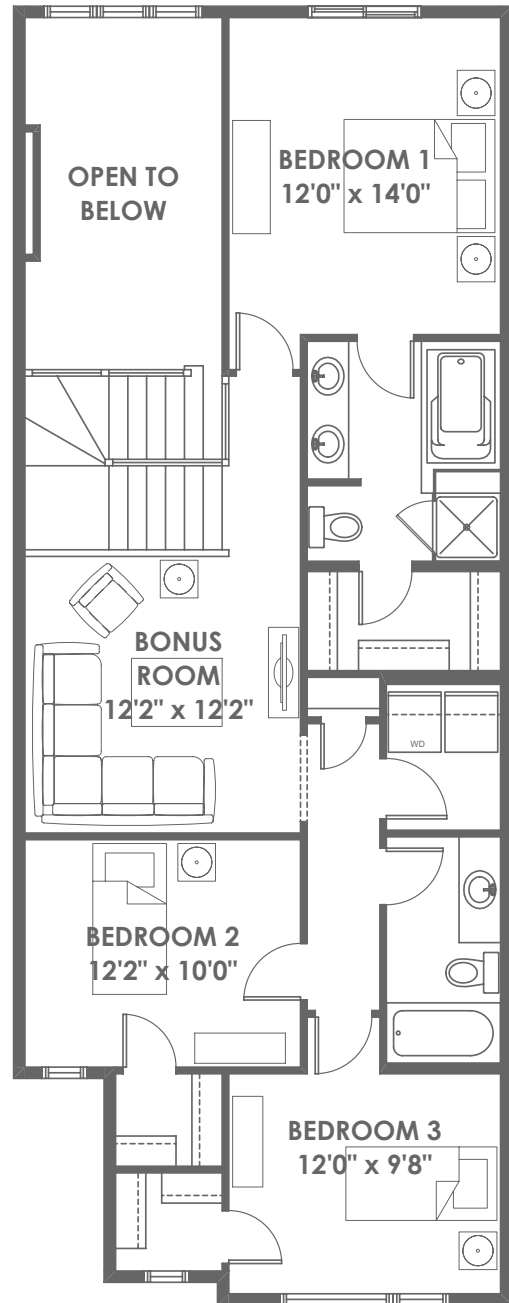
BETTER VALUE BY DESIGN  
SINCE 1978 | HOMESBYAVI.COM

Homes by **AVI**

# FLOOR PLAN



**MAIN**  
856 SQ FT



**UPPER**  
1,078 SQ FT

For more information or to book an appointment please contact us at **587.525.5200**

Prices are subject to change without notice. Actual floor plan, elevation, and square footage may not be exactly as shown. Square footage is measured to Alberta Building Code (ABC) regulations. Builder reserves the right to make changes without notice. E&OE.

Homes by **AVI**