

QUICK  
POSSESSION

# THE HAWTHORNE

2,181 SQ FT | 3 BED | 2.5 BATH

151 ROYAL STREET



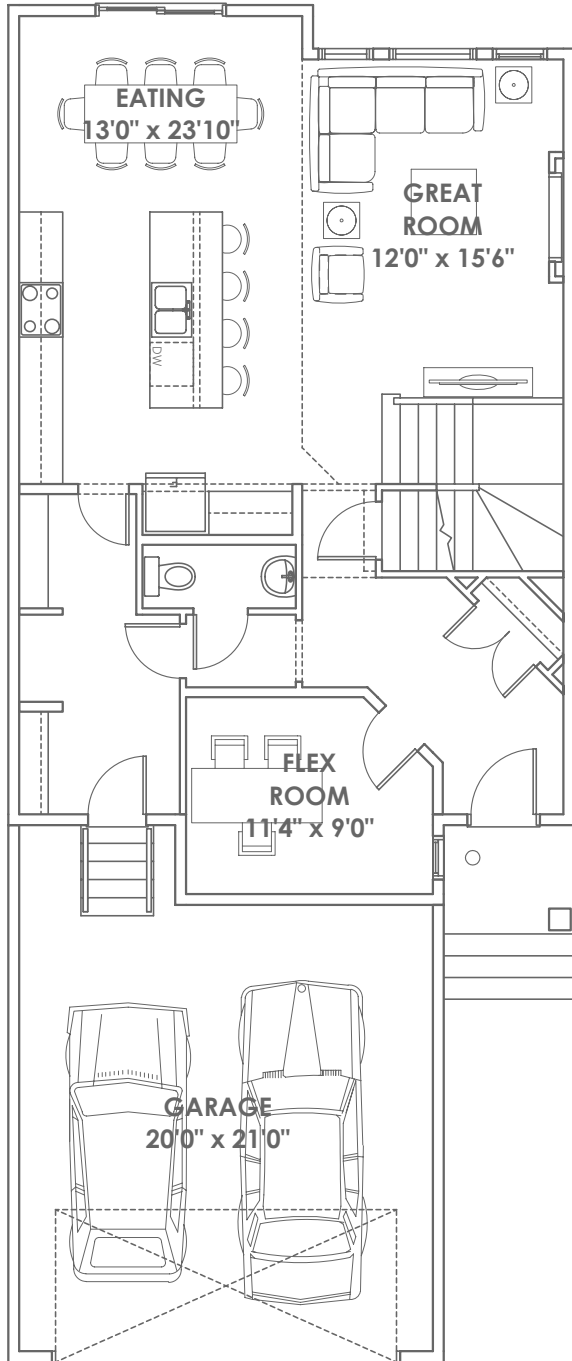
## THIS FRONT DRIVE HOME FEATURES

- Open to below upper floor.
- Upper floor laundry with folding counter.
- 5 piece ensuite.
- Black plumbing and lighting package.
- Built-in bench and hooks in the mudroom.
- Main floor flex room.

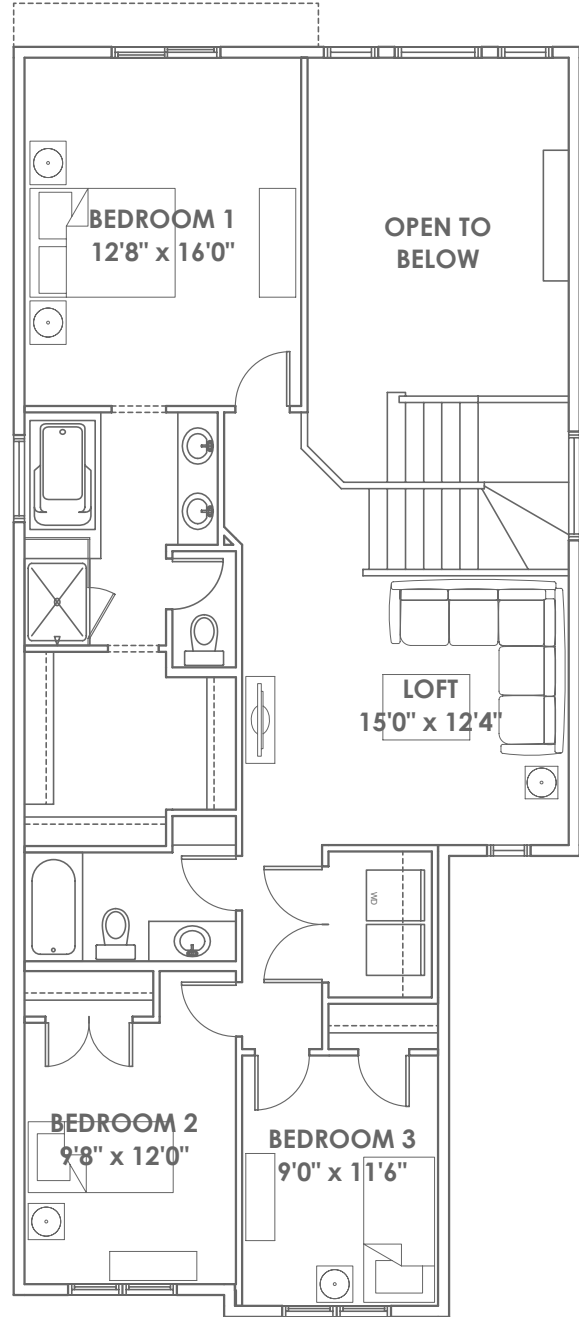
BETTER VALUE BY DESIGN  
SINCE 1978 | HOMESBYAVI.COM

Homes by **AVI**

# FLOOR PLAN



**MAIN**  
1,001 SQ FT



**UPPER**  
1,180 SQ FT

For more information or to book an appointment please contact us at **587.525.5092**

Prices are subject to change without notice. Actual floor plan, elevation, and square footage may not be exactly as shown. Square footage is measured to Alberta Building Code (ABC) regulations. Builder reserves the right to make changes without notice. E&OE.

Homes by **AVI**