

QUICK
POSSESSION

THE YORKSHIRE

2,567 SQ FT | 4 BED | 2.5 BATH

67 CREEKSIDE PATH SW



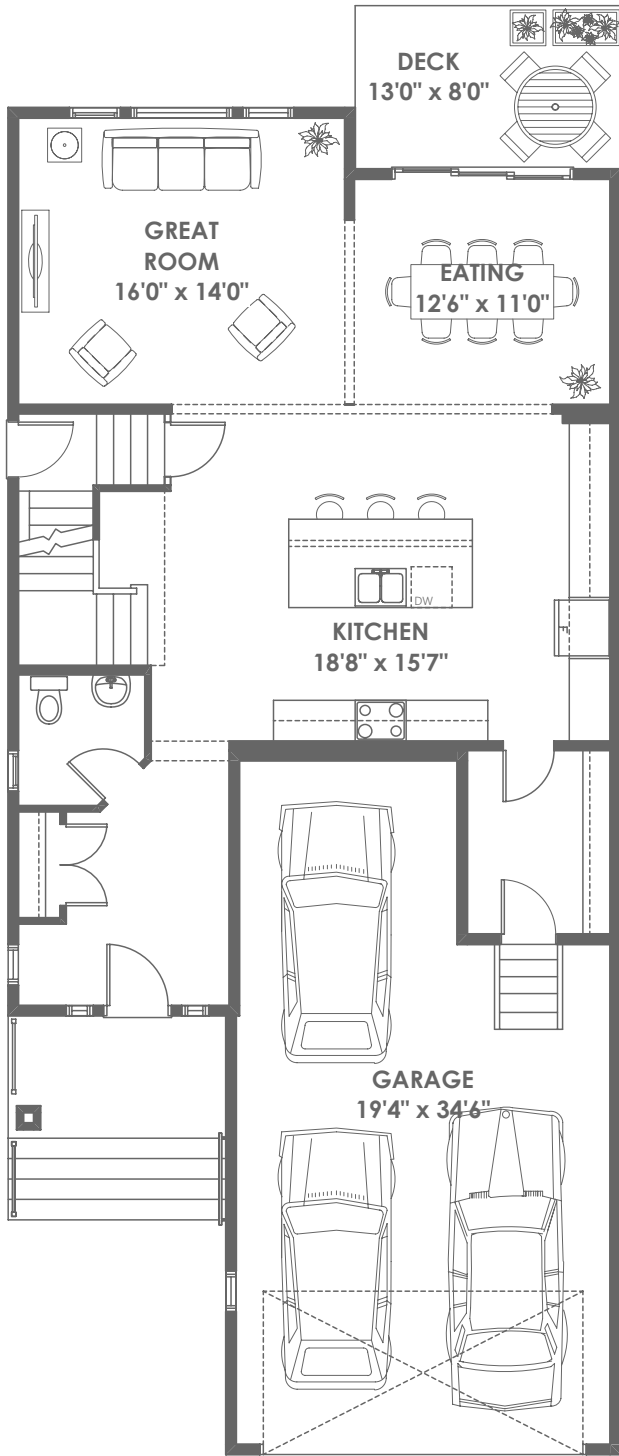
THIS FRONT DRIVE HOME FEATURES

- 30' wide home
- South Backing
- Traditional Lot
- Cabinets to the ceiling
- Quartz throughout
- Gourmet Kitchen
- Prepped for a 2-bedroom Legal suite with 9' foundation, 200 Electrical Panel, Laundry Rough-In, Bathroom-Rough In, Side Entrance, Sink-Rough In.

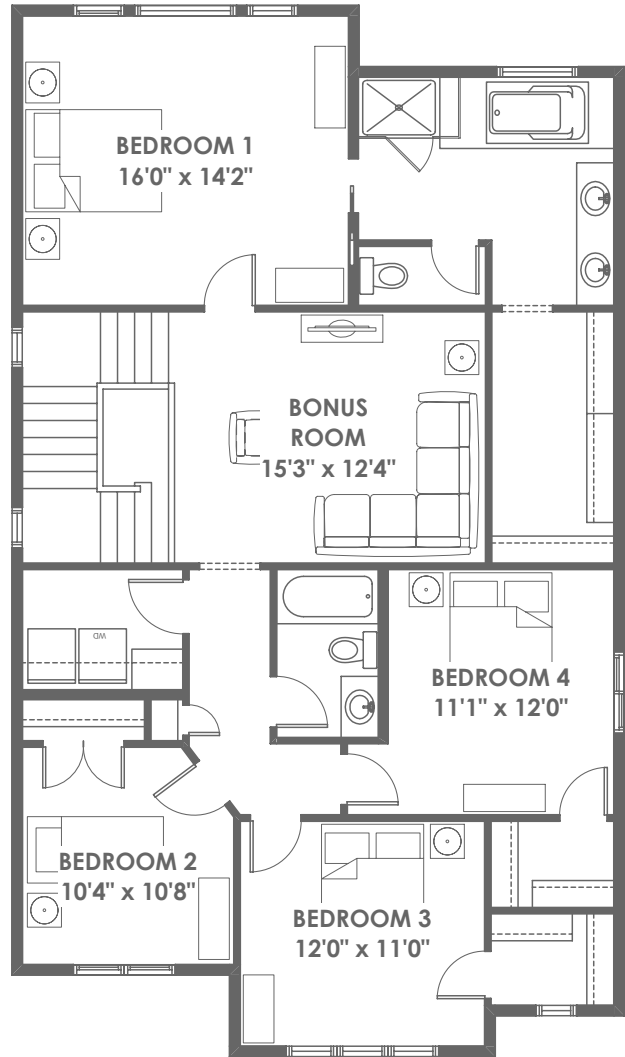
BETTER VALUE BY DESIGN
SINCE 1978 | HOMESBYAVI.COM

Homes by **AVI**

FLOOR PLAN



MAIN
1,135 SQ FT



UPPER
1,432 SQ FT

For more information or to book an appointment please contact us at **403.536.7037**

Prices are subject to change without notice. Actual floor plan, elevation, and square footage may not be exactly as shown. Square footage is measured to Alberta Building Code (ABC) regulations. Builder reserves the right to make changes without notice. E&OE.

Homes by **AVI**