

QUICK
POSSESSION

THE YORKSHIRE

2,567 SQ FT | 4 BED | 2.5 BATH

63 CREEKSIDE PATH SW



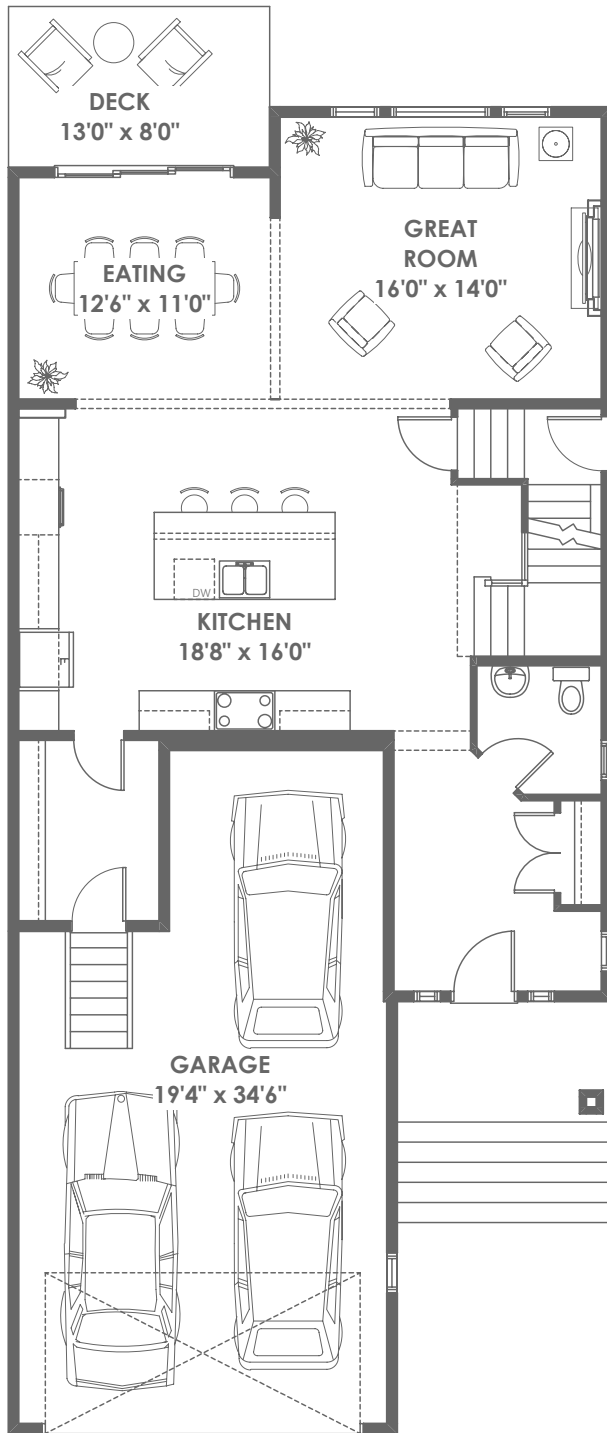
THIS FRONT DRIVE HOME FEATURES

- Quartz throughout
- Gourmet Kitchen Featuring Waterfall Island
- 9' Basement Foundation
- Railing to Stairwell
- Electric Fireplace in Living Room
- Prepped for a 2-bedroom Standard Basement Development and Legal Suite Development.

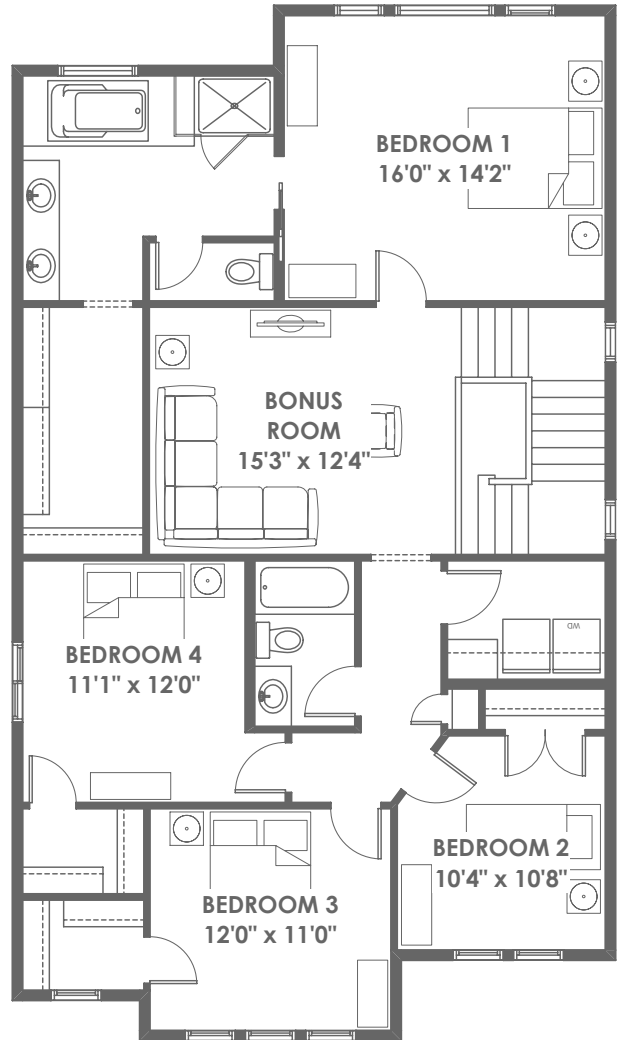
BETTER VALUE BY DESIGN
SINCE 1978 | HOMESBYAVI.COM

Homes by **AVI**

FLOOR PLAN



MAIN
1,135 SQ FT



UPPER
1,432 SQ FT

For more information or to book an appointment please contact us at **403.536.7037**

Prices are subject to change without notice. Actual floor plan, elevation, and square footage may not be exactly as shown. Square footage is measured to Alberta Building Code (ABC) regulations. Builder reserves the right to make changes without notice. E&OE.

Homes by **AVI**