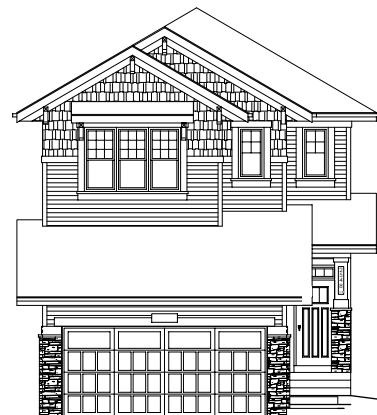


QUICK  
POSSESSION

# THE BRYSON

1,815 SQ FT | 4 BED | 3 BATH

2548 - 211 STREET NW



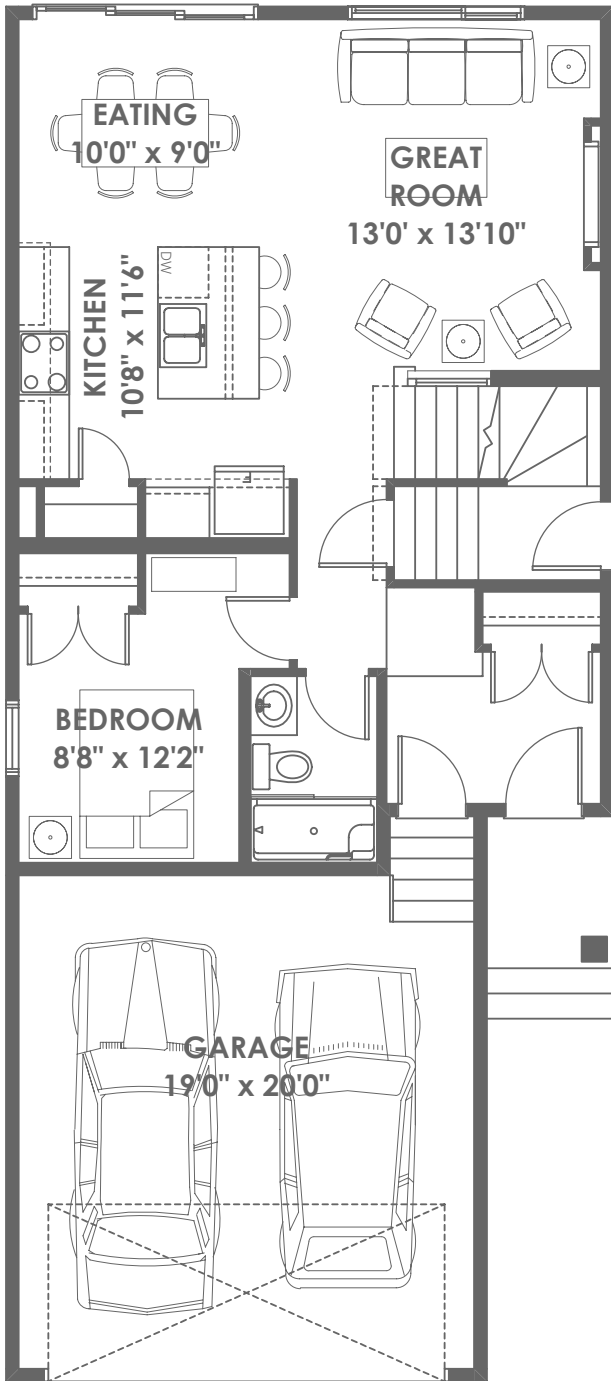
## THIS FRONT DRIVE HOME FEATURES

- 50" built-in electric fireplace in great room.
- Quartz countertops w/silgranit sink in kitchen, quartz with undermount sinks in upper floor bathrooms.
- Railing with iron spindles.
- Luxury vinyl plank flooring throughout main floor.
- 9' ceilings on main and basement and suite possible with side entry/rough-ins.

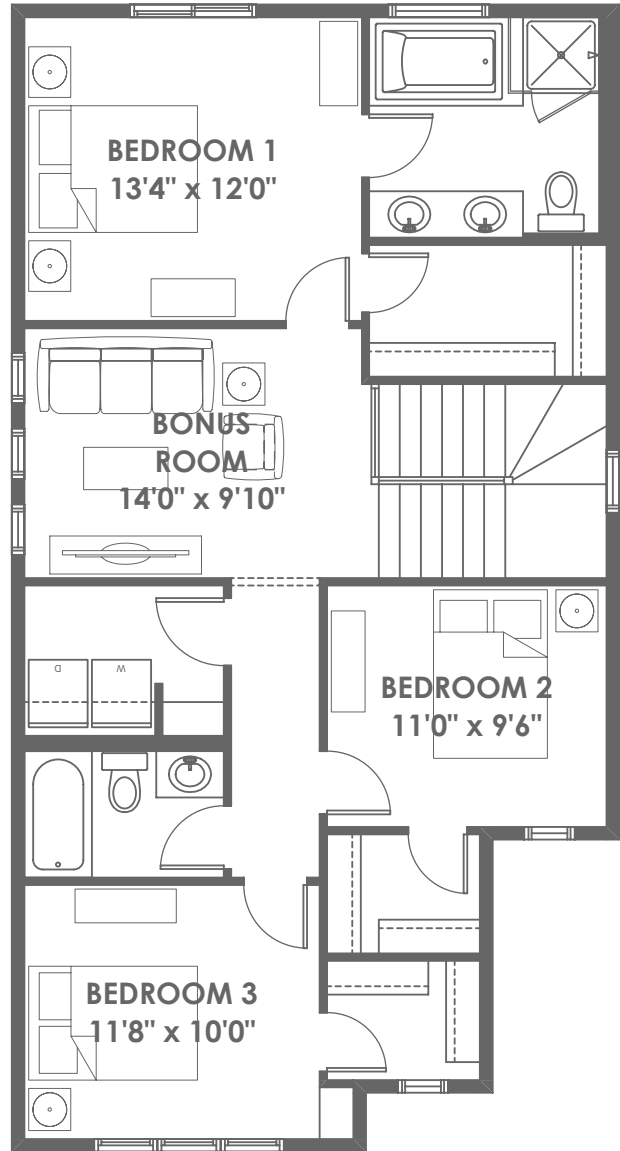
BETTER VALUE BY DESIGN  
SINCE 1978 | HOMESBYAVI.COM

Homes by **AVI**

## FLOOR PLAN



**MAIN**  
803 SQ FT



**UPPER**  
1,012 SQ FT

For more information or to book an appointment please contact us at **587.525.5200**

Prices are subject to change without notice. Actual floor plan, elevation, and square footage may not be exactly as shown. Square footage is measured to Alberta Building Code (ABC) regulations. Builder reserves the right to make changes without notice. E&OE.

Homes by **AVI**