

SHOW
HOME

THE FINLEY

1,449 SQ FT | 3 BED | 2.5 BATH

87 STARLING PARK NW



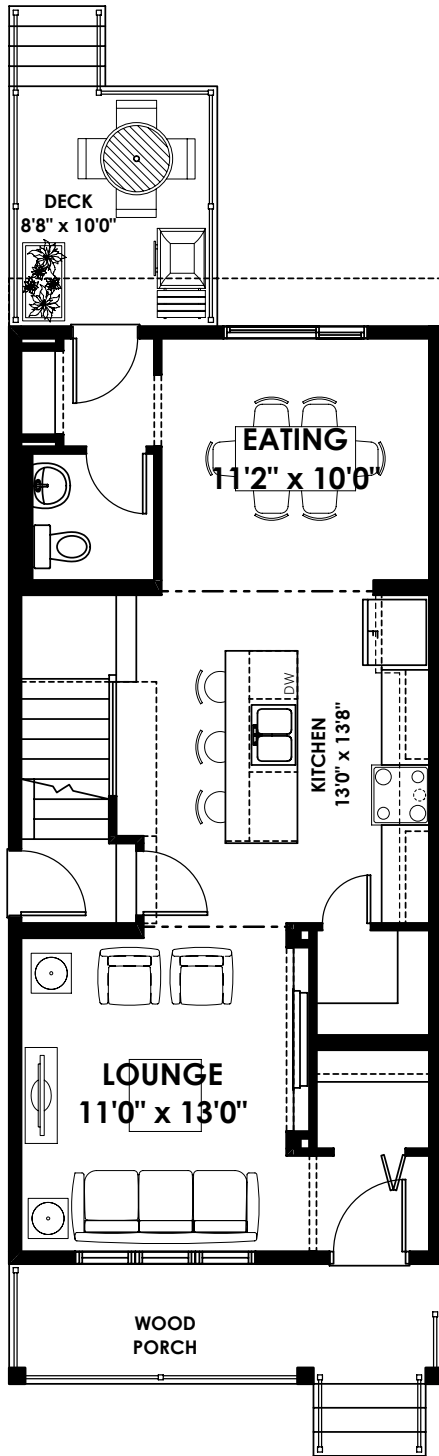
THIS DUPLEX HOME FEATURES

- Side entry for added flexibility
- 9' main floor ceilings for a bright, open feel
- Quartz countertops in the kitchen for a modern touch
- Gas line for BBQ & stove for easy outdoor and indoor cooking
- Full-width front porch & rear deck for added outdoor space
- Energy-efficient features: Fresh Air System, Triple-E low argon windows, High-Efficiency Furnace & more!

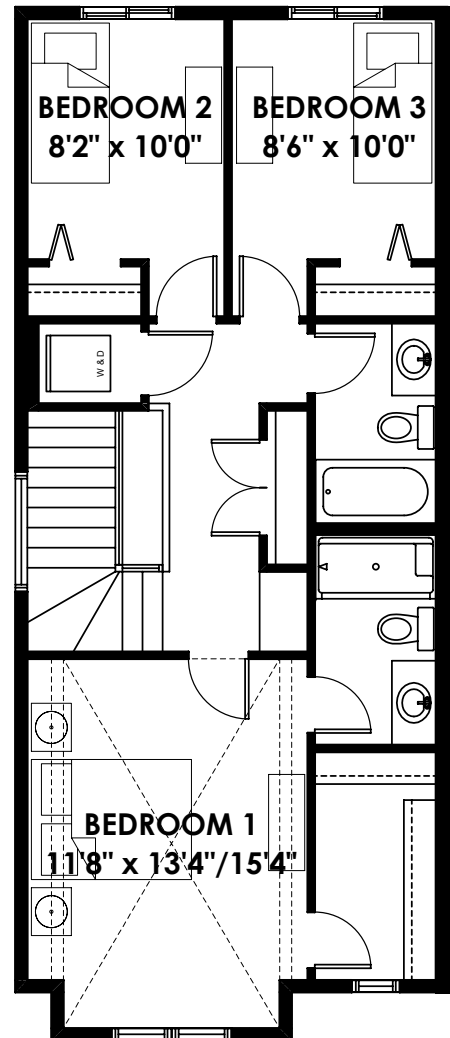
BETTER VALUE BY DESIGN
SINCE 1978 | HOMESBYAVI.COM

Homes by **AVI**

FLOOR PLAN



MAIN
702 SQ FT



UPPER
747 SQ FT

For more information or to book an appointment please contact us at **403.536.7198**

Prices are subject to change without notice. Actual floor plan, elevation, and square footage may not be exactly as shown. Square footage is measured to Alberta Building Code (ABC) regulations. Builder reserves the right to make changes without notice. E&OE.

Homes by **AVI**