

SHOW
HOME

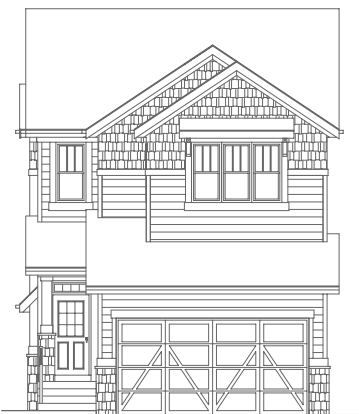
THE GREGORY

1,750 SQ FT | 5 BED | 3.5 BATH

21 LEWISBURG CLOSE NE



THIS LANED HOME FEATURES

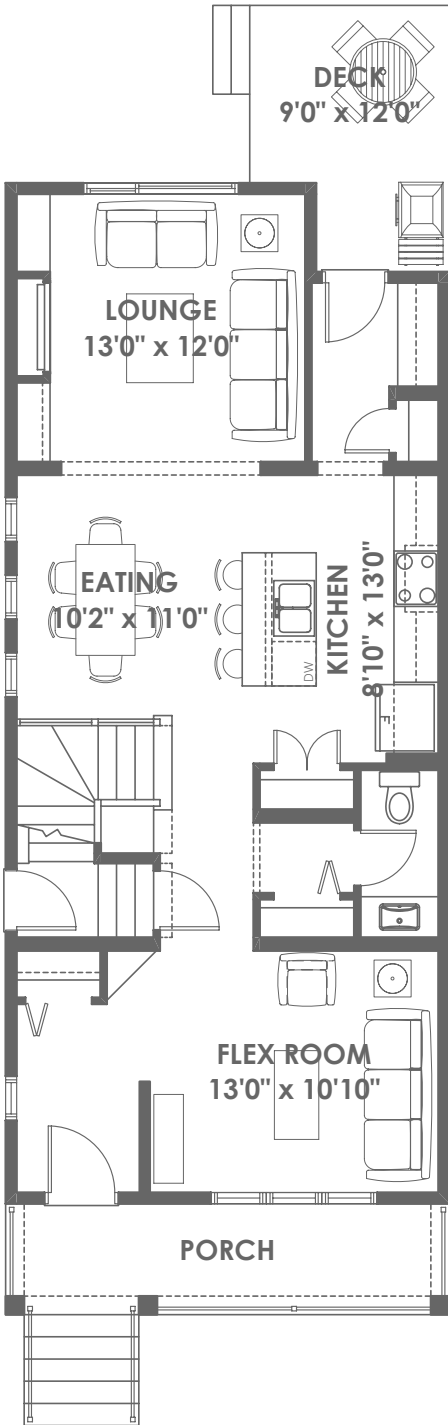


- Legal Basement Suite
- 20x20 Double Car Garage
- 96 sq ft Deck
- Vaulted Ceiling in Master Bedroom
- Additional Windows – stairwell, basement, eating area & foyer for natural light
- Full A/C Unit
- 8' High Doors – on both main and second floors
- Upgraded modern wooden colour Full-Height Cabinets
- Upgraded Stainless Steel Appliances
- Electric Fireplace in the livingroom
- Black Quartz Countertops Throughout
- Countless Premium Upgrades

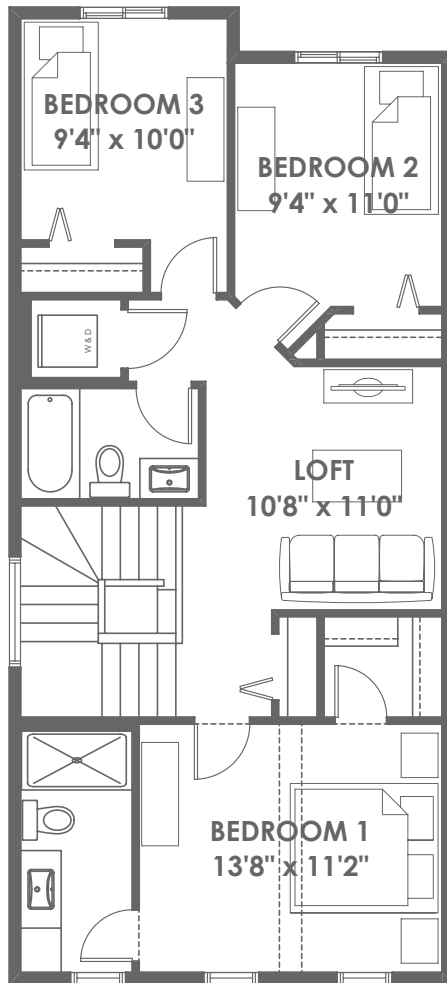
BETTER VALUE BY DESIGN
SINCE 1978 | HOMESBYAVI.COM

Homes by **AVI**

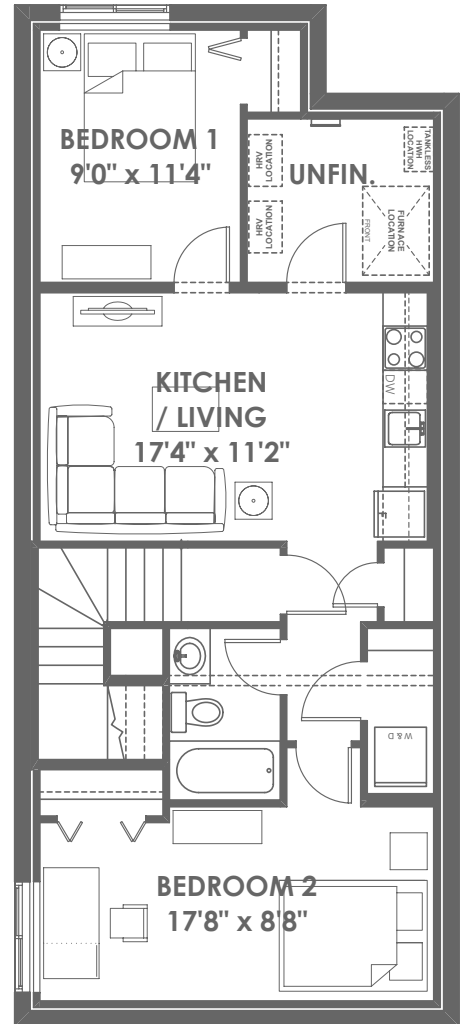
FLOOR PLAN



MAIN
896 SQ FT



UPPER
854 SQ FT



BASEMENT
682 SQ FT
FINISHED AREA

For more information or to book an appointment please contact us at **403.536.7252**

Prices are subject to change without notice. Actual floor plan, elevation, and square footage may not be exactly as shown. Square footage is measured to Alberta Building Code (ABC) regulations. Builder reserves the right to make changes without notice. E&OE.

Homes by **AVI**