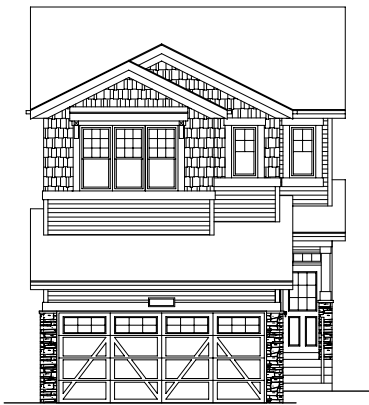


QUICK
POSSESSION

THE WHITMORE

1,678 SQ FT | 3 BED | 2.5 BATH

8019- 228 STREET NW



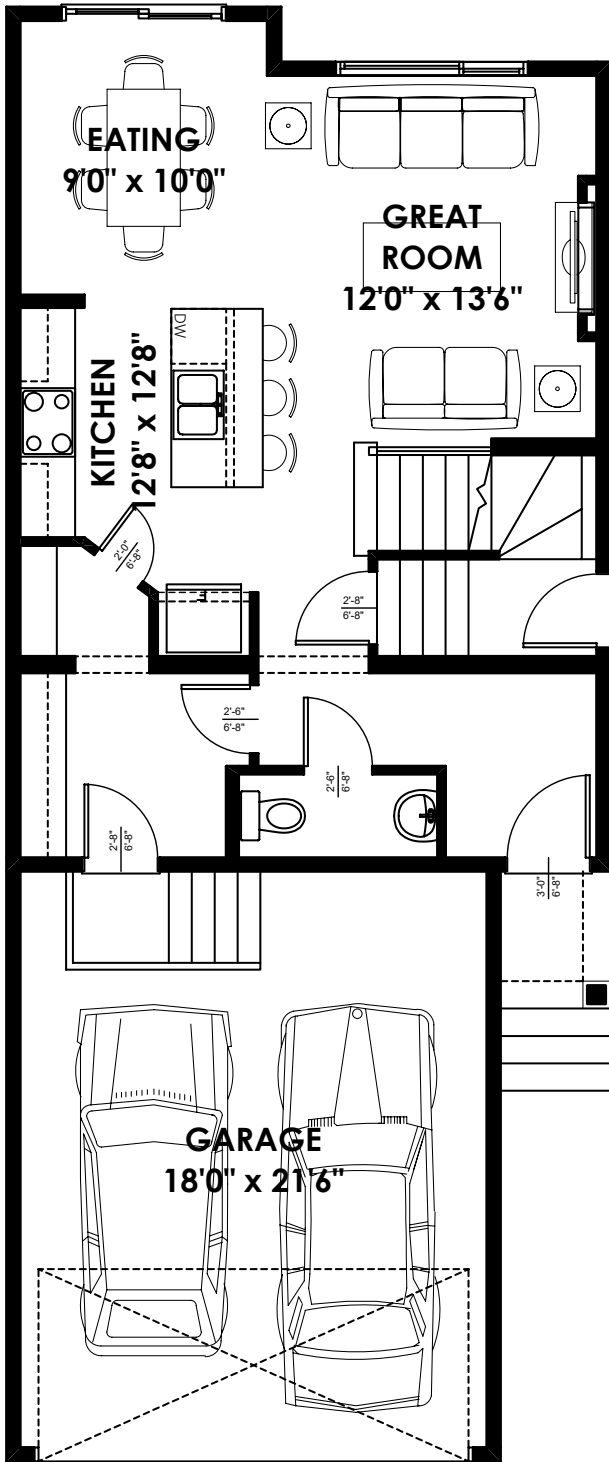
THIS FRONT DRIVE HOME FEATURES

- Pie shaped lot.
- Suite possible w/ side entry, 9' basement walls and stack drains.
- Luxury vinyl plank flooring throughout main floor; luxury vinyl tile in bathrooms and laundry room.
- Quartz countertops w/ silgranit sink in kitchen; quartz w/ undermount sinks in upper floor bathrooms.
- Matte black hardware package.
- Railing w/ iron spindles.
- Electric fireplace w/ mantle in great room.

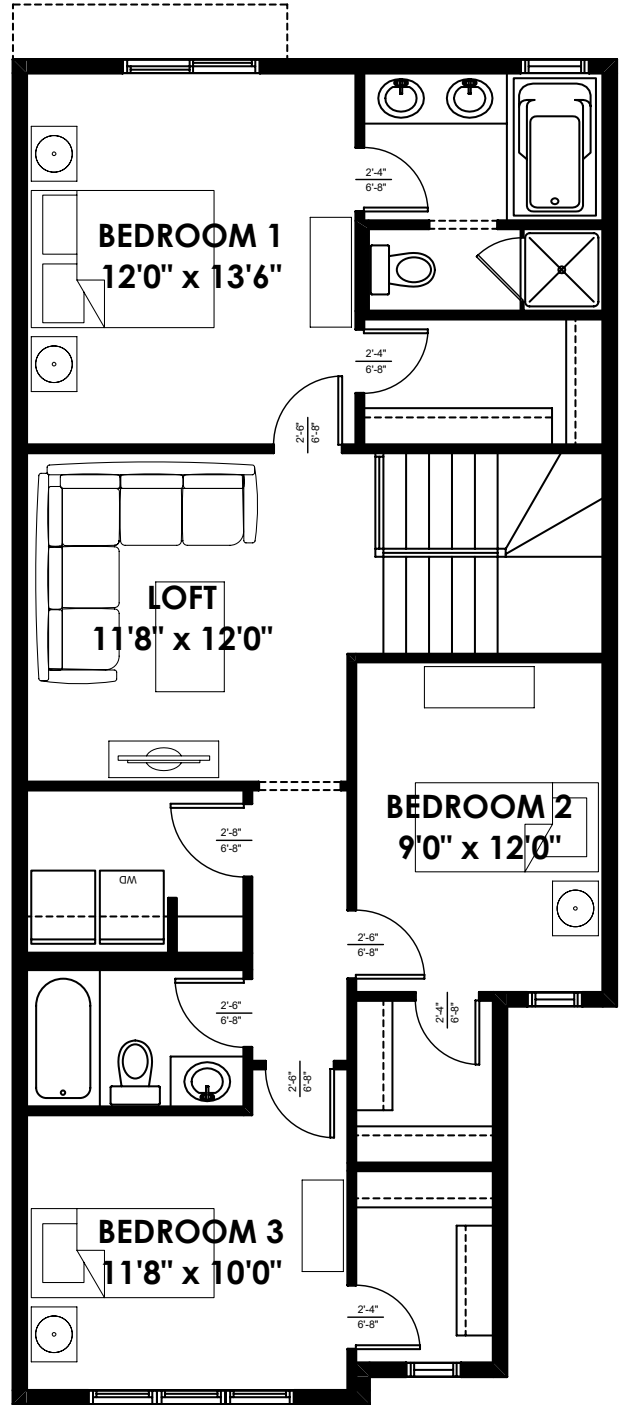
BETTER VALUE BY DESIGN
SINCE 1978 | HOMESBYAVI.COM

Homes by **AVI**

FLOOR PLAN



MAIN
669 SQ FT



UPPER
1,015 SQ FT

For more information or to book an appointment please contact us at **587.525.5099**

Prices are subject to change without notice. Actual floor plan, elevation, and square footage may not be exactly as shown. Square footage is measured to Alberta Building Code (ABC) regulations. Builder reserves the right to make changes without notice. E&OE.

Homes by **AVI**