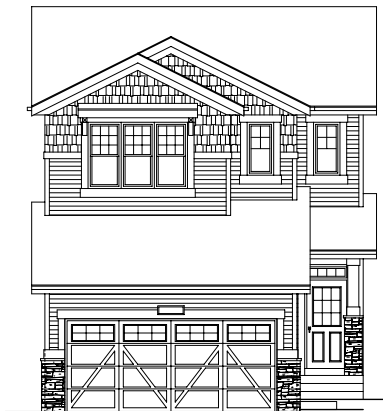


QUICK
POSSESSION

THE BRYSON

1,815 SQ FT | 3 BED | 3 BATH

8124- 230 STREET NW



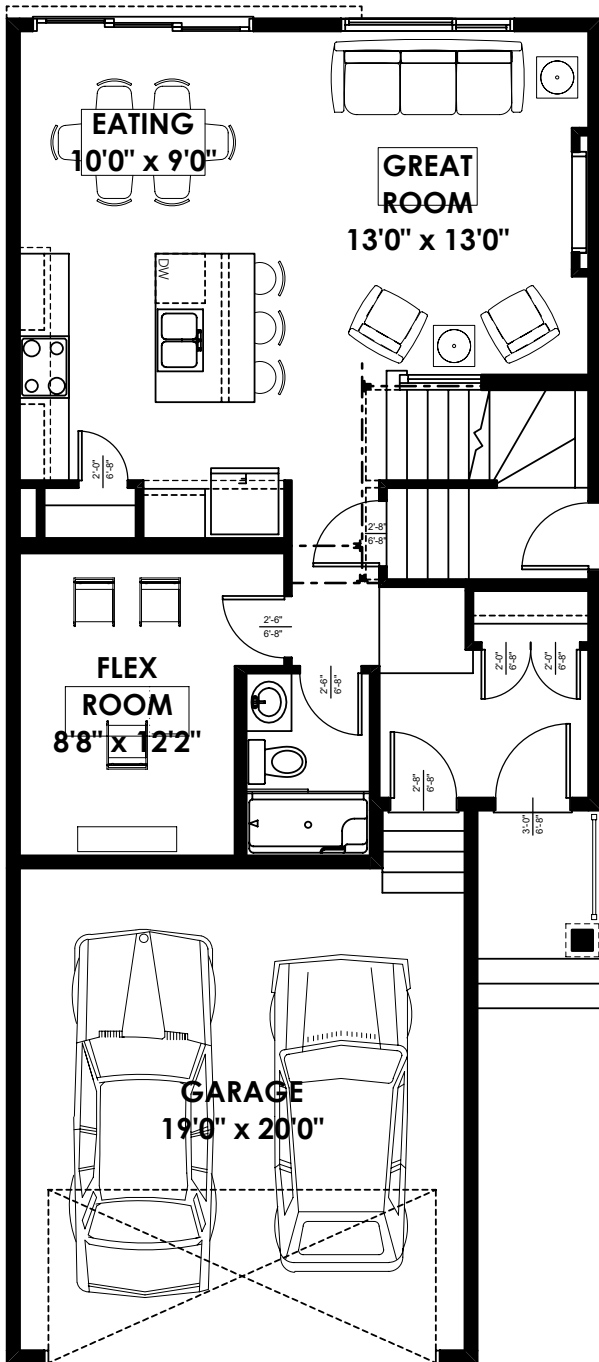
THIS FRONT DRIVE HOME FEATURES

- Flex room and full bathroom on main floor.
- Suite possible w/ side entry, 9' basement walls and stack drains.
- Quartz countertops in kitchen; quartz w/ undermount sinks in upper floor bathrooms.
- Luxury vinyl plank flooring throughout main floor; luxury vinyl tile in bathrooms and laundry room.
- Railing w/ iron spindles.
- Electric fireplace w/ mantle in great room.
- Matte black hardware package.

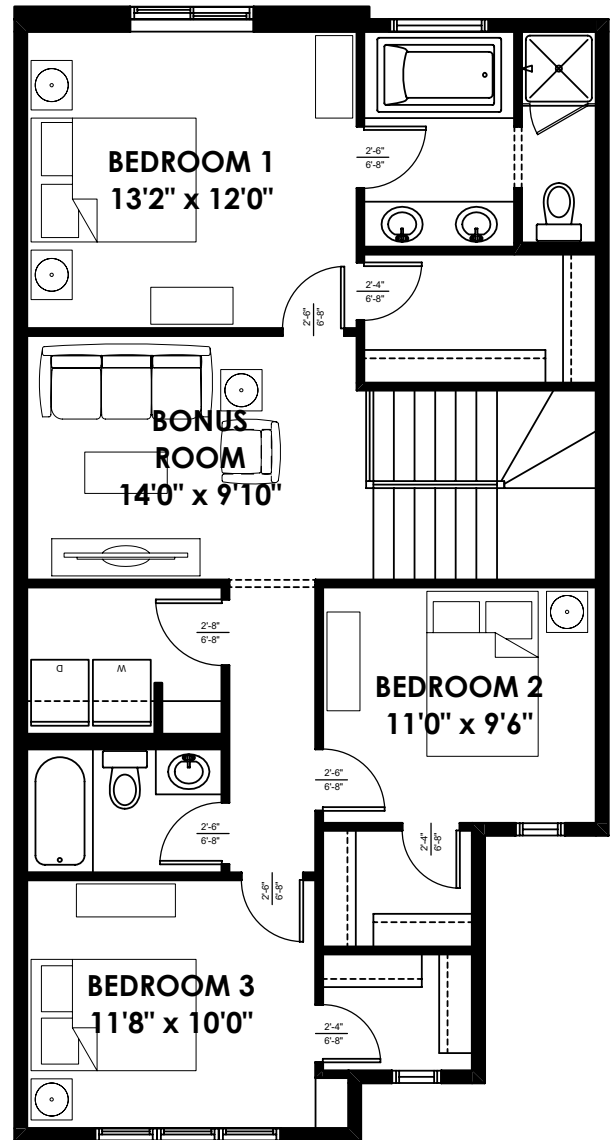
BETTER VALUE BY DESIGN
SINCE 1978 | HOMESBYAVI.COM

Homes by **AVI**

FLOOR PLAN



MAIN
803 SQ FT



UPPER
1,012 SQ FT

For more information or to book an appointment please contact us at **587.525.5099**

Prices are subject to change without notice. Actual floor plan, elevation, and square footage may not be exactly as shown. Square footage is measured to Alberta Building Code (ABC) regulations. Builder reserves the right to make changes without notice. E&OE.

Homes by **AVI**