

QUICK
POSSESSION

THE SASHA

1,532 SQ FT | 3 BED | 2.5 BATH

5102 - 69 STREET, BEAUMONT



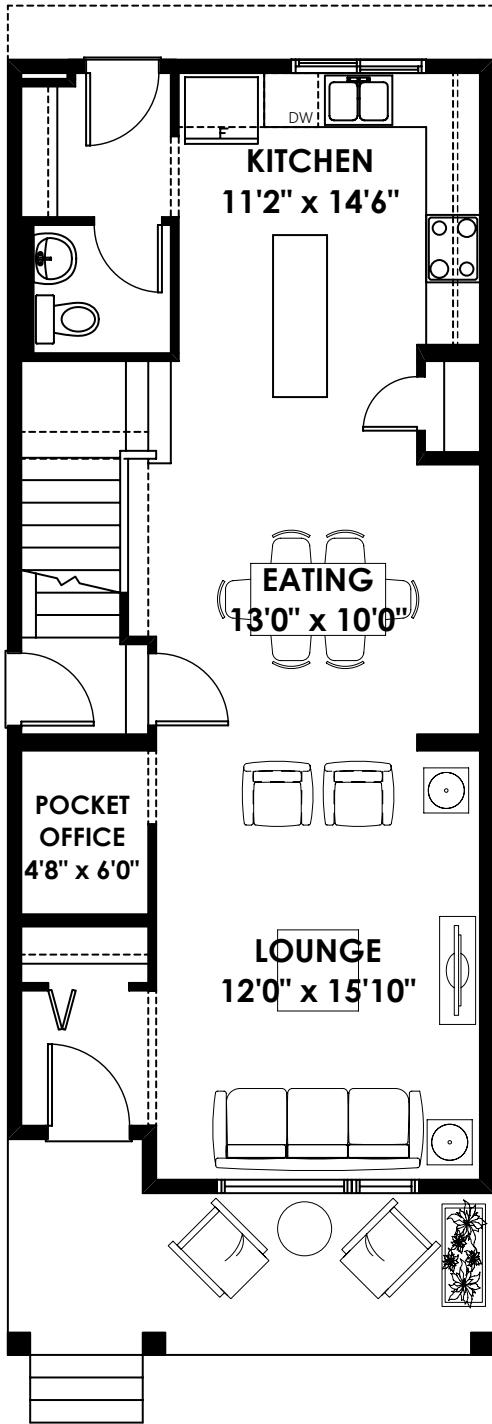
THIS LANED HOME FEATURES

- Side entrance.
- Rear double detached garage.
- Dual sink ensuite vanity.
- Kitchen chimney hood fan & built-in microwave.
- Luxury vinyl plank flooring throughout main floor.
- Quartz countertops throughout.
- 9' main floor and basement ceiling height.

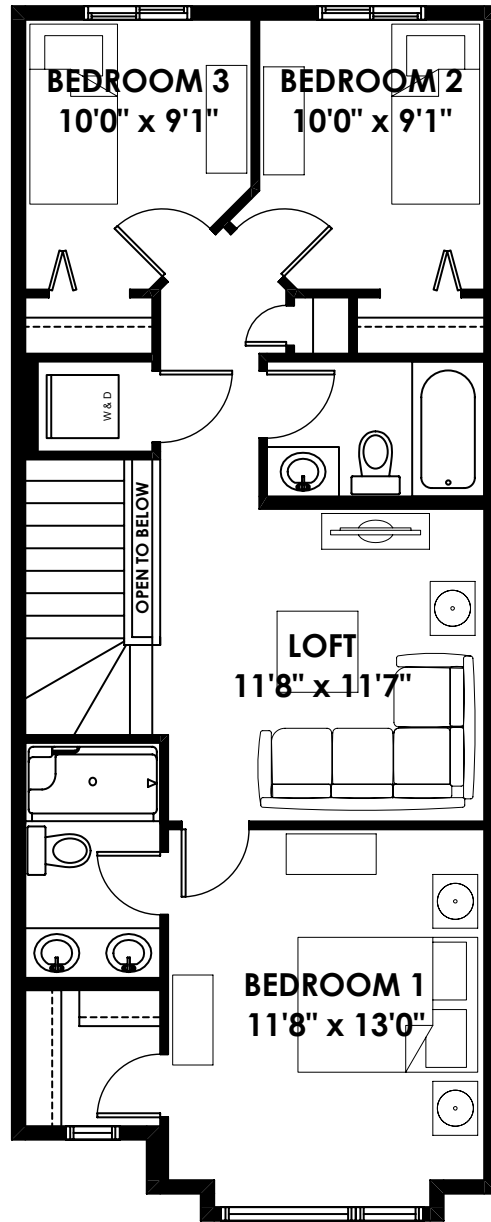
BETTER VALUE BY DESIGN
SINCE 1978 | HOMESBYAVI.COM

Homes by **AVI**

FLOOR PLAN



MAIN
746 SQ FT



UPPER
786 SQ FT

For more information or to book an appointment please contact us at **587.525.5095**

Prices are subject to change without notice. Actual floor plan, elevation, and square footage may not be exactly as shown. Square footage is measured to Alberta Building Code (ABC) regulations. Builder reserves the right to make changes without notice. E&OE.

Homes by **AVI**