

SHOW
HOME

THE LEONARD

1,608 SQ FT | 3 BED + LOFT | 2.5 BATH

12 CREEKSIDE RISE SW



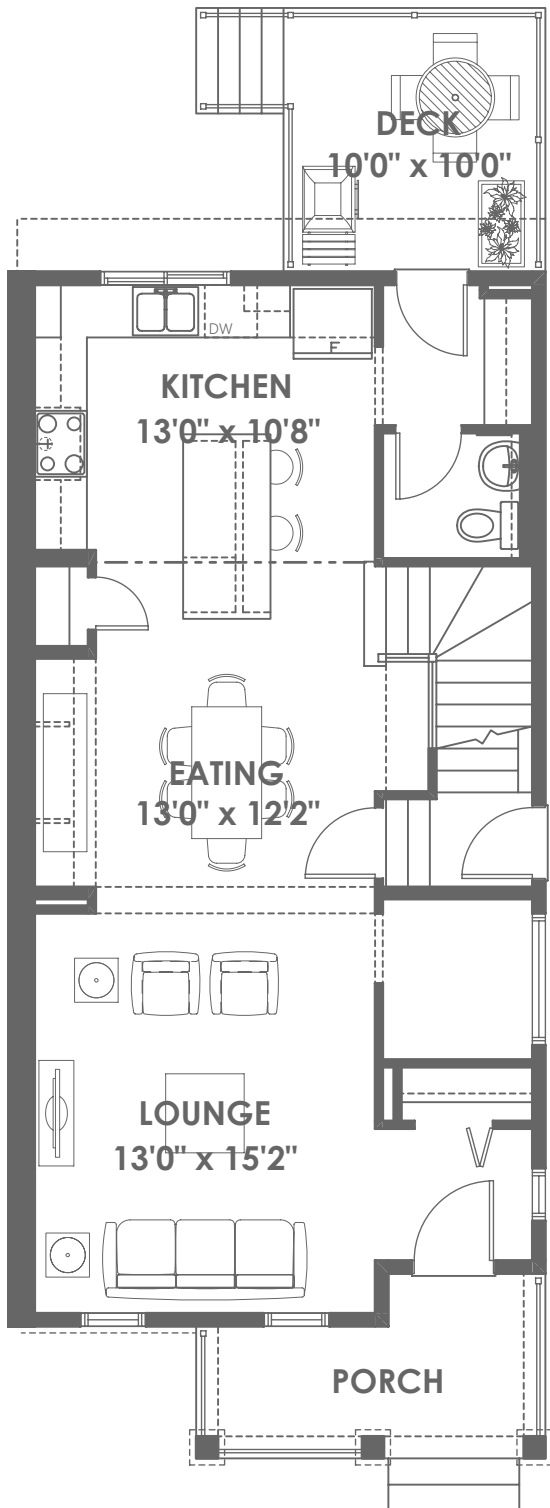
THIS DUPLEX HOME FEATURES

- Bright open-concept main floor with front living room, large dining area, rear kitchen, walk through pantry and a half bathroom
- The light-infused kitchen equipped with delicate cabinetry, quartz countertops, and stainless steel appliances
- Spacious upper floor featuring, bonus room with vaulted ceiling, three bedrooms, two full bathrooms, and a convenient laundry closet plus a convenient laundry closet
- Enjoy outdoor living with a rear deck with BBQ gas line
- Fully developed basement suite completed with 9' foundation walls and a side entry door

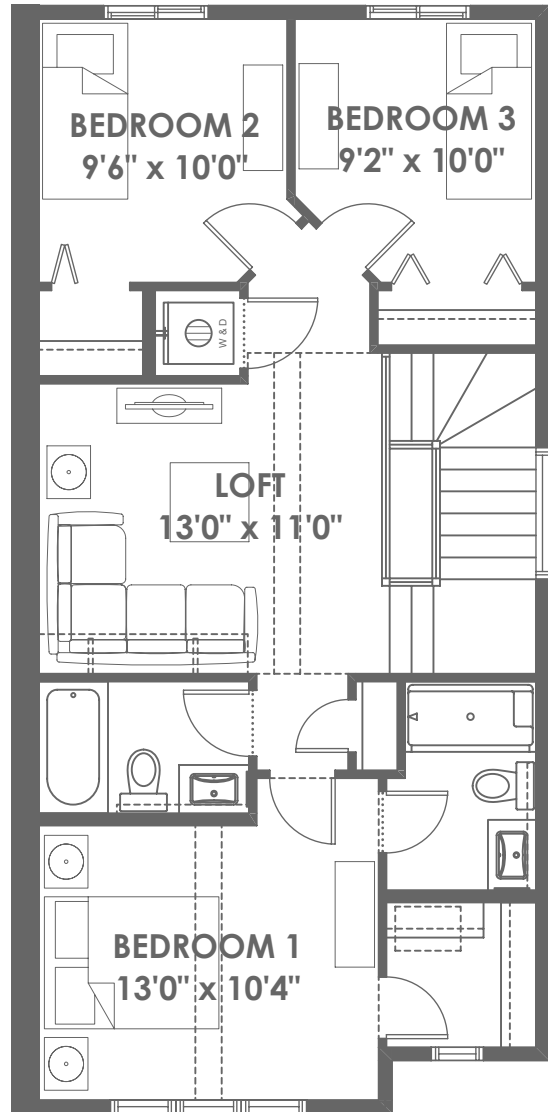
BETTER VALUE BY DESIGN
SINCE 1978 | HOMESBYAVI.COM

Homes by **AVI**

FLOOR PLAN



MAIN
788 SQ FT



UPPER
820 SQ FT

For more information or to book an appointment please contact us at **403.536.7037**

Prices are subject to change without notice. Actual floor plan, elevation, and square footage may not be exactly as shown. Square footage is measured to Alberta Building Code (ABC) regulations. Builder reserves the right to make changes without notice. E&OE.

Homes by **AVI**