

SHOW  
HOME

# THE ALEXIS

1,508 SQ FT | 3 BED | 2.5 BATH

8 CREEKSIDE RISE SW



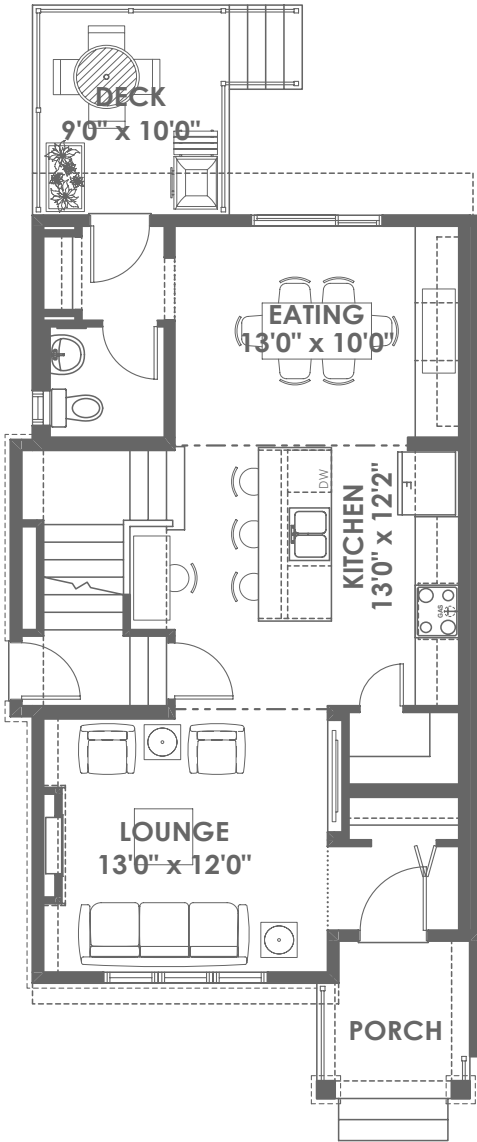
## THIS DUPLEX HOME FEATURES

- Bright open-concept main floor with front living room, rear dining room with open shelving, centre kitchen with walk through pantry, and a half bathroom
- The light-infused kitchen equipped with full height cabinetry, Chimney Hood fan, with Built In Microwave, large island with sink, quartz countertops, and stainless steel appliances
- Spacious upper floor featuring three bedrooms; 2 secondary bedrooms and 1 main bedroom with full ensuite and walk in closet, plus a convenient laundry closet
- Enjoy outdoor living with a rear deck with BBQ gas line
- Prepped for 1 Bedroom Legal Basement Suite (9' Foundation, Side Entrance 200A Panel, 80Gal HWT)

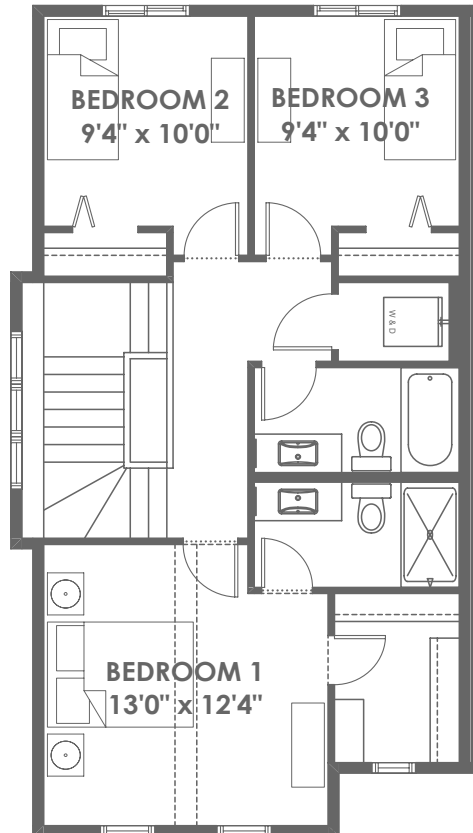
BETTER VALUE BY DESIGN  
SINCE 1978 | HOMESBYAVI.COM

Homes by **AVI**

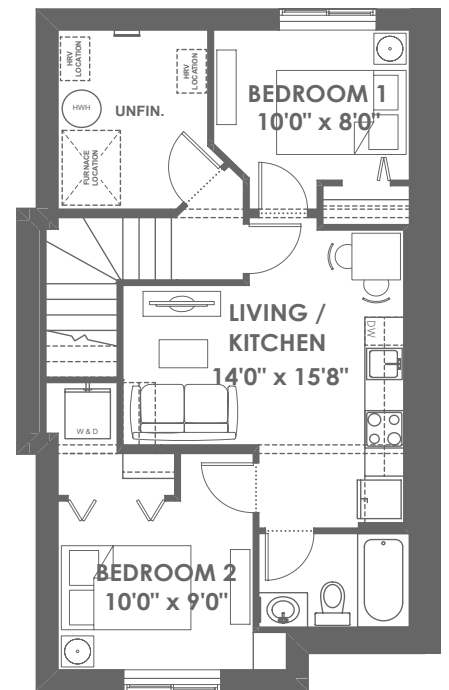
# FLOOR PLAN



**MAIN**  
731 SQ FT



**UPPER**  
777 SQ FT



**BASEMENT**  
535 SQ FT

For more information or to book an appointment please contact us at **403.536.7037**

Prices are subject to change without notice. Actual floor plan, elevation, and square footage may not be exactly as shown. Square footage is measured to Alberta Building Code (ABC) regulations. Builder reserves the right to make changes without notice. E&OE.

Homes by **AVI**