

QUICK  
POSSESSION

# THE JEFFERSON

2,276 SQ FT | 3 BED | 2.5 BATH

187 WALGROVE MANOR SE



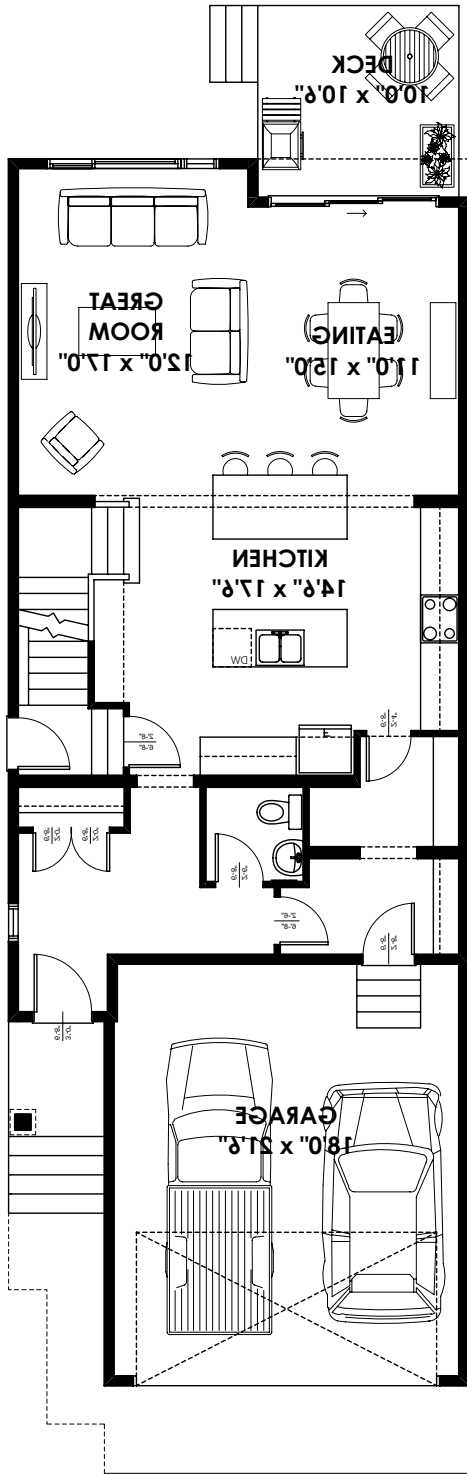
## THIS FRONT DRIVE HOME FEATURES

- Side Entrance
- Rear Walkout Deck
- Double Island Kitchen Plan
- Upgraded Ensuite with 4ft Glass Wall Shower
- Double Ensuite Sinks
- Upper Laundry
- Walk in Closets in All Bedrooms
- 9ft Basement

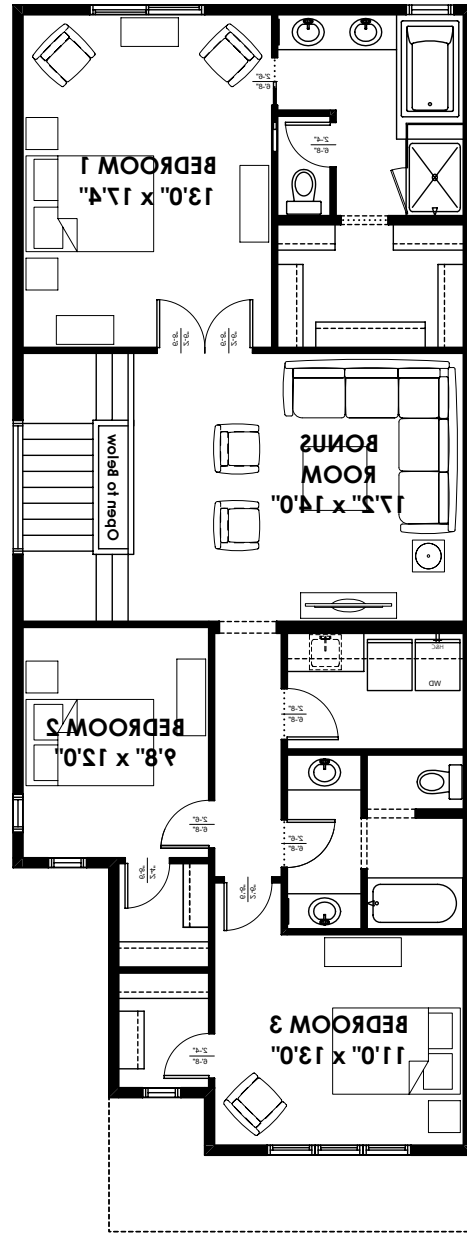
BETTER VALUE BY DESIGN  
SINCE 1978 | HOMESBYAVI.COM

Homes by **AVI**

# FLOOR PLAN



**MAIN**  
1,003 SQ FT



**UPPER**  
1,273 SQ FT

For more information or to book an appointment please contact us at **587.536.7272**

Prices are subject to change without notice. Actual floor plan, elevation, and square footage may not be exactly as shown. Square footage is measured to Alberta Building Code (ABC) regulations. Builder reserves the right to make changes without notice. E&OE.

Homes by **AVI**