

QUICK
POSSESSION

THE HALLADAY

1,934 SQ FT | 3 BED | 2.5 BATH

17419 2 STREET NW



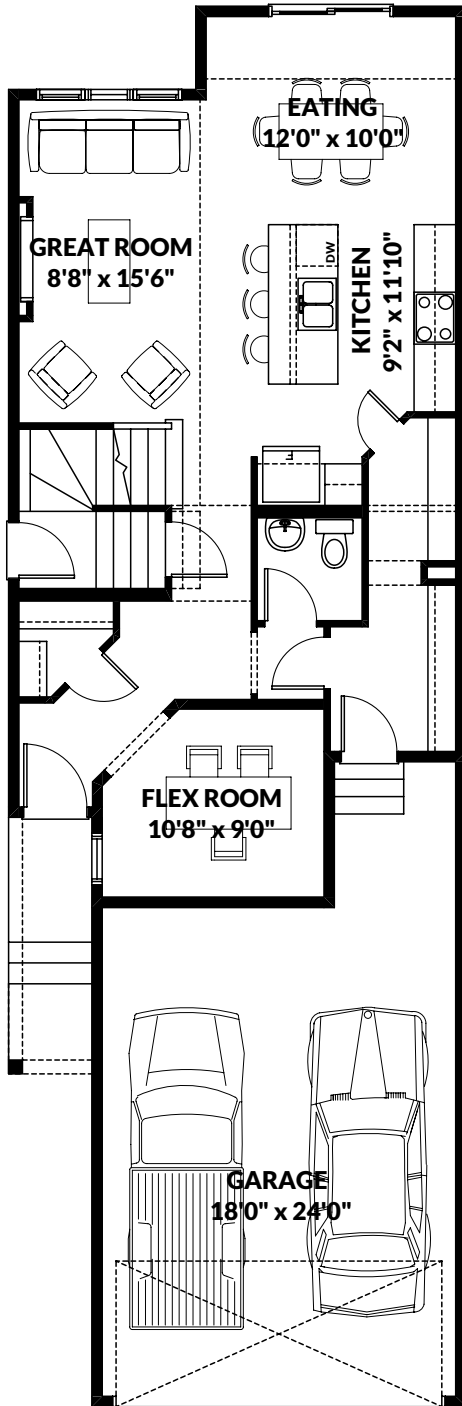
THIS FRONT DRIVE HOME FEATURES

- 39" Upper cabinets in kitchen with chimney hood fan, built in microwave and pot and pan drawers.
- MDF shelving in walk-through pantry.
- Electric fireplace in great room with and mantle.
- Railing with iron spindles.
- Matte black hardware package.
- Double vanities in ensuite.
- Suite possible for future 1 bedroom legal suite.

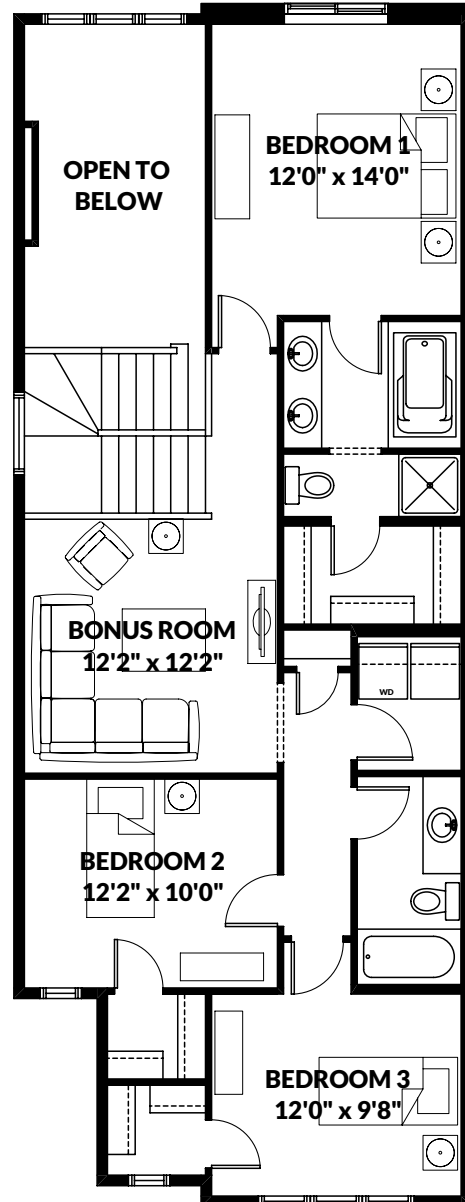
BETTER VALUE BY DESIGN
SINCE 1978 | HOMESBYAVI.COM

Homes by **AVI**

FLOOR PLAN



MAIN
856 SQ FT



UPPER
1,078 SQ FT

For more information or to book an appointment please contact us at **587.525.5079**

Prices are subject to change without notice. Actual floor plan, elevation, and square footage may not be exactly as shown. Square footage is measured to Alberta Building Code (ABC) regulations. Builder reserves the right to make changes without notice. E&OE.

Homes by **AVI**