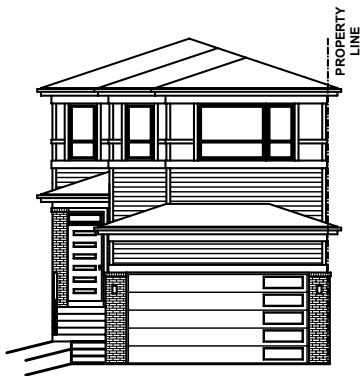


QUICK
POSSESSION

THE JEFFERSON

2,353 SQ FT | 3 BED | 2.5 BATH

243 MALLARD GROVE SE



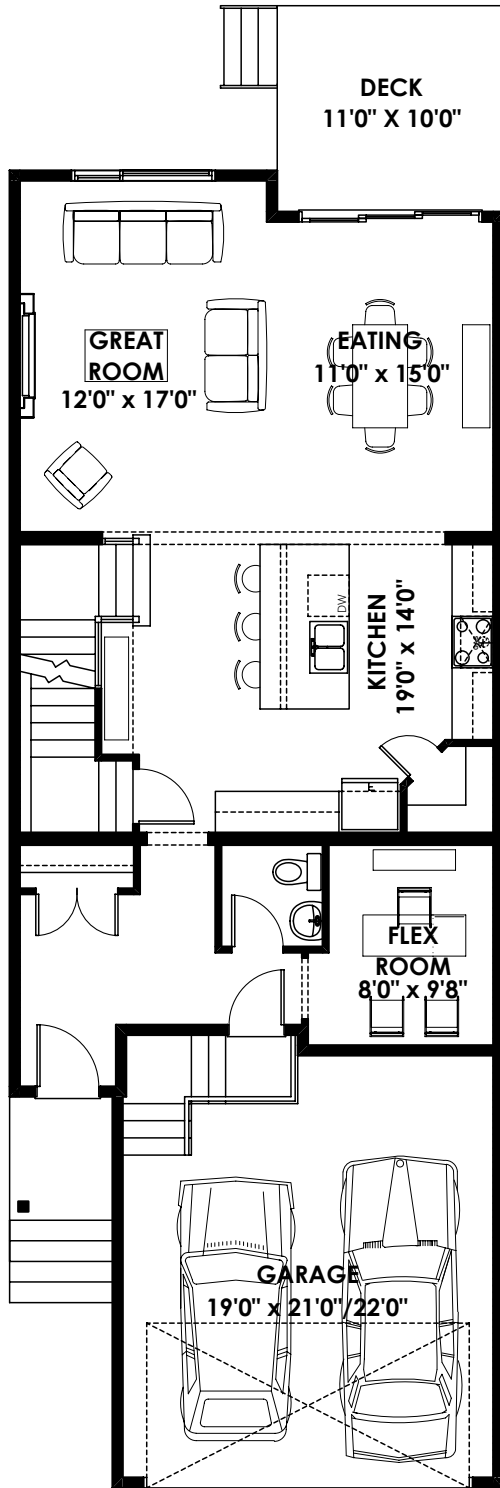
THIS FRONT DRIVE HOME FEATURES

- Primary bedroom includes 5-piece set in ensuite with walk-in closet
- Main floor flex room
- Large great room for entertaining
- Large laundry room on second level
- Window in stairway to bring natural light into
- bonus room
- Backing on to large park with ponds and walking paths
- Quartz counter tops throughout
- Fire place in great room
- Iron and wood railing
- Upgraded lighting package

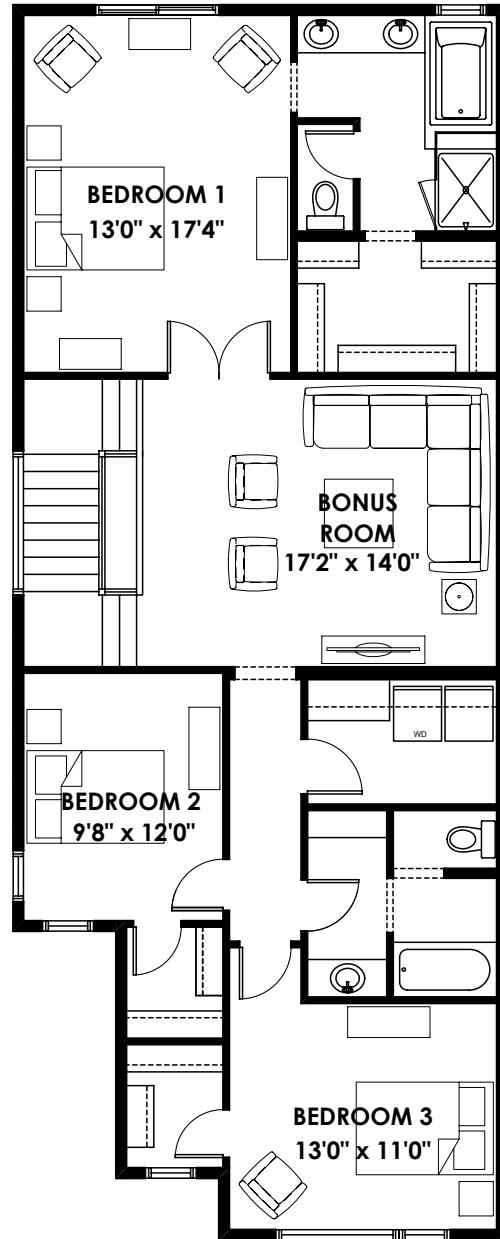
BETTER VALUE BY DESIGN
SINCE 1978 | HOMESBYAVI.COM

Homes by **AVI**

FLOOR PLAN



MAIN
1,013 SQ FT



UPPER
1,340 SQ FT

For more information or to book an appointment please contact us at **403.536.7189**

Prices are subject to change without notice. Actual floor plan, elevation, and square footage may not be exactly as shown. Square footage is measured to Alberta Building Code (ABC) regulations. Builder reserves the right to make changes without notice. E&OE.

Homes by **AVI**