

QUICK
POSSESSION

THE ALEXIS

1,492 SQ FT | 3 BED | 2.5 BATH

72 CREEKSIDE RISE SW



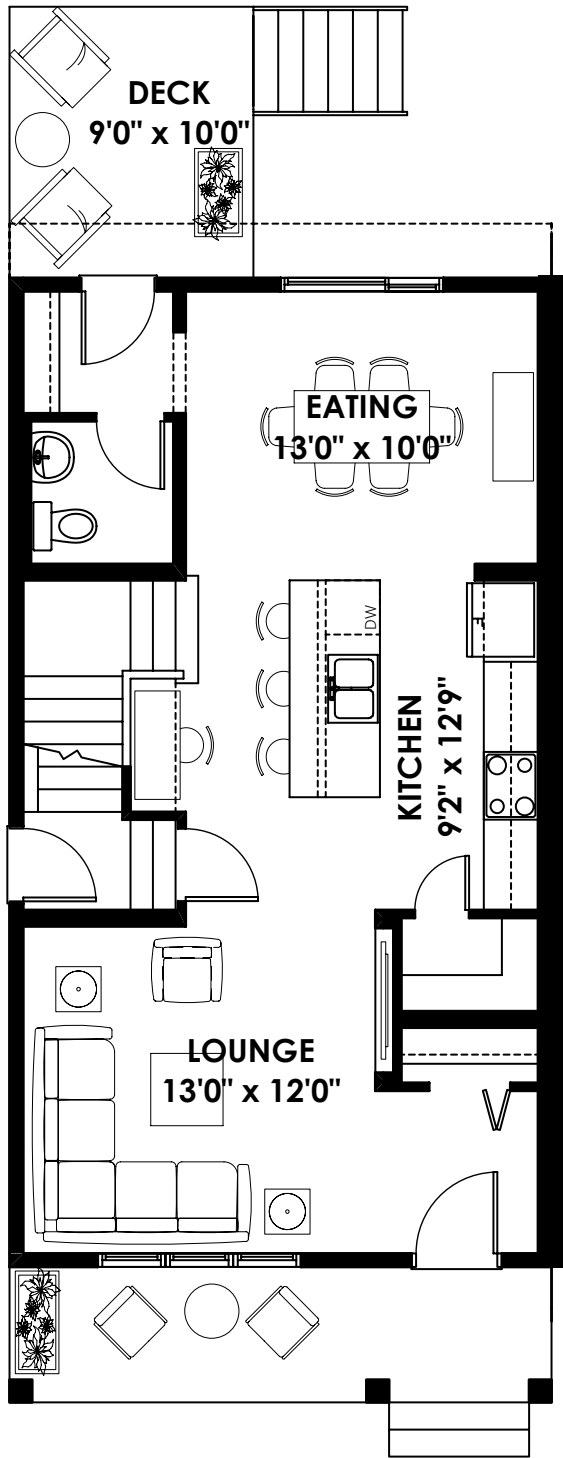
THIS DUPLEX HOME FEATURES

- Full width front porch
- Oversized walk-in closet for front bedroom
- Quartz throughout
- Gas line for BBQ and Stove
- Chimney hood fan, with built in microwave and cabinets to the ceiling
- Prepped for a 1-bedroom legal suite (9' foundation, side entrance, 200 amp panel, 80 GAL hot water tank)

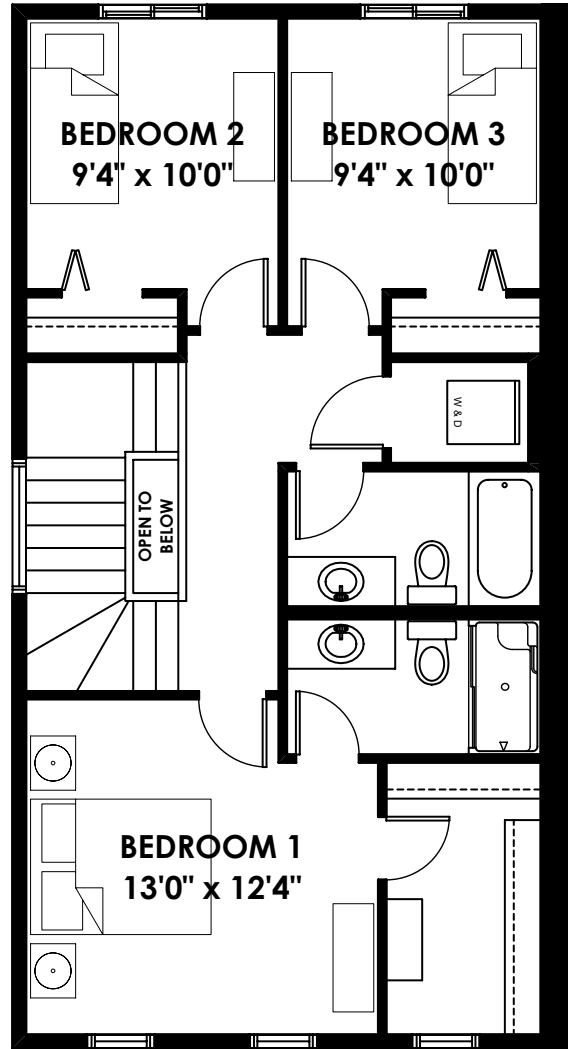
BETTER VALUE BY DESIGN
SINCE 1978 | HOMESBYAVI.COM

Homes by **AVI**

FLOOR PLAN



MAIN
730 SQ FT



UPPER
762 SQ FT

For more information or to book an appointment please contact us at **403.536.7037**

Prices are subject to change without notice. Actual floor plan, elevation, and square footage may not be exactly as shown. Square footage is measured to Alberta Building Code (ABC) regulations. Builder reserves the right to make changes without notice. E&OE.

Homes by **AVI**