

QUICK
POSSESSION

THE ALEXIS

1,492 SQ FT | 3 BED | 2.5 BATH

32 CREEKSIDE RISE SW



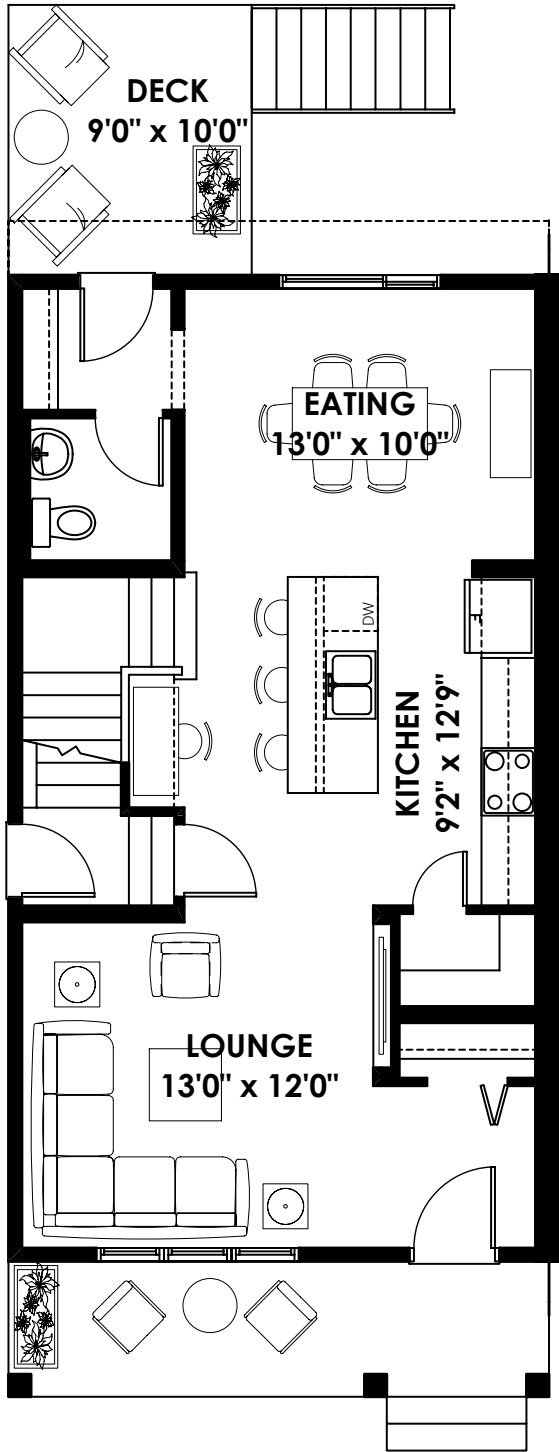
THIS DUPLEX HOME FEATURES

- Chimney Hood Fan, with Built In Microwave and Cabinets to the Ceiling
- Gas Line for BBQ and Stove
- Full Width Porch and Deck
- Prepped for 1-Bedroom Legal Suite (9' Foundation, Side Entrance, 200A Panel, 80 Gal HWT)

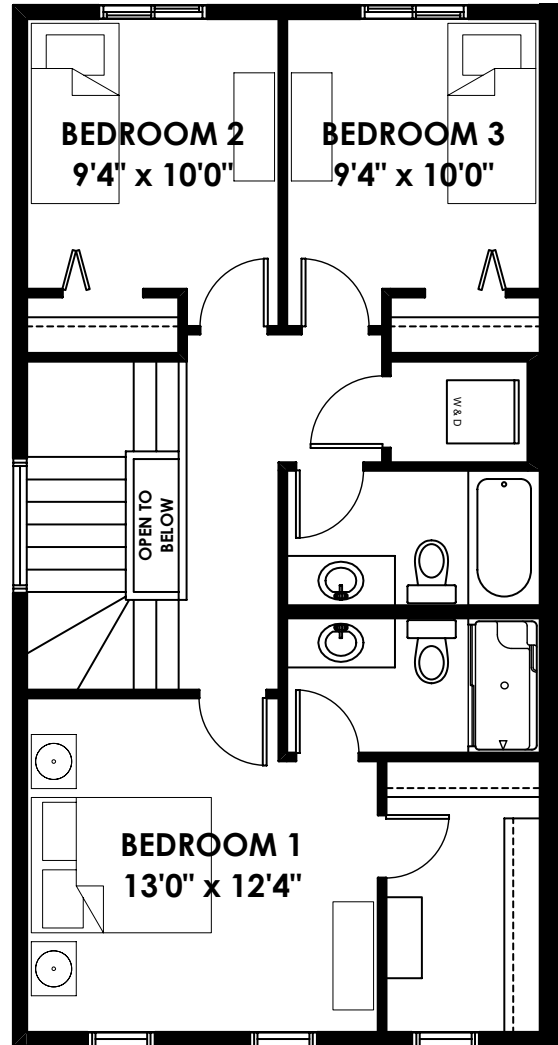
BETTER VALUE BY DESIGN
SINCE 1978 | HOMESBYAVI.COM

Homes by **AVI**

FLOOR PLAN



MAIN
730 SQ FT



UPPER
762 SQ FT

For more information or to book an appointment please contact us at **403.536.7037**

Prices are subject to change without notice. Actual floor plan, elevation, and square footage may not be exactly as shown. Square footage is measured to Alberta Building Code (ABC) regulations. Builder reserves the right to make changes without notice. E&OE.

Homes by **AVI**