

QUICK
POSSESSION

THE JEFFERSON

2,353 SQ FT | 3 BED | 2.5 BATH

49 ROYSTON GROVE NW



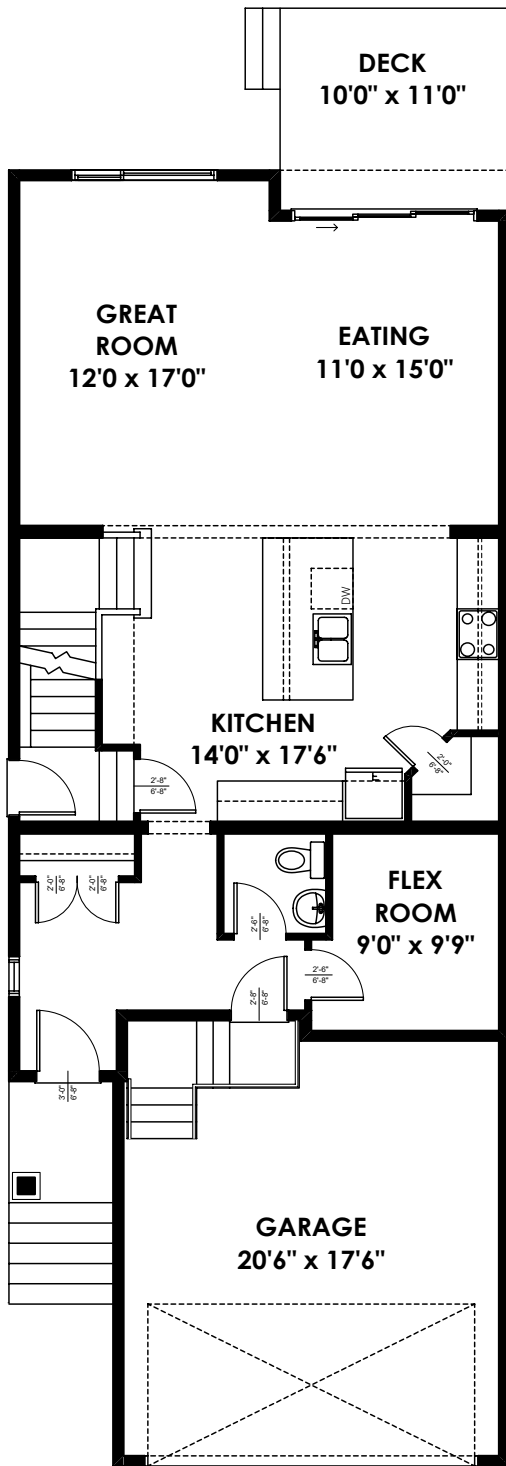
THIS FRONT DRIVE HOME FEATURES

- Main floor flex room
- Spacious kitchen, awesome for entertaining
- 3 Section patio door to rear deck
- Gas cooktop, wall oven & microwave
- Side entry door
- Upgraded ensuite

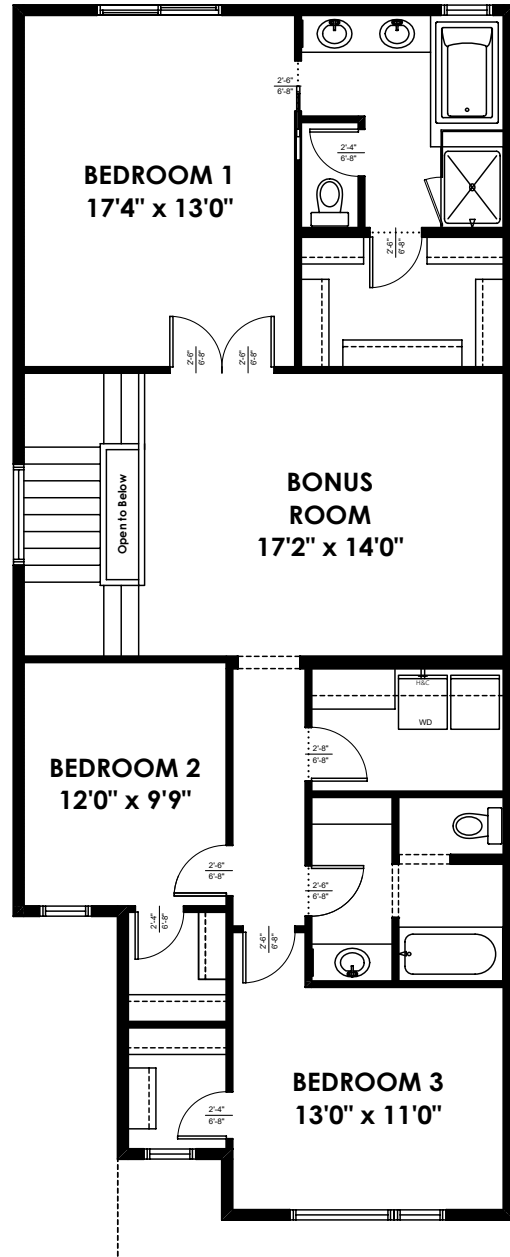
BETTER VALUE BY DESIGN
SINCE 1978 | HOMESBYAVI.COM

Homes by **AVI**

FLOOR PLAN



MAIN
1013 SQ FT



UPPER
1340 SQ FT

For more information or to book an appointment please contact us at **403.536.7215**

Prices are subject to change without notice. Actual floor plan, elevation, and square footage may not be exactly as shown. Square footage is measured to Alberta Building Code (ABC) regulations. Builder reserves the right to make changes without notice. E&OE.

Homes by **AVI**