

QUICK
POSSESSION

THE HEMSWORTH

2,067 SQ FT | 3 BED | 2.5 BATH

41 ROYSTON GROVE NW



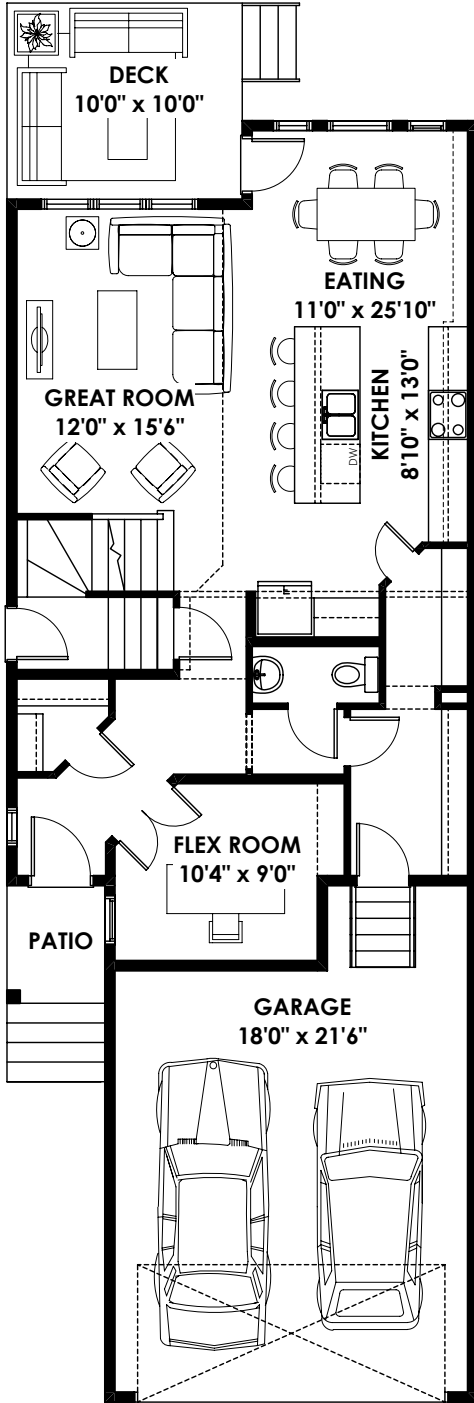
THIS FRONT DRIVE HOME FEATURES

- Extended Kitchen/Nook
- Large windows to Great Room
- Open to above in great room
- Loft on second floor overlooking great room
- Deck

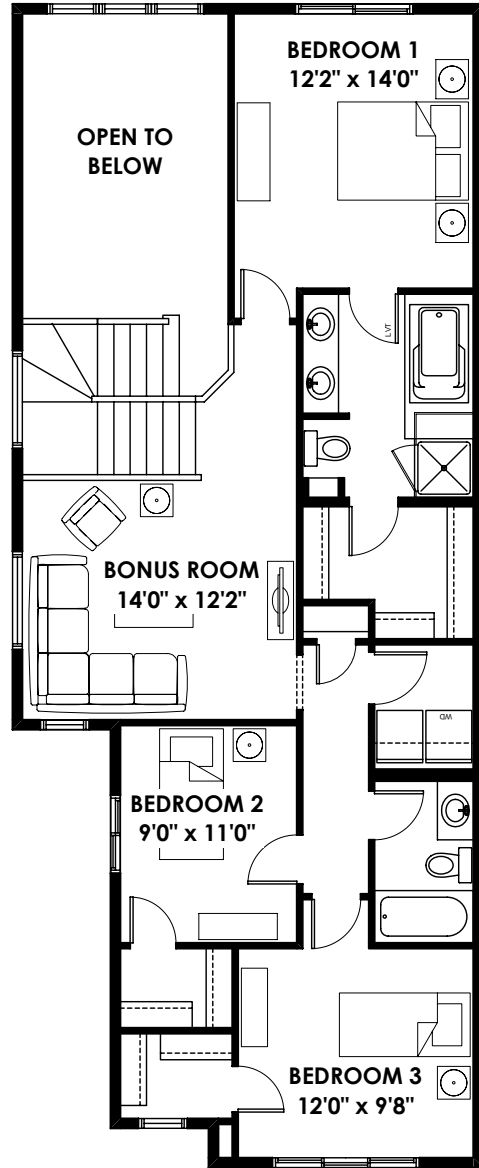
BETTER VALUE BY DESIGN
SINCE 1978 | HOMESBYAVI.COM

Homes by **AVI**

FLOOR PLAN



MAIN
937 SQ FT



UPPER
1130 SQ FT

For more information or to book an appointment please contact us at **403.536.7215**

Prices are subject to change without notice. Actual floor plan, elevation, and square footage may not be exactly as shown. Square footage is measured to Alberta Building Code (ABC) regulations. Builder reserves the right to make changes without notice. E&OE.

Homes by **AVI**