

QUICK
POSSESSION

THE GREGORY

1,740 SQ FT | 4 BED | 3 BATH

719 SAVANNA CRES



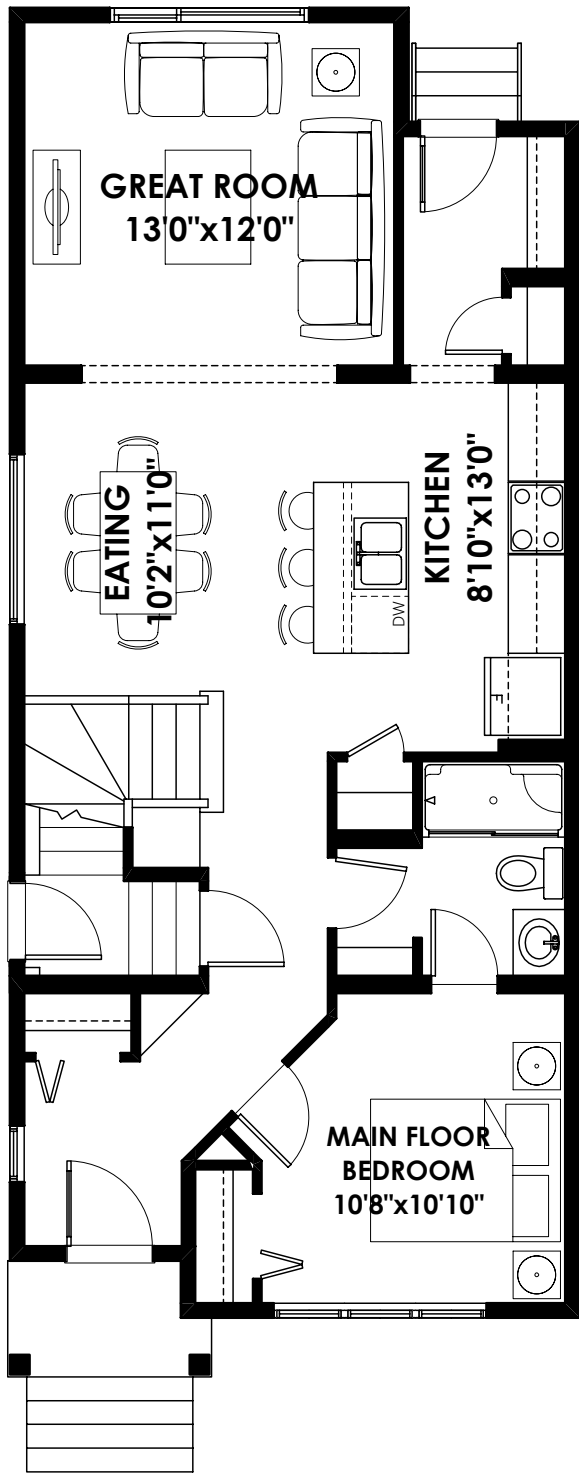
THIS LANED HOME FEATURES

- 4 Bedroom Home (One main floor bedroom)
- 3 Full Bathrooms
- 9's basement foundation w/rough-in bar sink and 2nd laundry hookup
- Walking distance to Pond and pathways

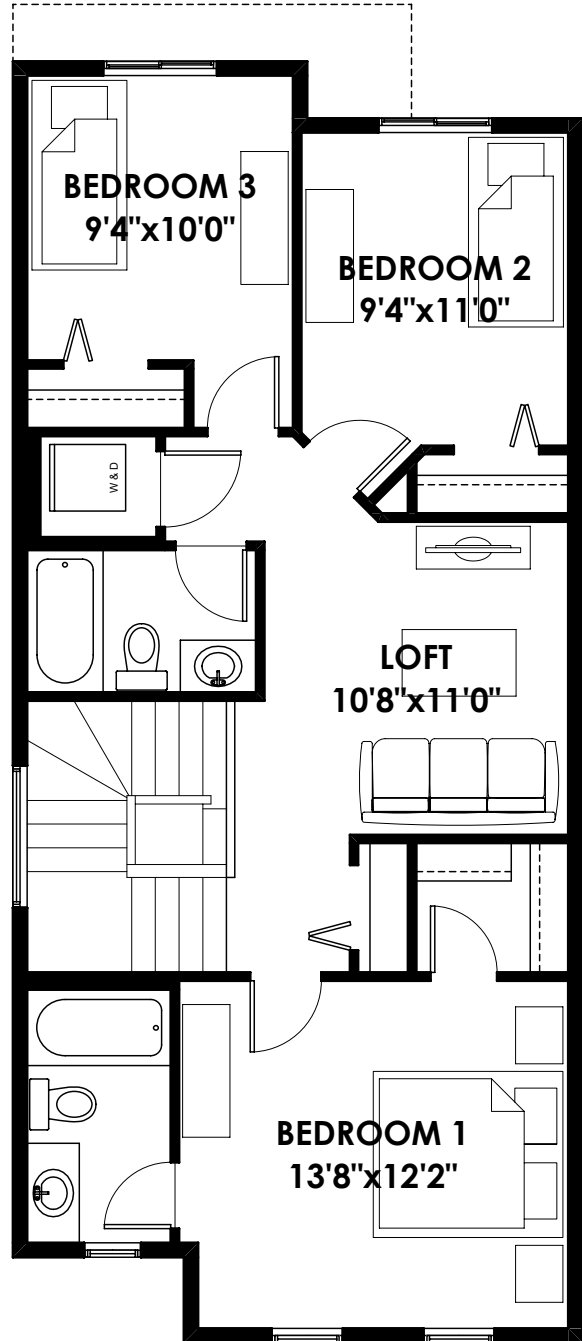
BETTER VALUE BY DESIGN
SINCE 1978 | HOMESBYAVI.COM

Homes by **AVI**

FLOOR PLAN



MAIN
884 SQ FT



UPPER
856 SQ FT

For more information or to book an appointment please contact us at **403.536.7195**

Prices are subject to change without notice. Actual floor plan, elevation, and square footage may not be exactly as shown. Square footage is measured to Alberta Building Code (ABC) regulations. Builder reserves the right to make changes without notice. E&OE.

Homes by **AVI**