

QUICK
POSSESSION

THE LINCOLN

2,544 SQ FT | 3 BED | 2.5 BATH

68 CREEKSIDE PATH SW



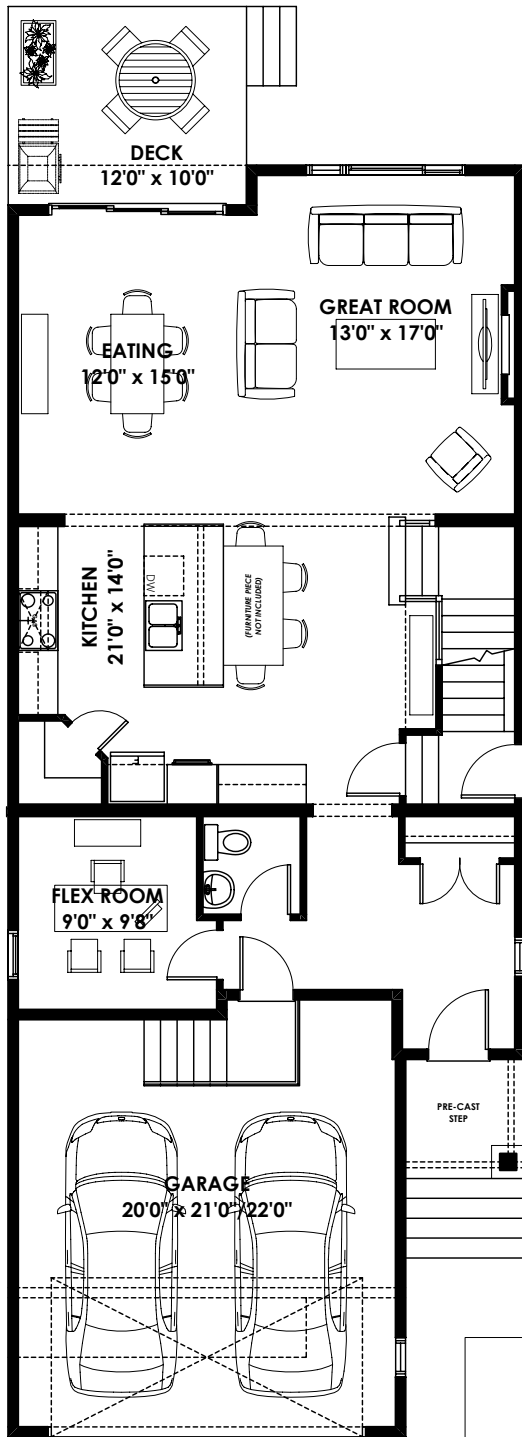
THIS FRONT DRIVE HOME FEATURES

- 9' ceilings for all 3 floors
- Upgraded kitchen package featuring cabinets to the ceiling, built in microwave and oven, gas cook top, chimney hoodfan and waterfall island plus more
- Engineered oak flooring throughout main floor
- Electric fireplace with mantle and tile
- Railing to stairwell
- Silgranit sink in kitchen and laundry
- Two zoned furnace
- Traditional lot

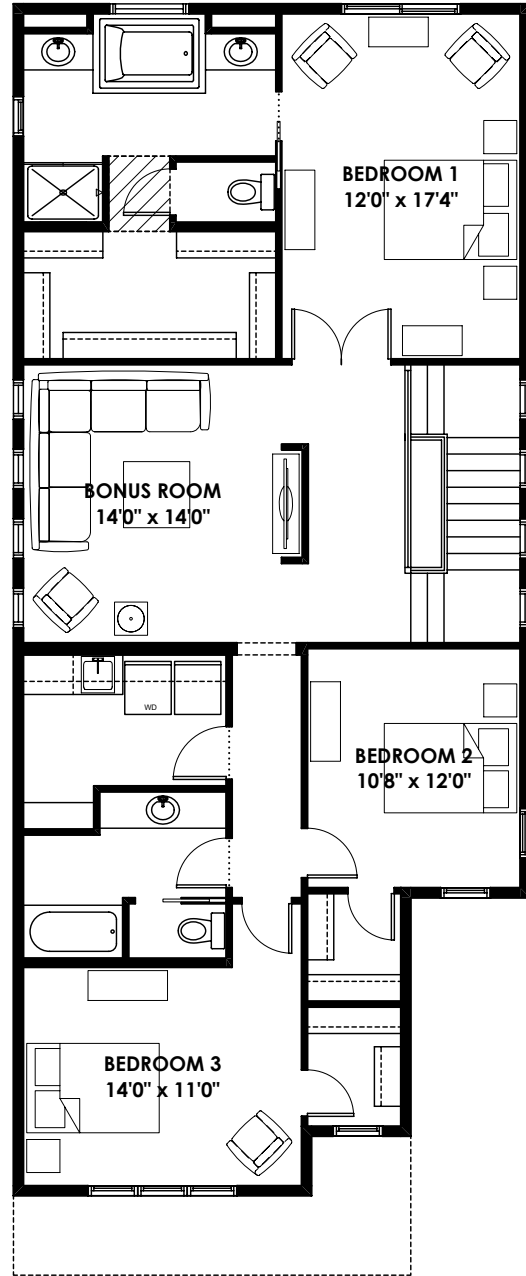
BETTER VALUE BY DESIGN
SINCE 1978 | HOMESBYAVI.COM

Homes by **AVI**

FLOOR PLAN



MAIN
1,099 SQ FT



UPPER
1,445 SQ FT

For more information or to book an appointment please contact us at **403.536.7037**

Prices are subject to change without notice. Actual floor plan, elevation, and square footage may not be exactly as shown. Square footage is measured to Alberta Building Code (ABC) regulations. Builder reserves the right to make changes without notice. E&OE.

Homes by **AVI**