

QUICK
POSSESSION

THE HAWTHORNE

2,208 SQ FT | 4 BED | 3 BATH

236 MALLARD GROVE SE



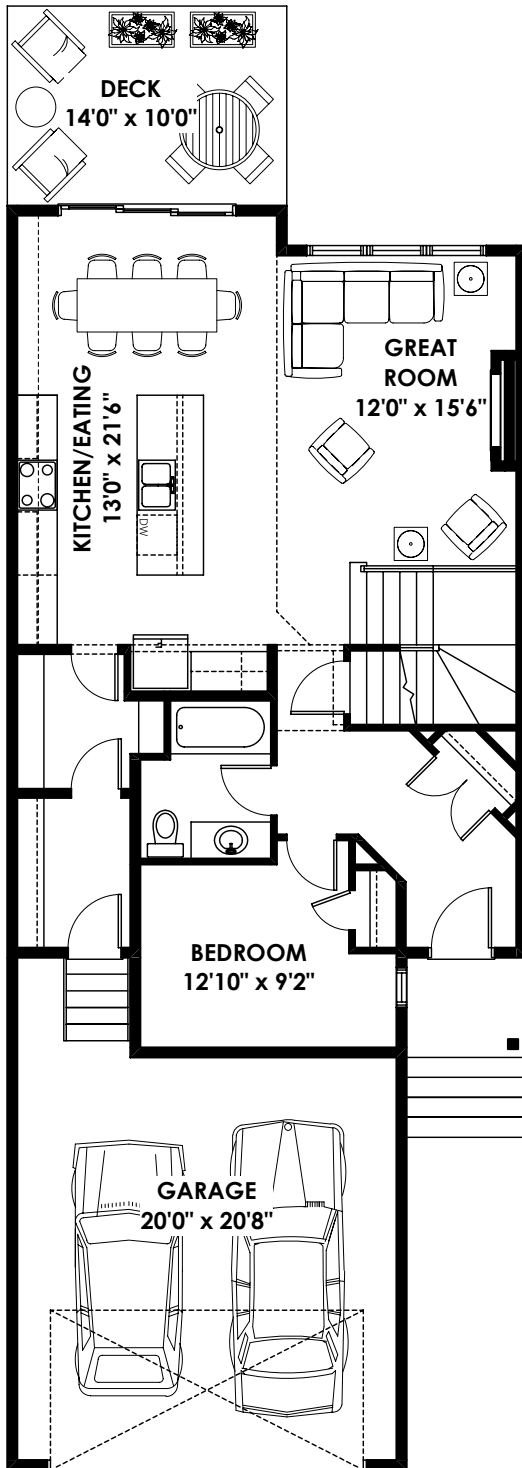
THIS FRONT DRIVE HOME FEATURES

- Open to Below
- Luxury vinyl plank flooring
- Main floor bedroom with full bath
- Primary suite features a 5-piece ensuite with dual vanity sinks, a walk-in closet.
- Direct access to the laundry room at the rear of the home.
- 42" tall cabinets in kitchen Quartz cabinets throughout
- Fireplace in great room
- Upgraded iron and wood railing
- Upgraded lighting package

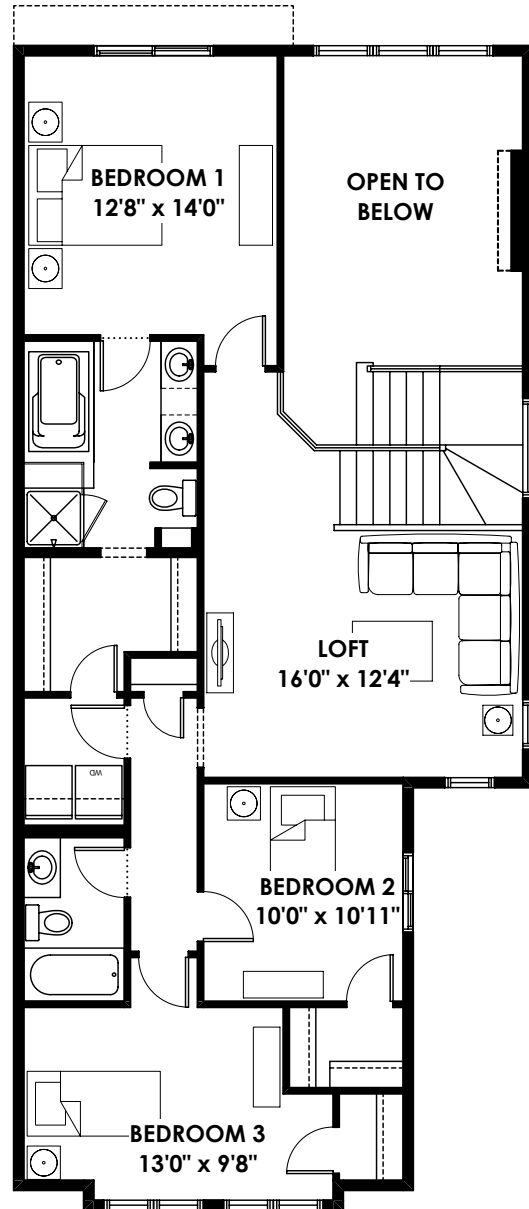
BETTER VALUE BY DESIGN
SINCE 1978 | HOMESBYAVI.COM

Homes by **AVI**

FLOOR PLAN



MAIN
1,025 SQ FT



UPPER
1,183 SQ FT

For more information or to book an appointment please contact us at **403.536.7189**

Prices are subject to change without notice. Actual floor plan, elevation, and square footage may not be exactly as shown. Square footage is measured to Alberta Building Code (ABC) regulations. Builder reserves the right to make changes without notice. E&OE.

Homes by **AVI**