

QUICK
POSSESSION

THE ANDRE

2,453 SQ FT | 4 BED | 3 BATH

292 MALLARD GROVE SE



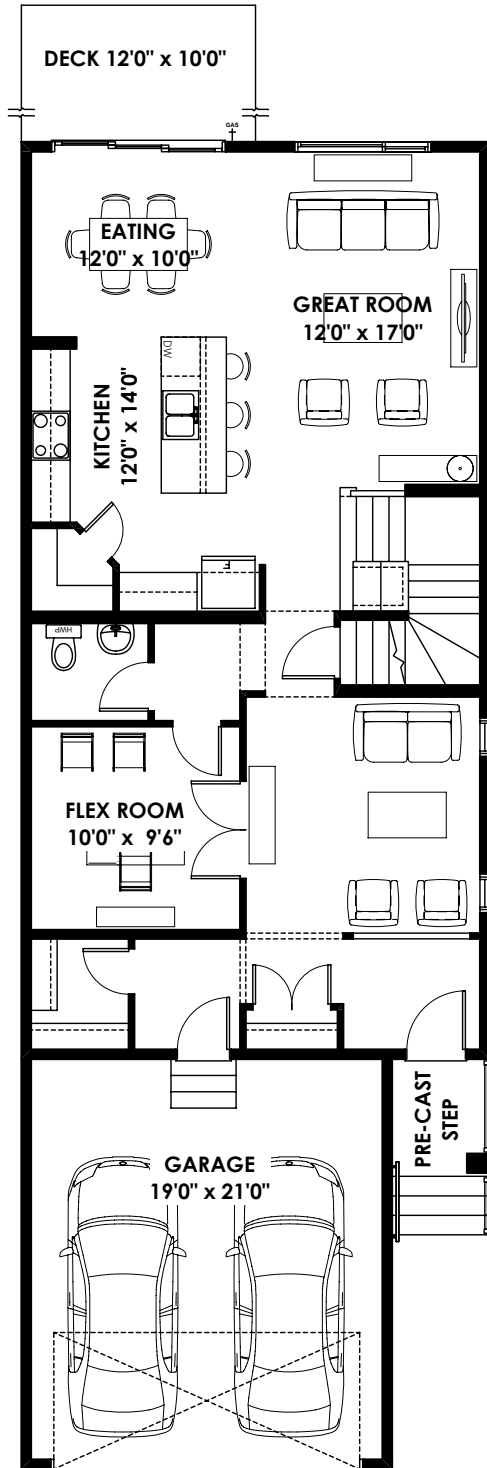
THIS FRONT DRIVE HOME FEATURES

- Stunning walkout basement overlooking storm pond.
- Spacious primary bedroom with ensuite and walk-in closet
- Convenient main floor flex room.
- Great-sized upper central bonus room.
- Upper laundry room with sink
- Quartz counters in kitchen and all bathrooms
- Fire place with mantle in great room
- Upgraded lighting package included
- 48" upper cabinets in kitchen

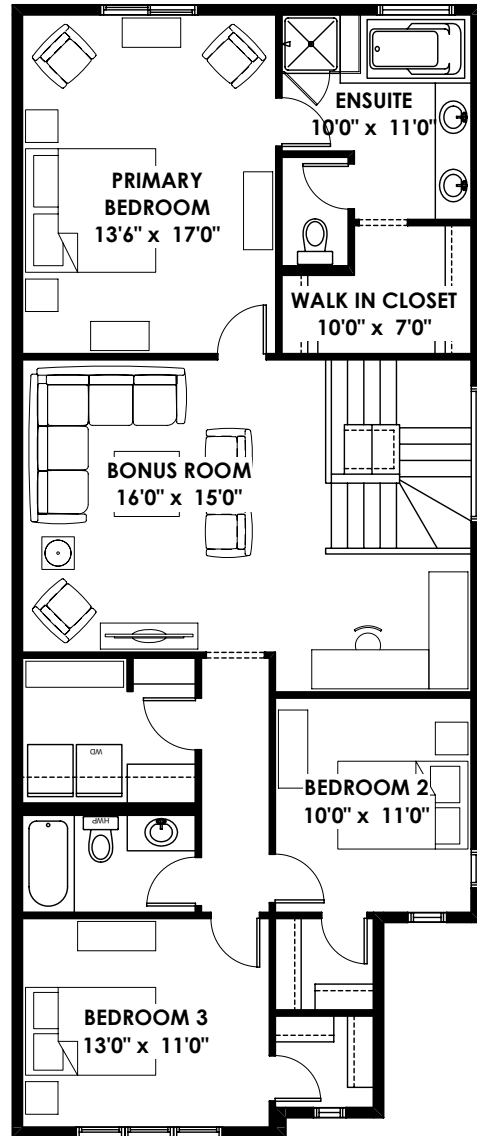
BETTER VALUE BY DESIGN
SINCE 1978 | HOMESBYAVI.COM

Homes by **AVI**

FLOOR PLAN



MAIN
1,128 SQ FT



UPPER
1,325 SQ FT

For more information or to book an appointment please contact us at **403.536.7189**

Prices are subject to change without notice. Actual floor plan, elevation, and square footage may not be exactly as shown. Square footage is measured to Alberta Building Code (ABC) regulations. Builder reserves the right to make changes without notice. E&OE.

Homes by **AVI**