

QUICK  
POSSESSION

# THE GREGORY

1,735 SQ FT | 4 BED | 3 BATH

398 SORA WAY SE



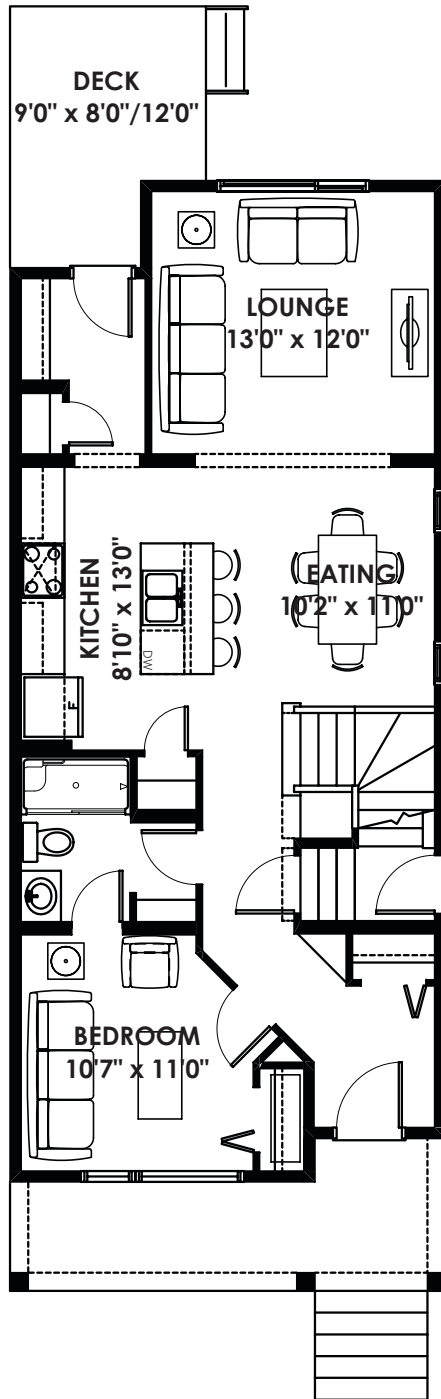
## THIS LANED HOME FEATURES

- Rear deck
- Set up for future legal suite (side entry to basement, 9' foundation walls, 200 AMP electrical panel, etc.)
- 20' x 20' concrete parking pad
- Interior upgrades include 48" kitchen cabinets, quartz throughout, 400 CFM chimney hoodfan and more
- Main floor bedroom and full bathroom

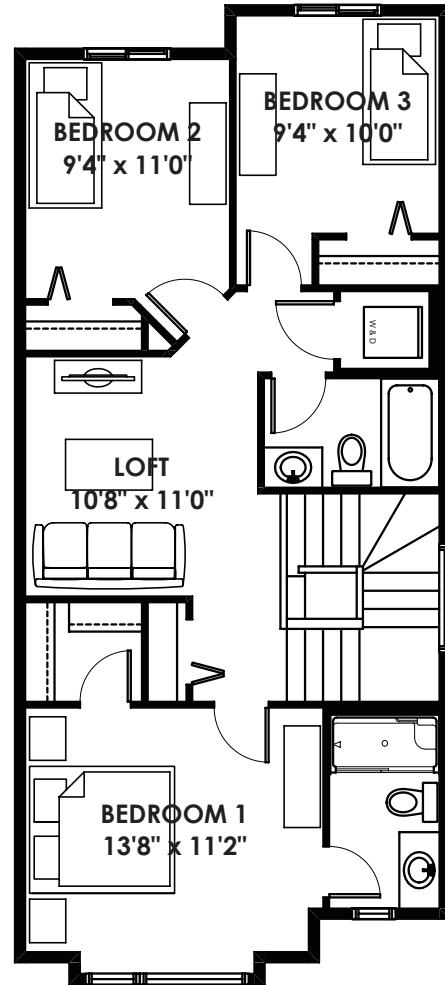
BETTER VALUE BY DESIGN  
SINCE 1978 | HOMESBYAVI.COM

Homes by **AVI**

# FLOOR PLAN



**MAIN**  
884 SQ FT



**UPPER**  
851 SQ FT

For more information or to book an appointment please contact us at **403.536.7036**

Prices are subject to change without notice. Actual floor plan, elevation, and square footage may not be exactly as shown. Square footage is measured to Alberta Building Code (ABC) regulations. Builder reserves the right to make changes without notice. E&OE.

Homes by **AVI**