

QUICK
POSSESSION

THE MARICOPA

2,021 SQ FT FINISHED AREA | 3 BED + FLEX | 2.5 BATH

53 RHEA CRESCENT, ST. ALBERT



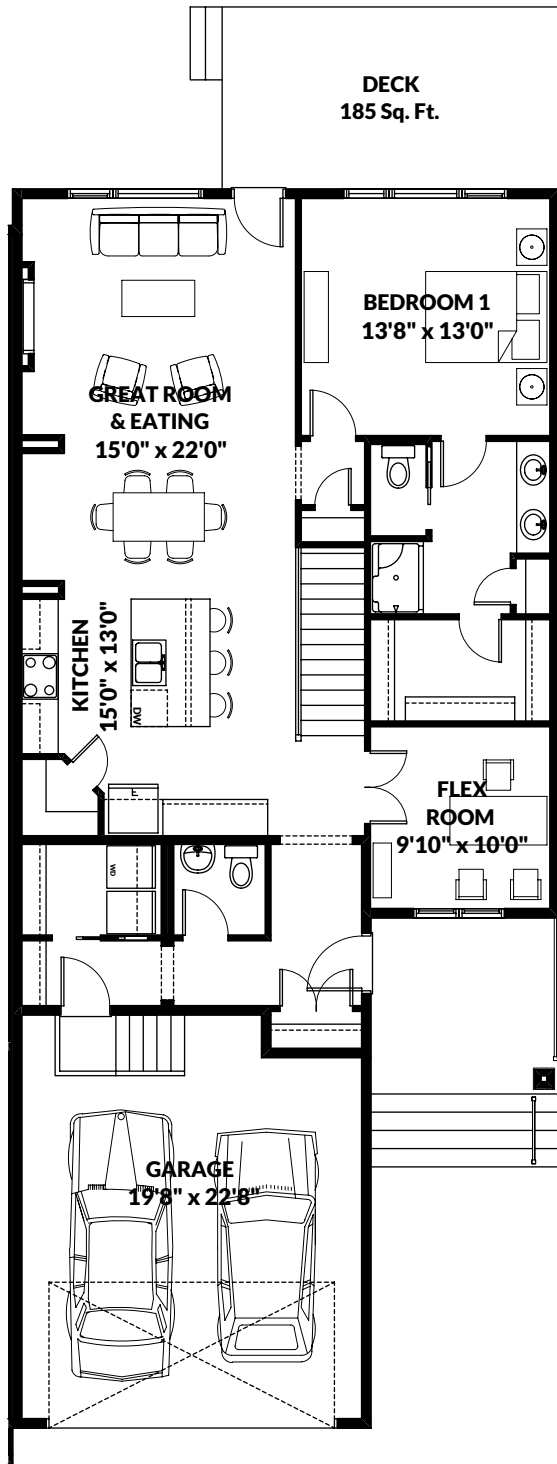
THIS BUNGALOW VILLA HOME FEATURES

- Includes front and rear landscaping.
- 1 year of yard maintenance.
- 18' by 10' rear deck.
- Fully finished basement with 9' ceilings.
- Dual zone heating.
- 2 bedrooms in the lower level.
- Gourmet kitchen with 7' island.

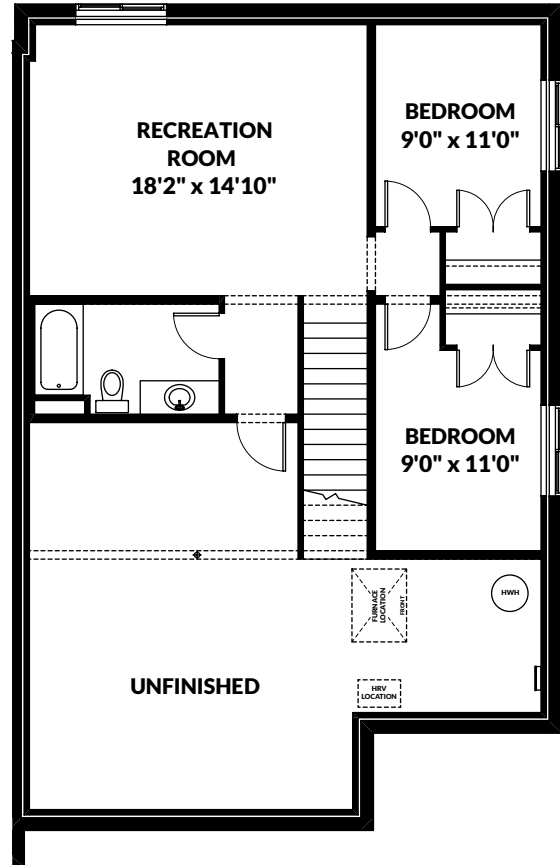
BETTER VALUE BY DESIGN
SINCE 1978 | HOMESBYAVI.COM

Homes by **AVI**

FLOOR PLAN



MAIN
1,319 SQ FT



BASEMENT
702 SQ FT

For more information or to book an appointment please contact us at **587.525.5101**

Prices are subject to change without notice. Actual floor plan, elevation, and square footage may not be exactly as shown. Square footage is measured to Alberta Building Code (ABC) regulations. Builder reserves the right to make changes without notice. E&OE.

Homes by **AVI**