

QUICK  
POSSESSION

# THE HEMSWORTH

2,067SQ FT | 4 BED | 3 BATH

2029 MUCKLEPLUM CRESCENT SW



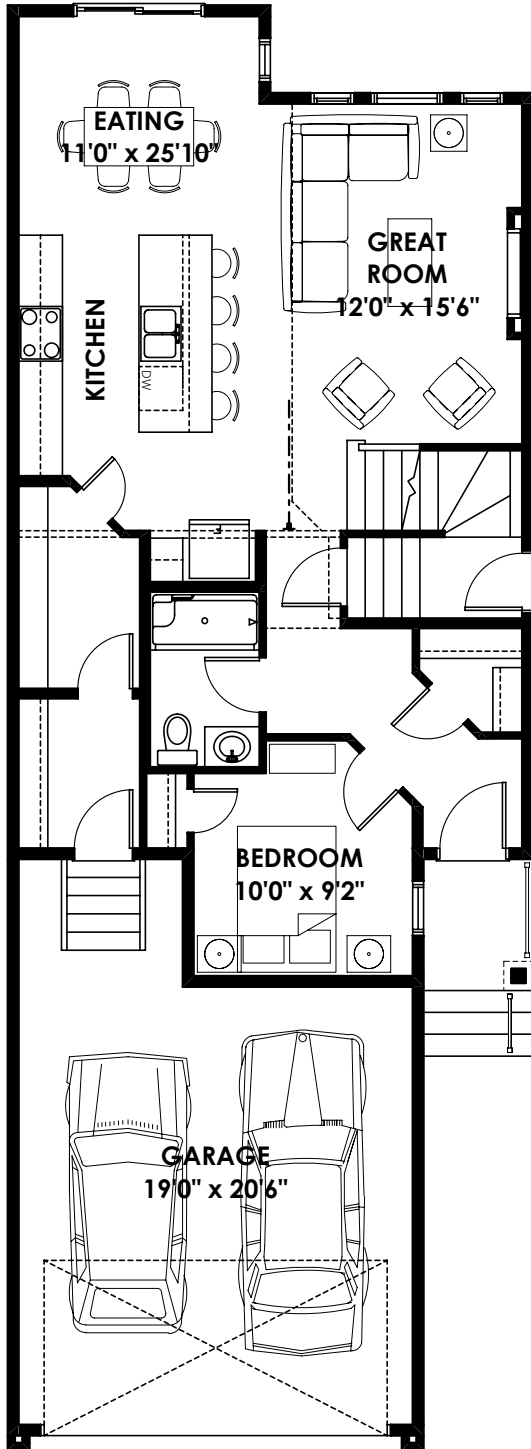
## THIS FRONT DRIVE HOME FEATURES

- Main floor bedroom with full bath.
- Electric fireplace with mantle in great room.
- Upgraded kitchen includes over the range hoodfan.
- Board and batten feature wall in great room.
- Iron spindle railing.
- Open to below great room.

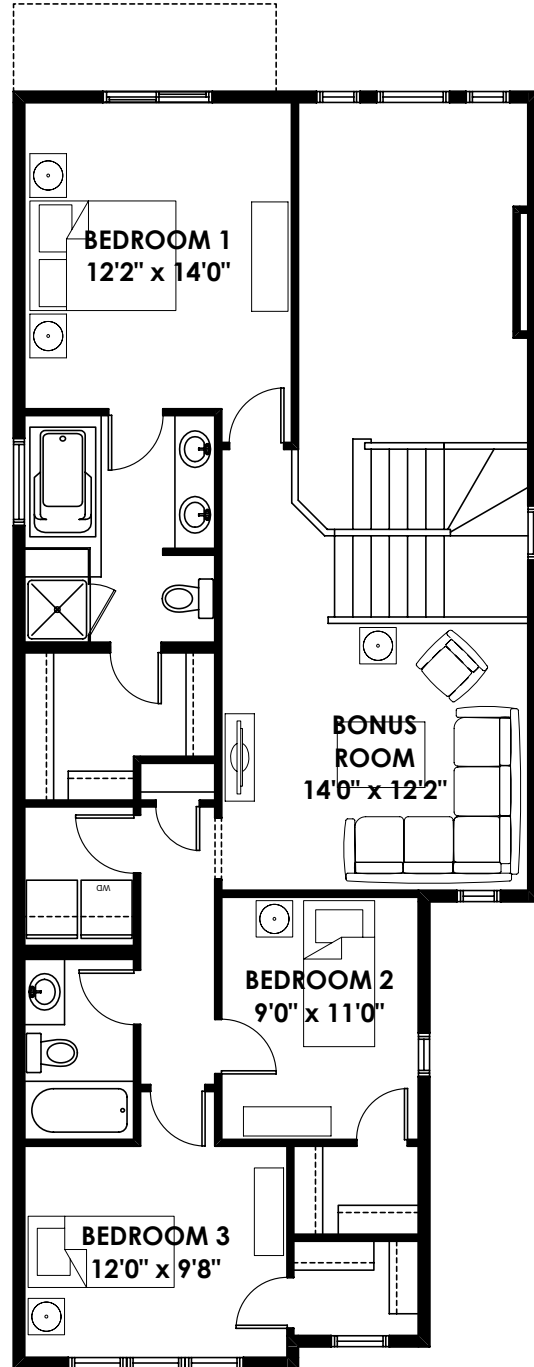
BETTER VALUE BY DESIGN  
SINCE 1978 | HOMESBYAVI.COM

Homes by **AVI**

## FLOOR PLAN



**MAIN**  
952 SQ FT



**UPPER**  
1,115 SQ FT

For more information or to book an appointment please contact us at **587.525.5184**

Prices are subject to change without notice. Actual floor plan, elevation, and square footage may not be exactly as shown. Square footage is measured to Alberta Building Code (ABC) regulations. Builder reserves the right to make changes without notice. E&OE.

Homes by **AVI**