

QUICK
POSSESSION

THE BRYSON

1,812 SQ FT | 3 BED + FLEX | 3 BATH

2127 MUCKLEPLUM CRESCENT SW



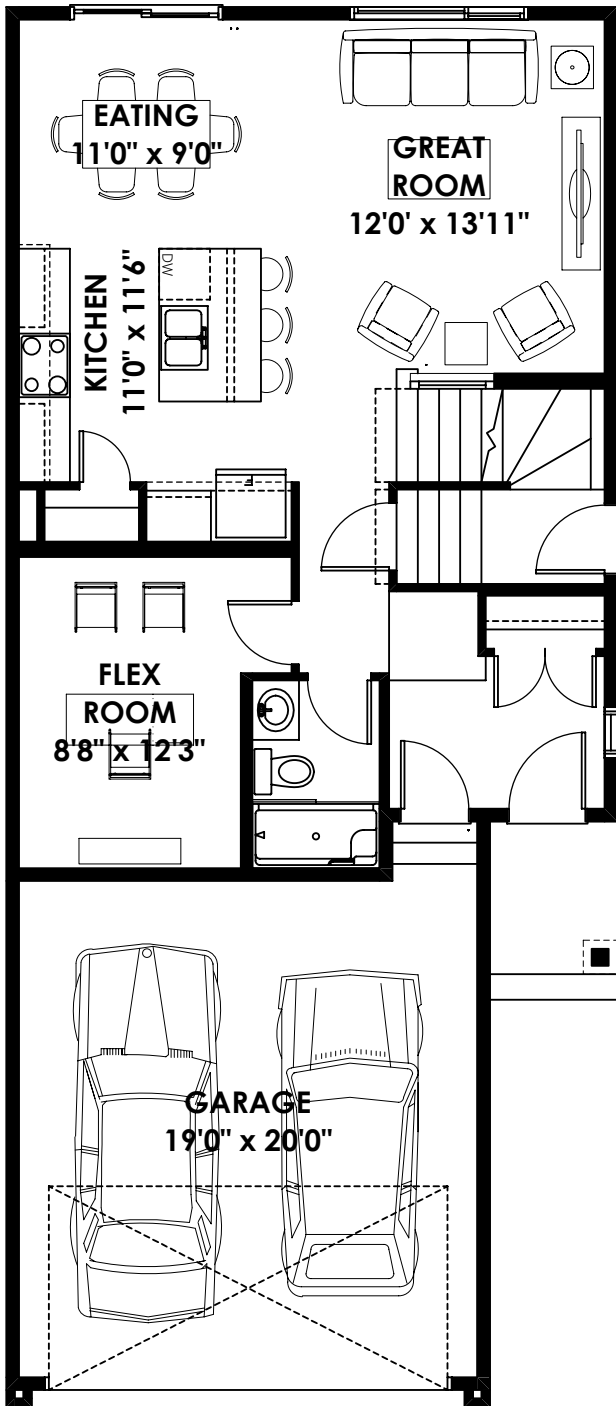
THIS FRONT DRIVE HOME FEATURES

- Iron spindle railing.
- Upgraded kitchen over the range hood fan .
- Front and back landscaping.
- Main floor flex room with a full bath.
- Brand-new appliances: washer & dryer, fridge, range, dishwasher, microwave.
- Side entrance.

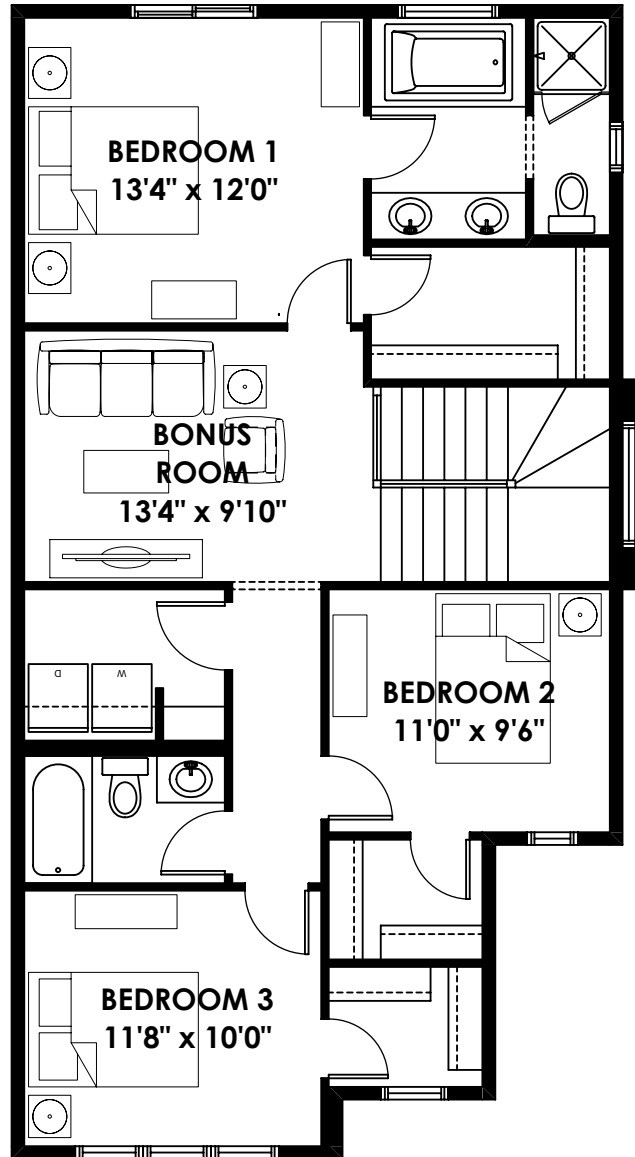
BETTER VALUE BY DESIGN
SINCE 1978 | HOMESBYAVI.COM

Homes by **AVI**

FLOOR PLAN



MAIN
803 SQ FT



UPPER
1,009 SQ FT

For more information or to book an appointment please contact us at **587.525.5184**

Prices are subject to change without notice. Actual floor plan, elevation, and square footage may not be exactly as shown. Square footage is measured to Alberta Building Code (ABC) regulations. Builder reserves the right to make changes without notice. E&OE.

Homes by **AVI**