

QUICK
POSSESSION

THE HAWTHORNE

2,201 SQ FT | 4 BED | 3 BATH

2209 - 193A STREET NW



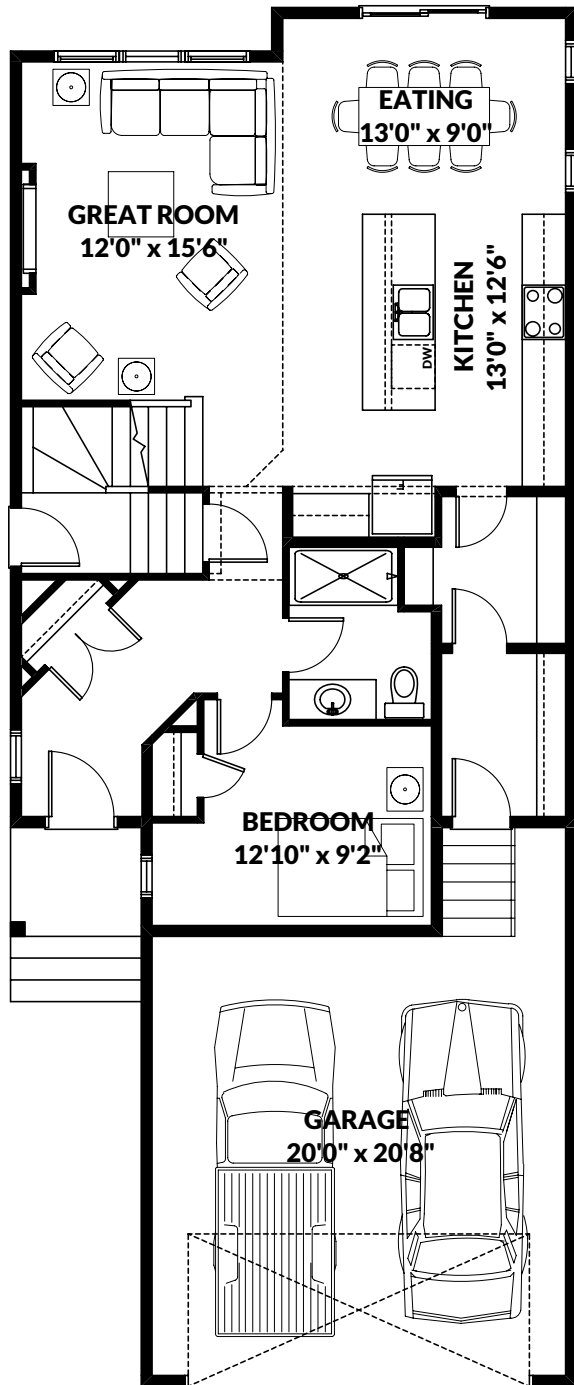
THIS FRONT DRIVE HOME FEATURES

- Traditional lot with added side windows and upgraded windows in the open to below great room.
- Upgraded kitchen cabinetry with pot and pan drawers, pantry towers, and cabinets to the ceiling.
- Wood covered hood fan over the range and built in microwave.
- Quartz countertops throughout with undermount sinks.
- Tiled shower walls with glass sliding door in the main floor bathroom.
- Railing with iron spindles.
- Suite ready for 1 bedroom legal basement suite.

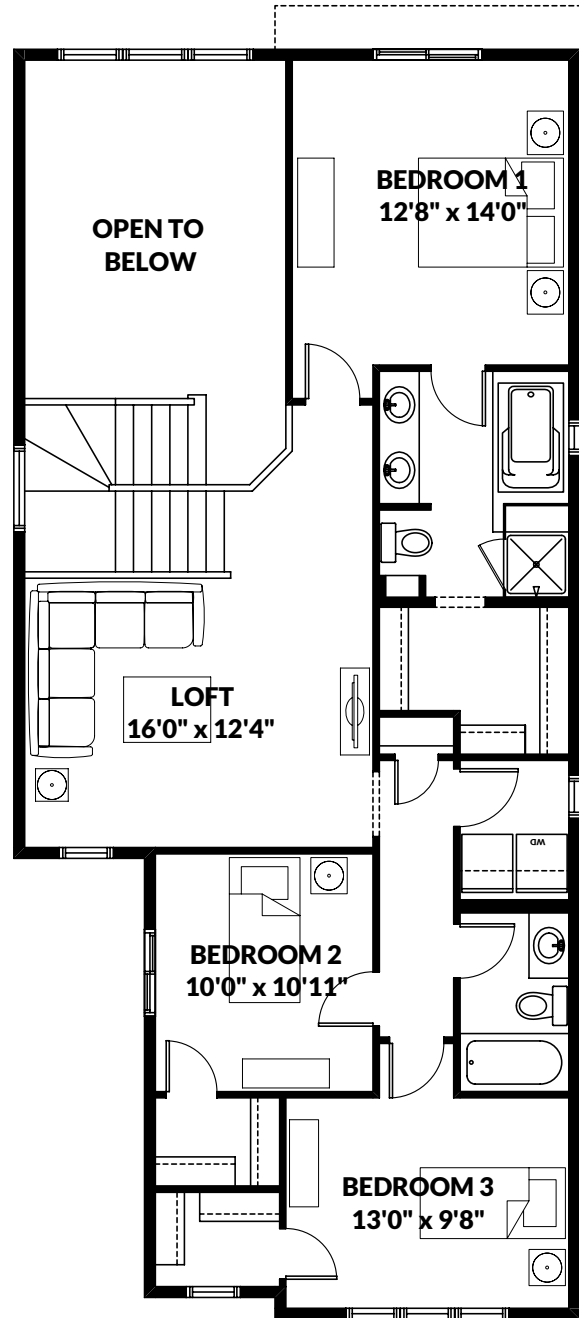
BETTER VALUE BY DESIGN
SINCE 1978 | HOMESBYAVI.COM

Homes by **AVI**

FLOOR PLAN



MAIN
1,017 SQ FT



UPPER
1,184 SQ FT

For more information or to book an appointment please contact us at **587.525.5089**

Prices are subject to change without notice. Actual floor plan, elevation, and square footage may not be exactly as shown. Square footage is measured to Alberta Building Code (ABC) regulations. Builder reserves the right to make changes without notice. E&OE.

Homes by **AVI**