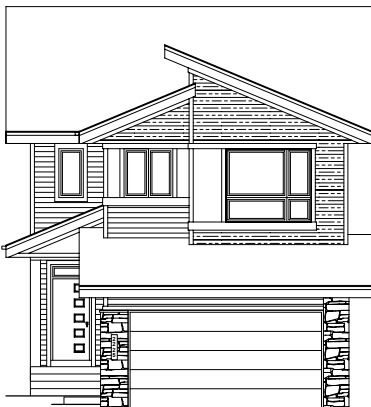


QUICK  
POSSESSION

# THE LINCOLN

2,573 SQ FT | 5 BED | 3 BATH

2225 - 193A STREET NW



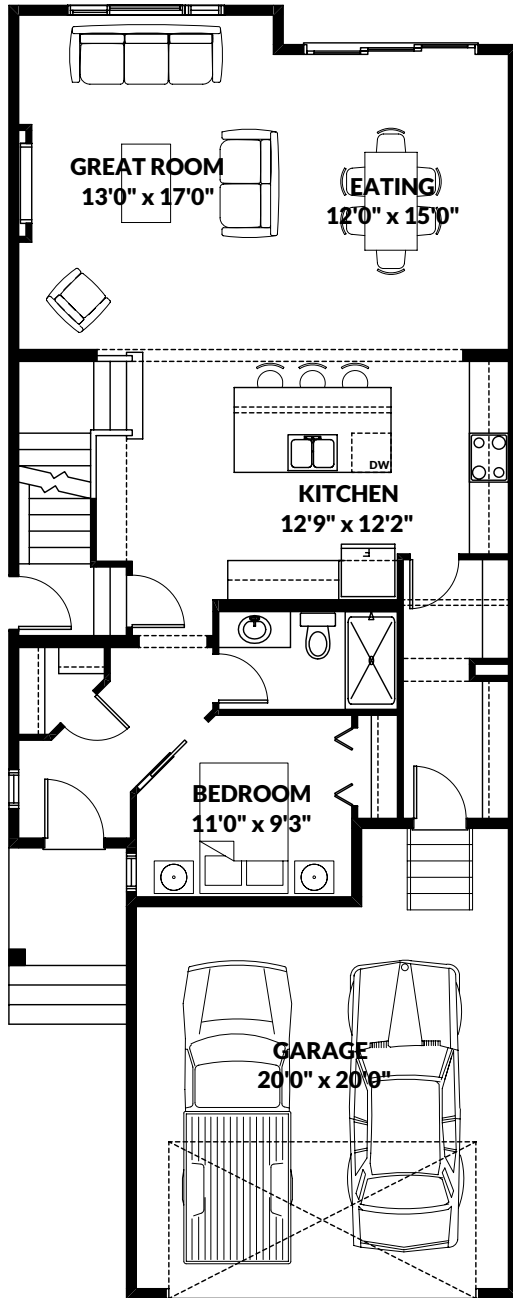
## THIS FRONT DRIVE HOME FEATURES

- Traditional lot with added side windows.
- Built in appliances with a chimney hood fan over the range.
- Upgraded kitchen cabinets with pot and pan drawers & modern stacked glass upper cabinets to ceiling.
- MDF shelving in the walk through pantry.
- Quartz countertops throughout with undermount sinks.
- Railing with iron spindles.
- Suite ready for future 2-bedroom legal suite.

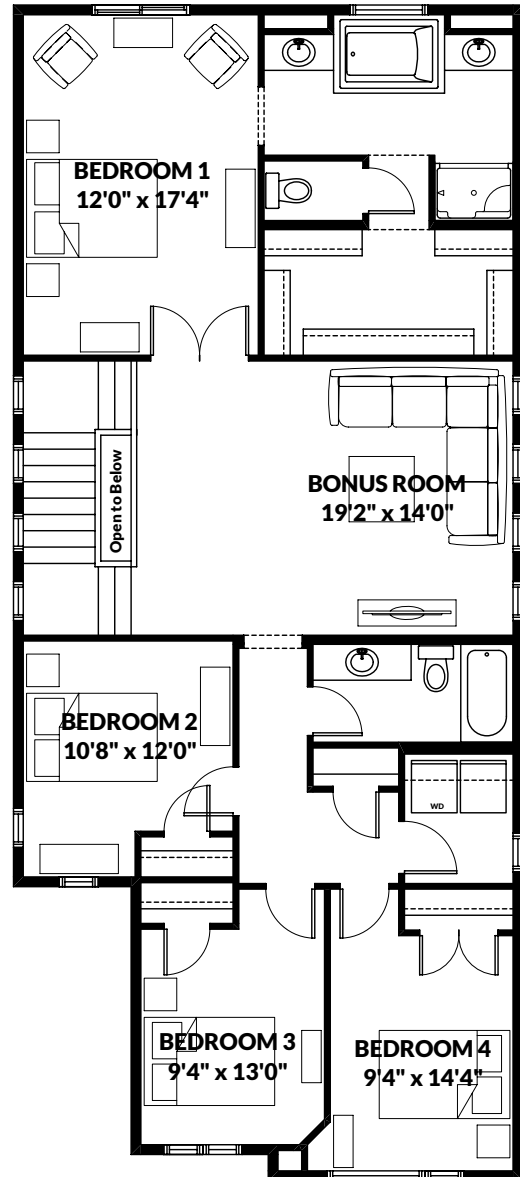
BETTER VALUE BY DESIGN  
SINCE 1978 | HOMESBYAVI.COM

Homes by **AVI**

# FLOOR PLAN



**MAIN**  
1,122 SQ FT



**UPPER**  
1,451 SQ FT

For more information or to book an appointment please contact us at **587.525.5089**

Prices are subject to change without notice. Actual floor plan, elevation, and square footage may not be exactly as shown. Square footage is measured to Alberta Building Code (ABC) regulations. Builder reserves the right to make changes without notice. E&OE.

Homes by **AVI**