

QUICK  
POSSESSION

# THE JEFFERSON

2,349 SQ FT | 4 BED | 2.5 BATH

20775 - 24 AVENUE NW



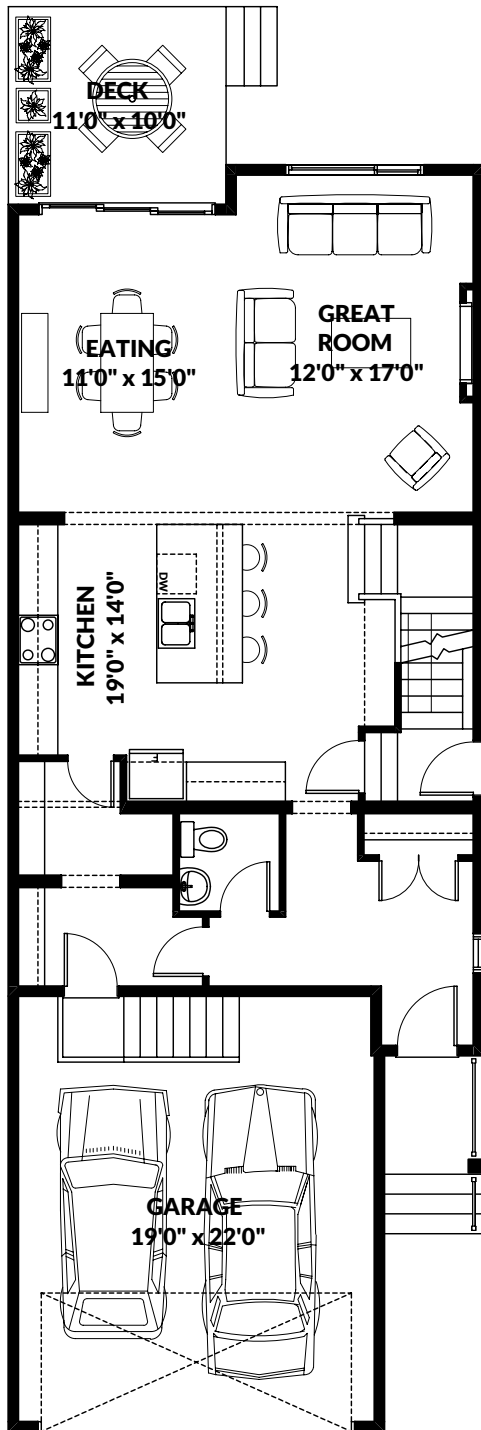
## THIS FRONT DRIVE HOME FEATURES

- 4 bedroom with 2.5 bath.
- 9' ceilings on the main and basement.
- Side door to basement.
- Oversized windows.
- Pie lot with rear fencing by developer.
- 11' by 12' deck included.

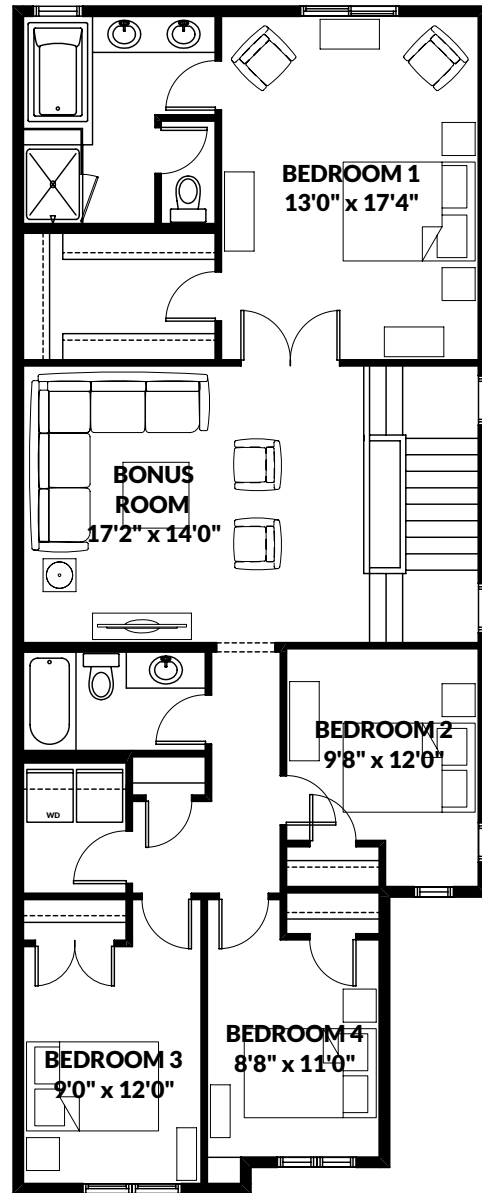
BETTER VALUE BY DESIGN  
SINCE 1978 | HOMESBYAVI.COM

Homes by **AVI**

# FLOOR PLAN



**MAIN**  
1,003 SQ FT



**UPPER**  
1,346 SQ FT

For more information or to book an appointment please contact us at **587.525.5200**

Prices are subject to change without notice. Actual floor plan, elevation, and square footage may not be exactly as shown. Square footage is measured to Alberta Building Code (ABC) regulations. Builder reserves the right to make changes without notice. E&OE.

Homes by **AVI**