

QUICK
POSSESSION

THE JEFFERSON

2,353 SQ FT | 3 BED + FLEX | 2.5 BATH

284 MALLARD GROVE SE



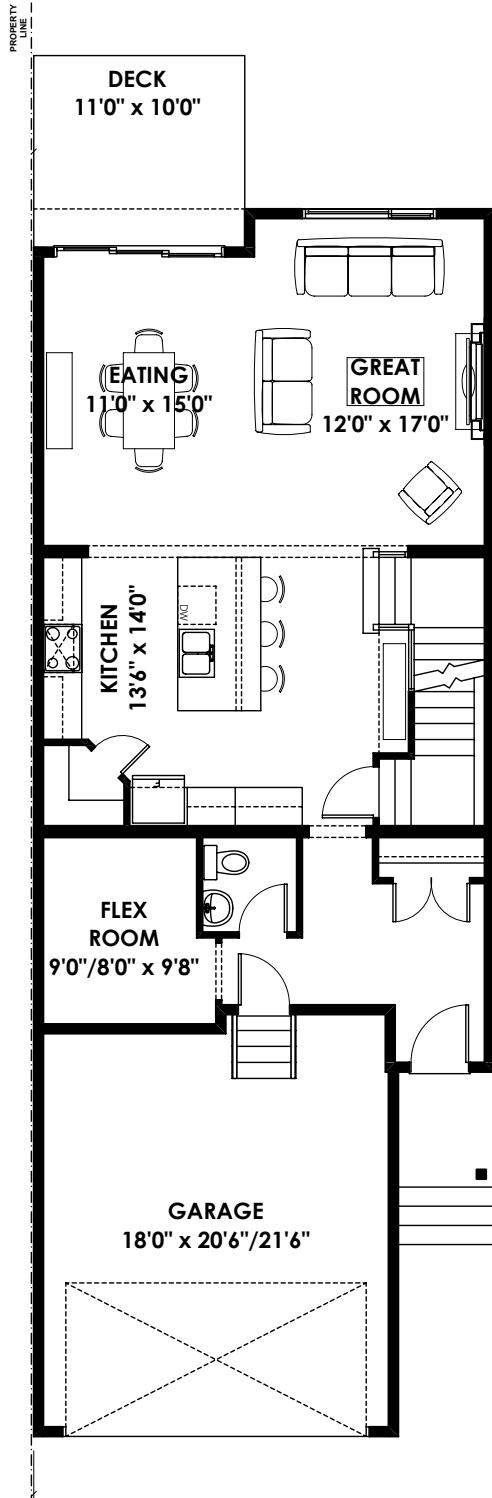
THIS FRONT DRIVE HOME FEATURES

- Walkout Basement
- Walkout Deck
- Large Upper Central Loft-Style Bonus Suite
- Spacious 13x17'4" Master Suite
- Both secondary bedrooms come with walk-in closets
- 48" Glass Wall Shower with Bench

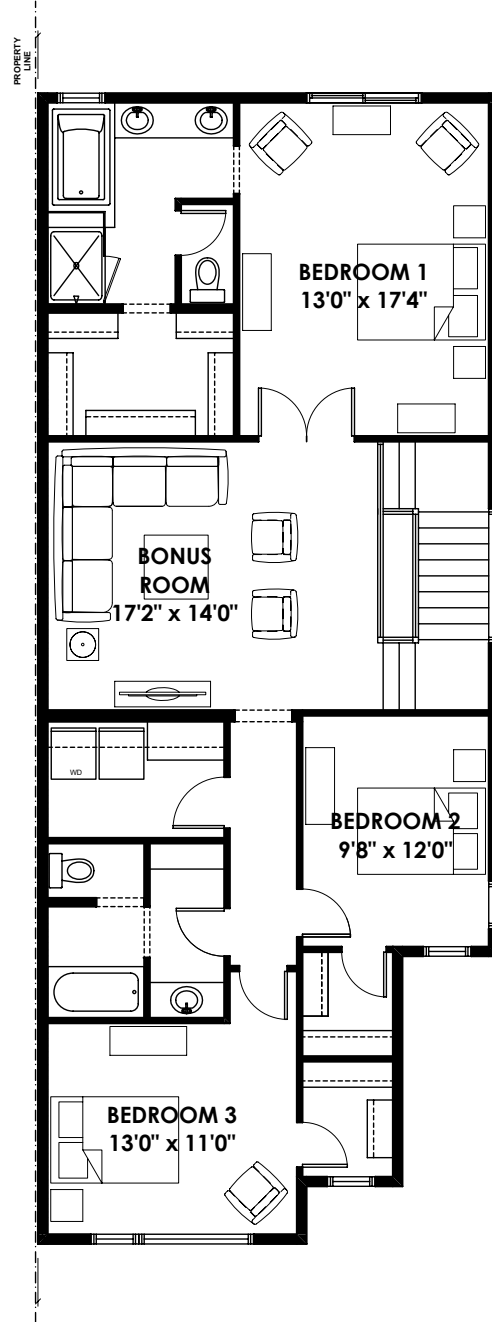
BETTER VALUE BY DESIGN
SINCE 1978 | HOMESBYAVI.COM

Homes by **AVI**

FLOOR PLAN



MAIN
1,013 SQ FT



UPPER
1,340 SQ FT

For more information or to book an appointment please contact us at **403.536.7189**

Prices are subject to change without notice. Actual floor plan, elevation, and square footage may not be exactly as shown. Square footage is measured to Alberta Building Code (ABC) regulations. Builder reserves the right to make changes without notice. E&OE.

Homes by **AVI**