

QUICK  
POSSESSION

# THE JEFFERSON

2,353 SQ FT | 3 BED | 2.5 BATH

95 VERSANT WY SW



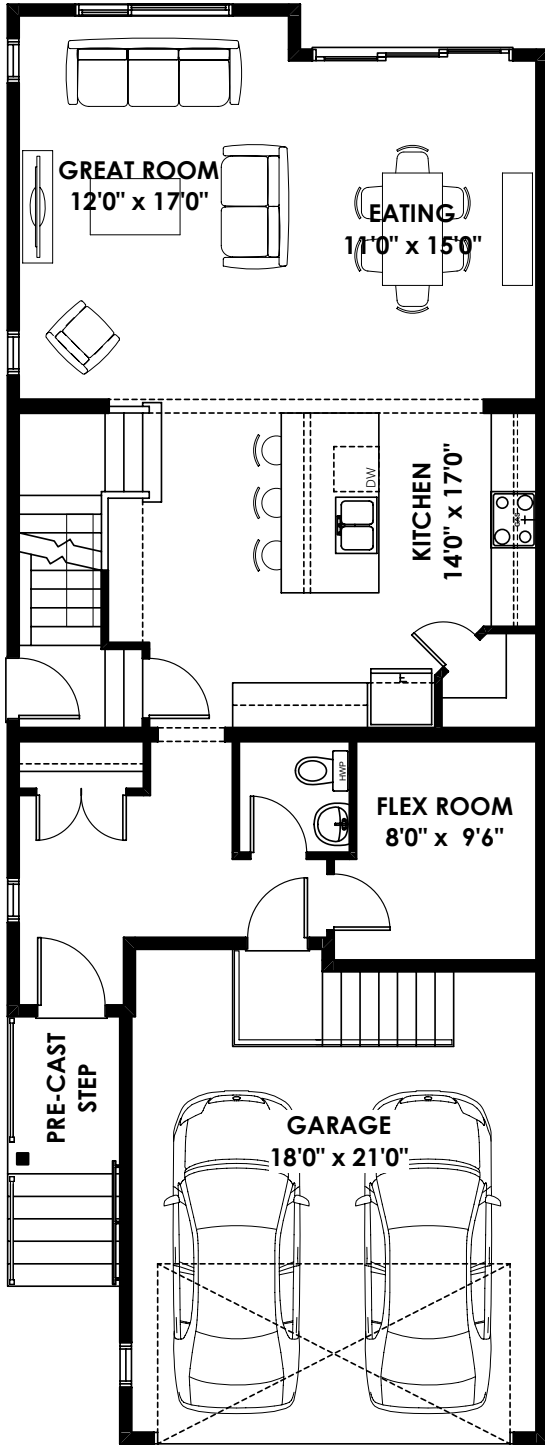
## THIS FRONT DRIVE HOME FEATURES

- Side entry
- 9' basement foundation
- Gourmet kitchen with gas cooktop, built-in wall oven and microwave
- Quartz in the kitchen and upper floor bathrooms
- 8' doors on main floor

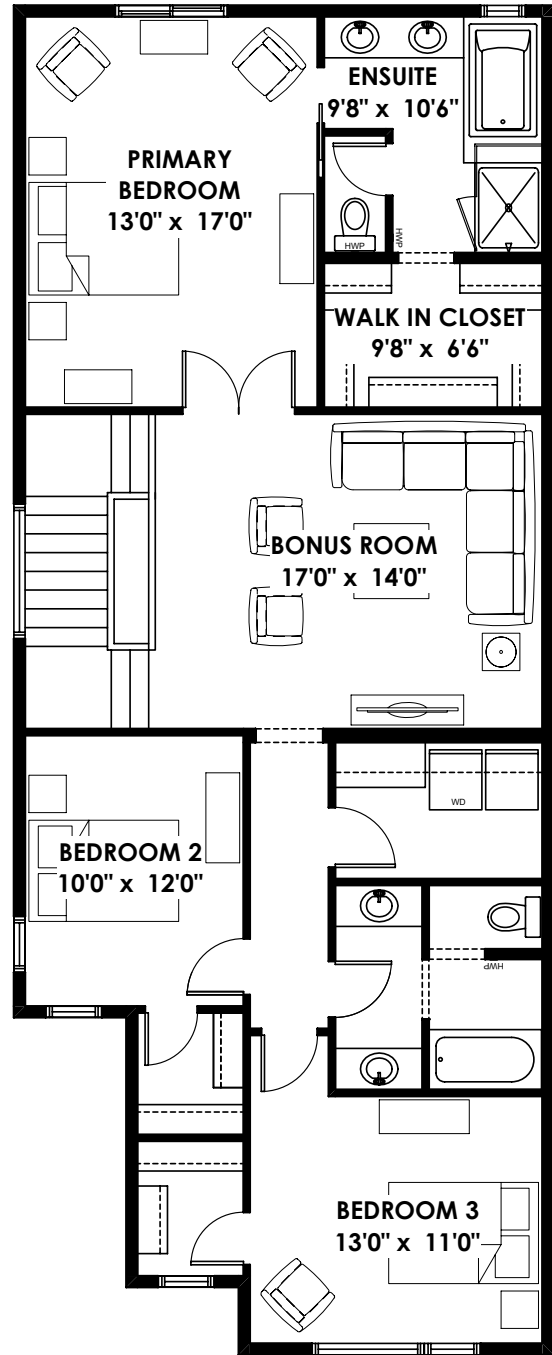
BETTER VALUE BY DESIGN  
SINCE 1978 | HOMESBYAVI.COM

Homes by **AVI**

# FLOOR PLAN



**MAIN**  
1,013 SQ FT



**UPPER**  
1,445 SQ FT

For more information or to book an appointment please contact us at **403.536.7189**

Prices are subject to change without notice. Actual floor plan, elevation, and square footage may not be exactly as shown. Square footage is measured to Alberta Building Code (ABC) regulations. Builder reserves the right to make changes without notice. E&OE.

Homes by **AVI**