

QUICK
POSSESSION

THE HEMSWORTH

2,068 SQ FT | 3 BED + FLEX | 2.5 BATH

235 MALLARD GROVE SE



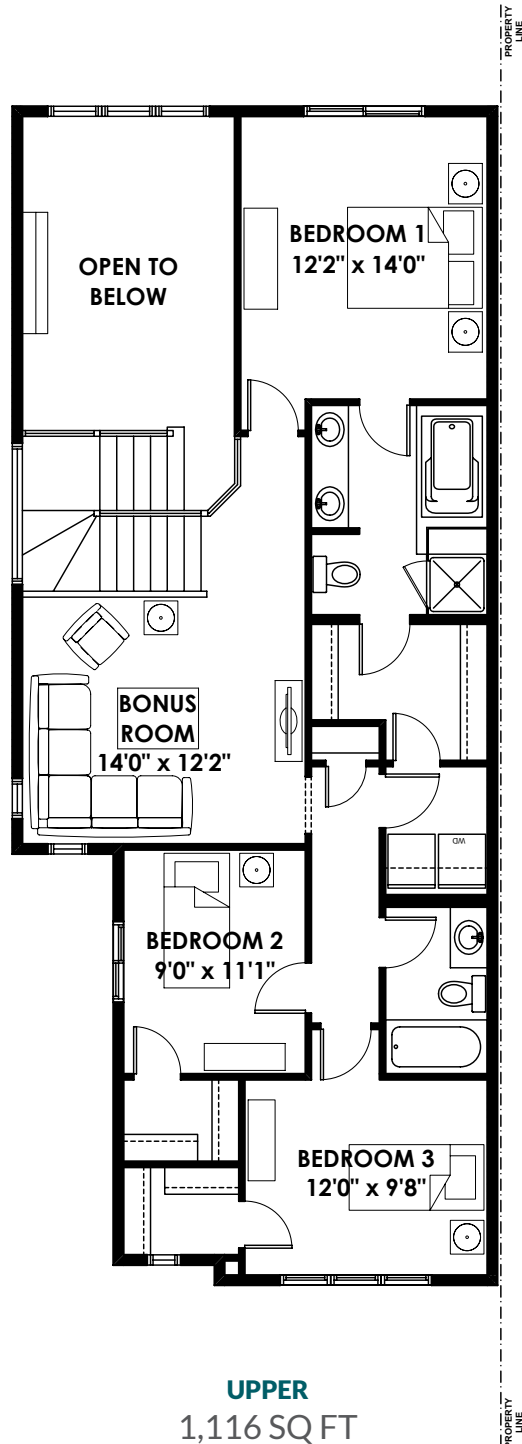
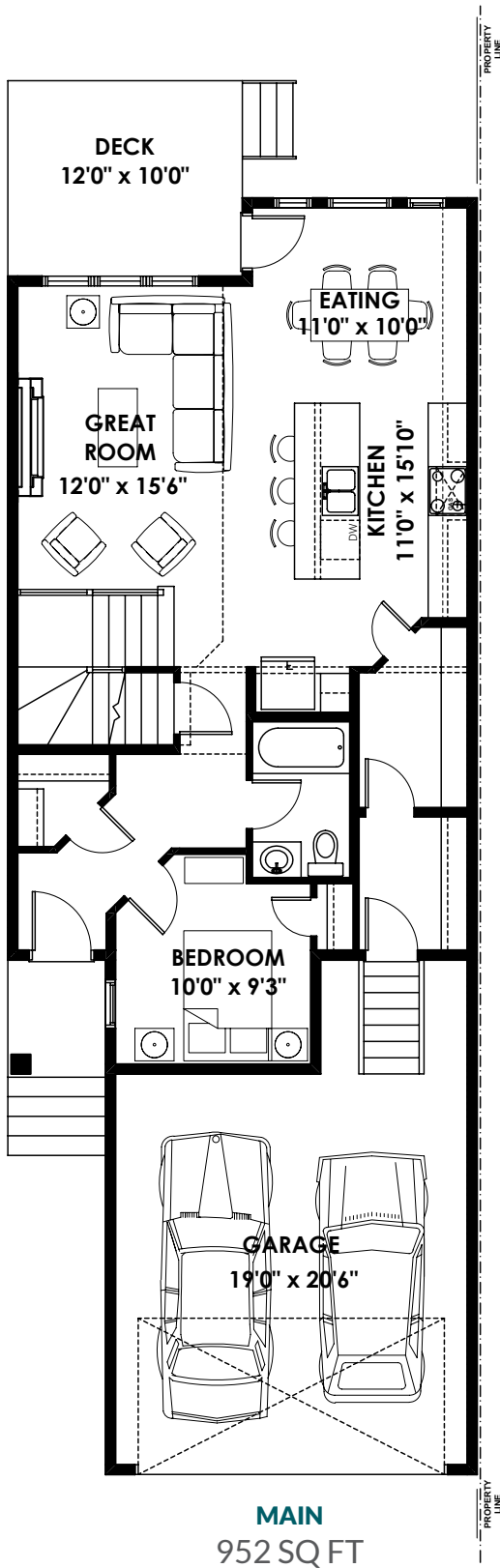
THIS FRONT DRIVE HOME FEATURES

- West backyard, overlooking green space.
- Open concept main floor, open to below great room.
- Walkthrough pantry from garage for easy access to kitchen.
- Main floor bed room with full bathroom.
- Upper loft style bonus room and upper laundry.
- Each spacious bedroom comes with a walk-in closet.

BETTER VALUE BY DESIGN
SINCE 1978 | HOMESBYAVI.COM

Homes by **AVI**

FLOOR PLAN



For more information or to book an appointment please contact us at **403.536.7189**

Prices are subject to change without notice. Actual floor plan, elevation, and square footage may not be exactly as shown. Square footage is measured to Alberta Building Code (ABC) regulations. Builder reserves the right to make changes without notice. E.&OE.

Homes by **AVI**