

QUICK
POSSESSION

THE HEMSWORTH

2,067 SQ FT | 4 BED | 3 BATH

252 MALLARD GROVE SE



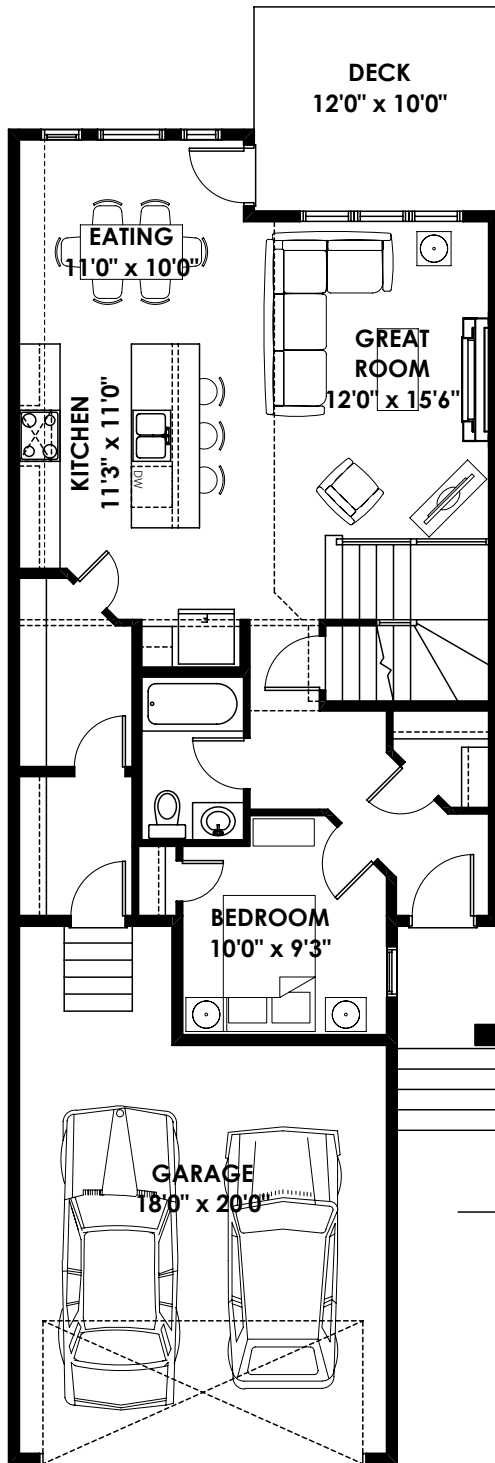
THIS FRONT DRIVE HOME FEATURES

- Stunning walkout basement overlooking storm pond.
- Open to below concept
- Walkthrough pantry from garage for easy access to kitchen.
- Main floor bed room and bathroom.
- Upper central bonus room and upper laundry.
- Each spacious bedroom comes with a walk-in closet.

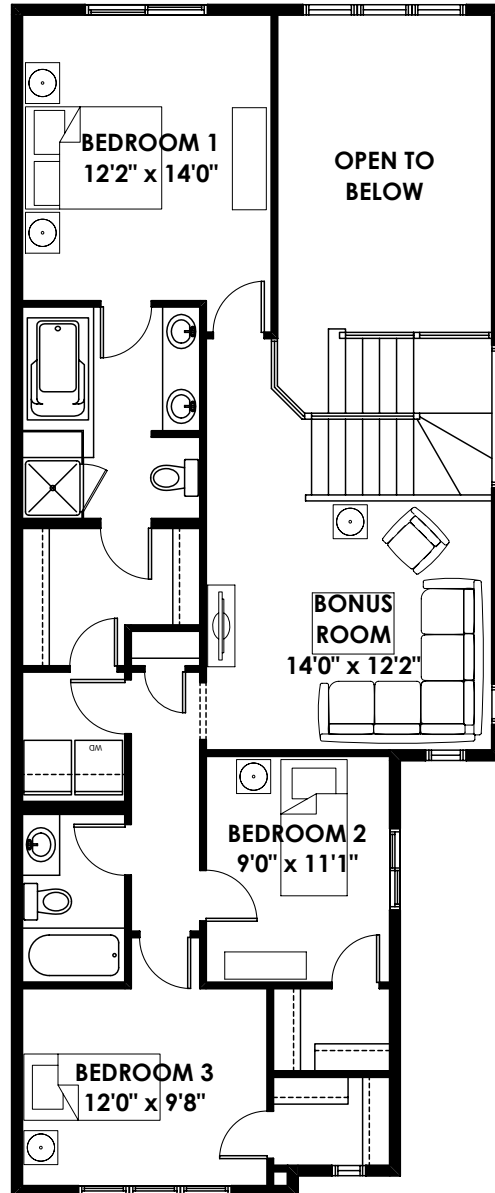
BETTER VALUE BY DESIGN
SINCE 1978 | HOMESBYAVI.COM

Homes by **AVI**

FLOOR PLAN



MAIN
952 SQ FT



UPPER
1,116 SQ FT

For more information or to book an appointment please contact us at **403.536.7189**

Prices are subject to change without notice. Actual floor plan, elevation, and square footage may not be exactly as shown. Square footage is measured to Alberta Building Code (ABC) regulations. Builder reserves the right to make changes without notice. E&OE.

Homes by **AVI**