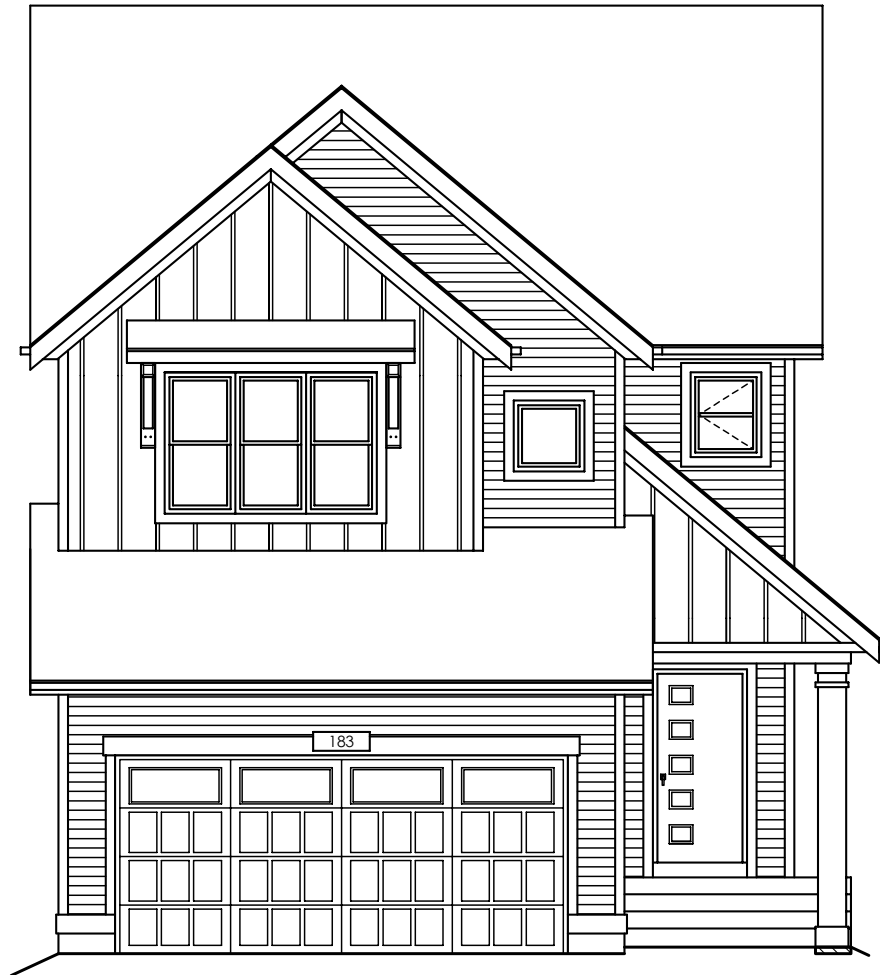


QUICK  
POSSESSION

# THE LINCOLN

2,564 SQ FT | 4 BED | 3 BATH

183 LANGWELL COMMON SE, AIRDRIE AB



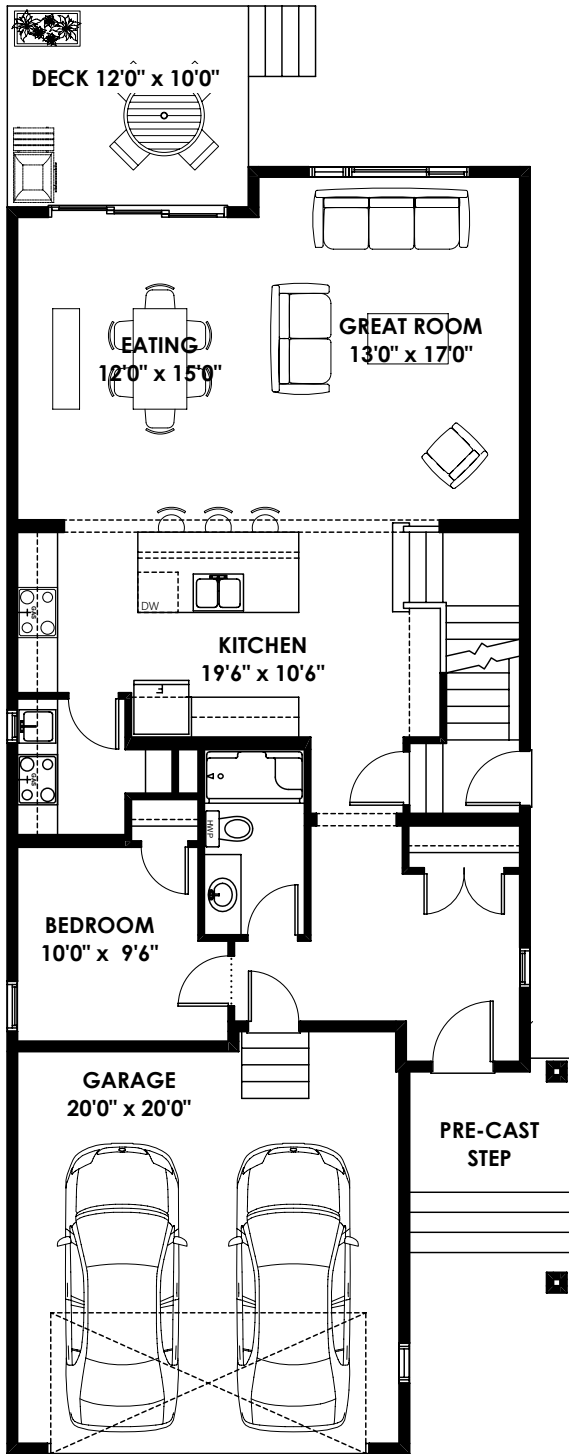
## THIS FRONT DRIVE HOME FEATURES

- 36' wide conventional lot backing onto green lane.
- 9' foundation wall, side entry door and rear deck.
- Main floor bedroom with full bath and spice kitchen.
- Open concept main floor with 9' ceiling and vaulted ceiling to upper floor bonus room and stairwell.
- Double sinks in ensuite with upgraded tile and glass shower.

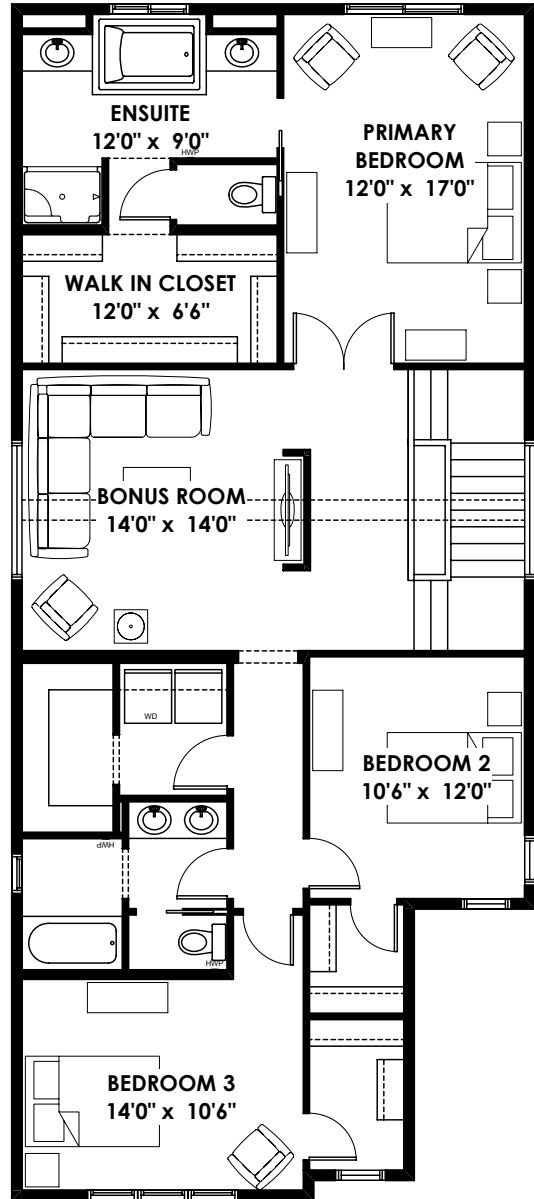
BETTER VALUE BY DESIGN  
SINCE 1978 | HOMESBYAVI.COM

Homes by **AVI**

# FLOOR PLAN



**MAIN**  
1119 SQ FT



**UPPER**  
1,445 SQ FT

For more information or to book an appointment please contact us at **403.536.7203**

Prices are subject to change without notice. Actual floor plan, elevation, and square footage may not be exactly as shown. Square footage is measured to Alberta Building Code (ABC) regulations. Builder reserves the right to make changes without notice. E&OE.

Homes by **AVI**