

QUICK
POSSESSION

THE GABRIEL

2,059 SQ FT | 3 BED | 3 BATH

2115 MUCKLEPLUM CRESCENT SW



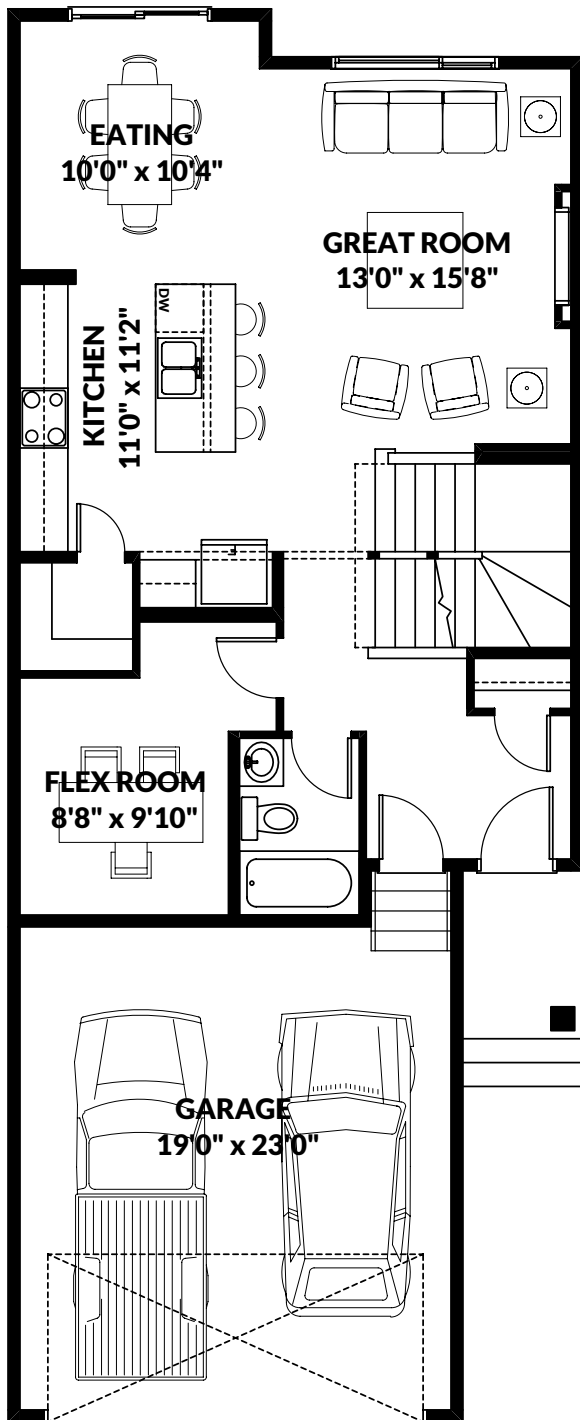
THIS FRONT DRIVE HOME FEATURES

- Feature paint wall in great room.
- Fireplace with mantle.
- Main floor flex room with full bath.
- Matte black hardware with chrome faucets.
- Iron spindle railing.
- BBQ gas line.
- Second floor pocket office.

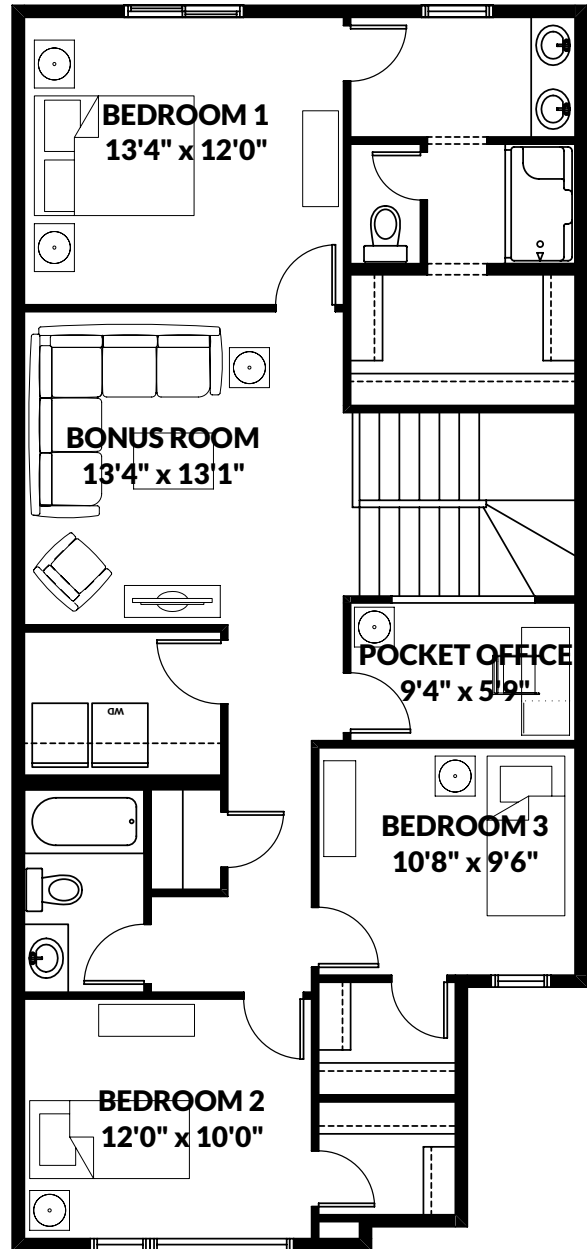
BETTER VALUE BY DESIGN
SINCE 1978 | HOMESBYAVI.COM

Homes by **AVI**

FLOOR PLAN



MAIN
873 SQ FT



UPPER
1,186 SQ FT

For more information or to book an appointment please contact us at **587.525.5184**

Prices are subject to change without notice. Actual floor plan, elevation, and square footage may not be exactly as shown. Square footage is measured to Alberta Building Code (ABC) regulations. Builder reserves the right to make changes without notice. E&OE.

Homes by **AVI**