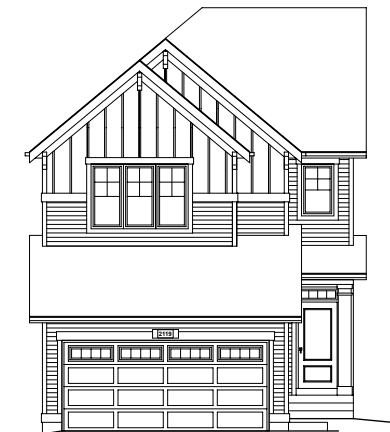


QUICK
POSSESSION

THE GABRIEL

2,059 SQ FT | 3 BED | 3 BATH

2119 MUCKLEPLUM CRESCENT SW



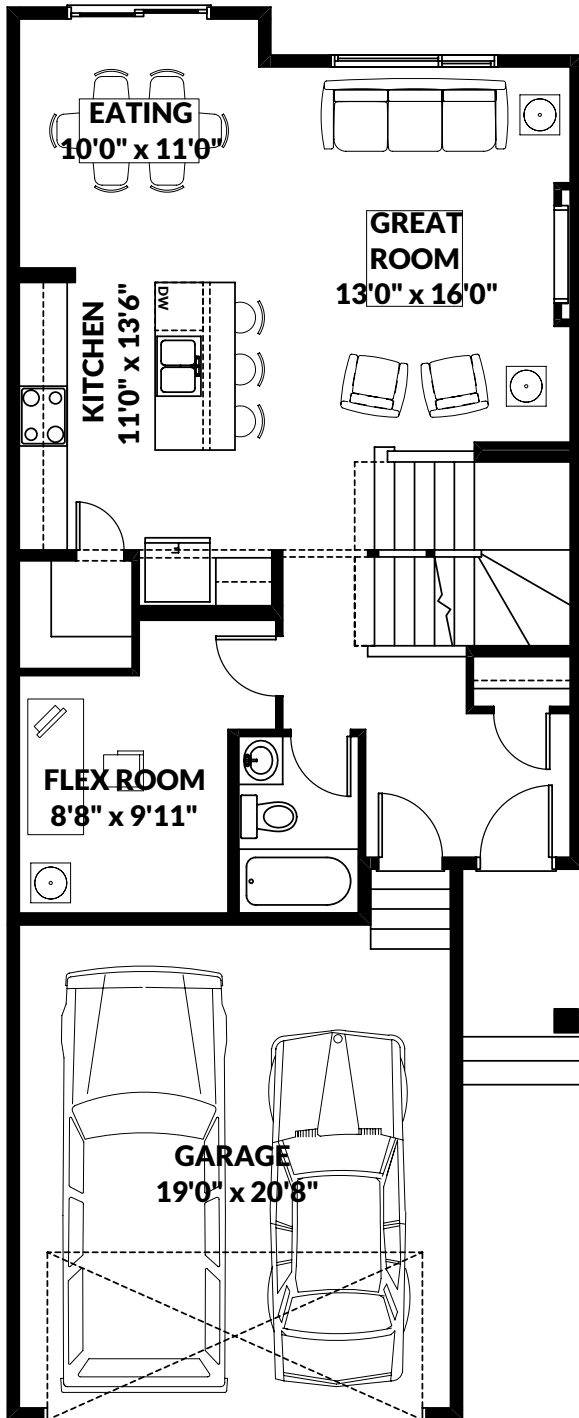
THIS FRONT DRIVE HOME FEATURES

- Main floor flex room with full bathroom.
- 39" upper cabinets with bulkhead.
- Chimney hoodfan and built-in microwave.
- Fireplace with mantle.
- Matte black hardware and faucets throughout.
- Second floor pocket office.
- Iron spindle railing.

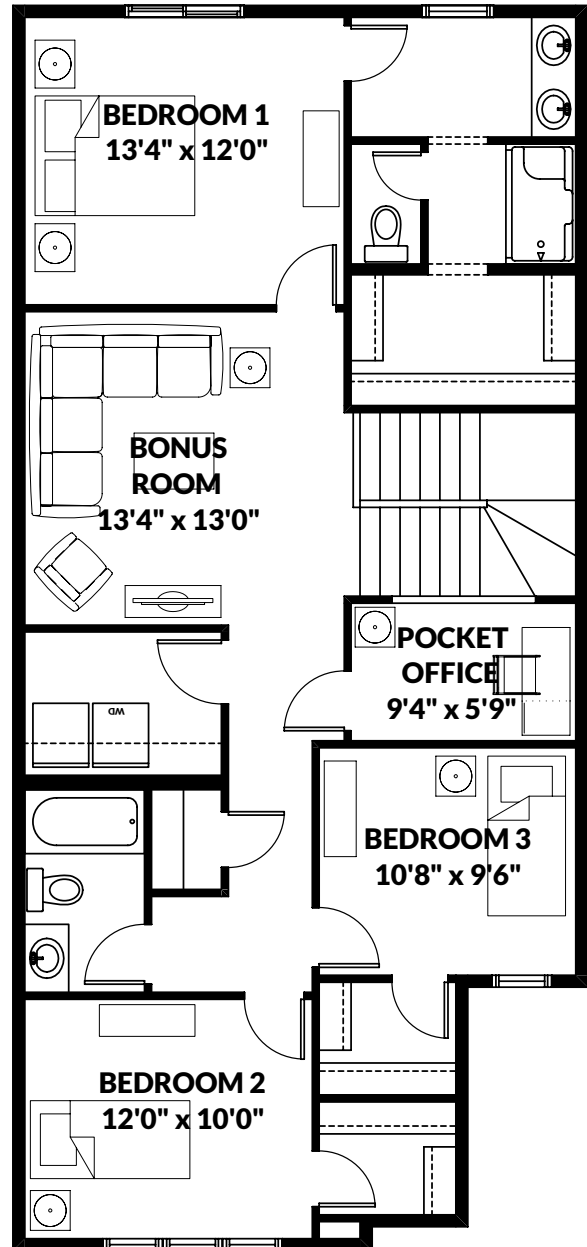
BETTER VALUE BY DESIGN
SINCE 1978 | HOMESBYAVI.COM

Homes by **AVI**

FLOOR PLAN



MAIN
873 SQ FT



UPPER
1,186 SQ FT

For more information or to book an appointment please contact us at **587.525.5184**

Prices are subject to change without notice. Actual floor plan, elevation, and square footage may not be exactly as shown. Square footage is measured to Alberta Building Code (ABC) regulations. Builder reserves the right to make changes without notice. E&OE.

Homes by **AVI**