

QUICK
POSSESSION

THE SASHA

1,523 SQ FT | 3 BED | 2.5 BATH

17215 3 STREET NW



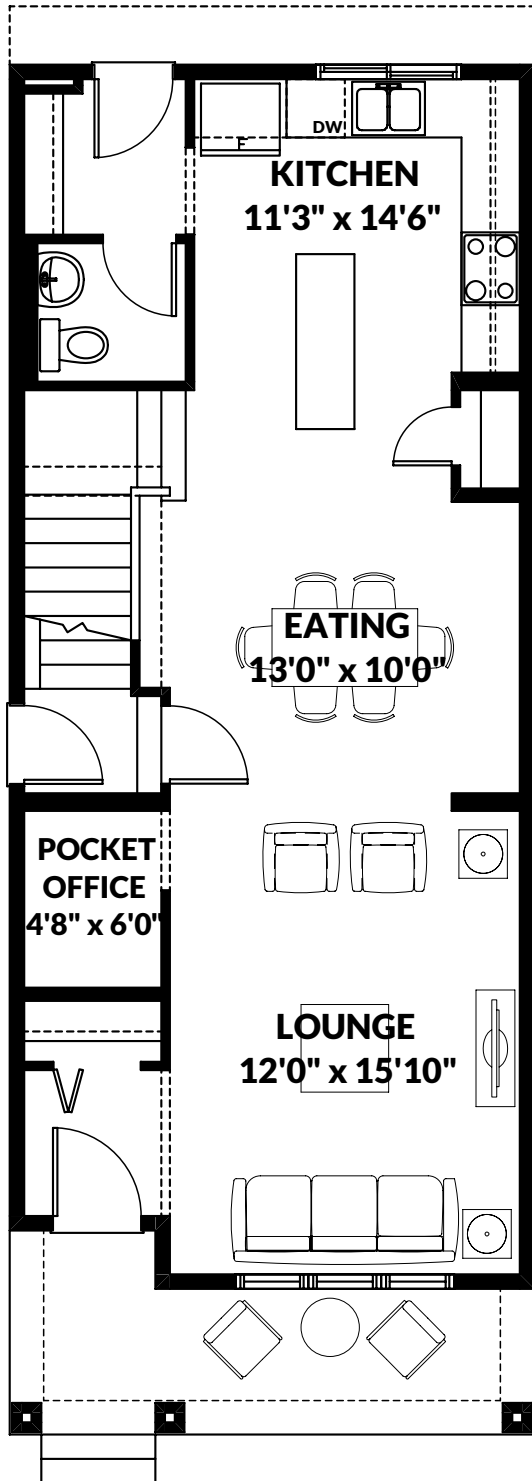
THIS LANED HOME FEATURES

- Side entrance, 9' basement ceiling height and drains for future suite.
- Chimney hood fan with built in microwave.
- 39" upper cabinets in kitchen with pot and pan drawers.
- Quartz countertops throughout.
- Upgraded ensuite shower with double sinks.
- BBQ gas line.

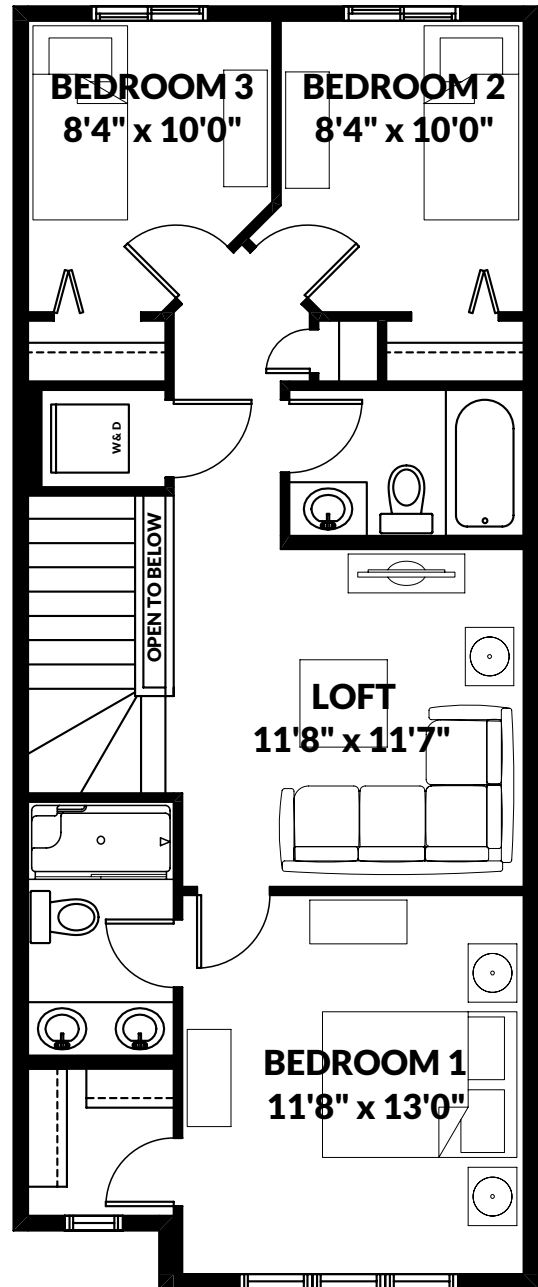
BETTER VALUE BY DESIGN
SINCE 1978 | HOMESBYAVI.COM

Homes by **AVI**

FLOOR PLAN



MAIN
746 SQ FT



UPPER
777 SQ FT

For more information or to book an appointment please contact us at **587.525.5095**

Prices are subject to change without notice. Actual floor plan, elevation, and square footage may not be exactly as shown. Square footage is measured to Alberta Building Code (ABC) regulations. Builder reserves the right to make changes without notice. E&OE.

Homes by **AVI**