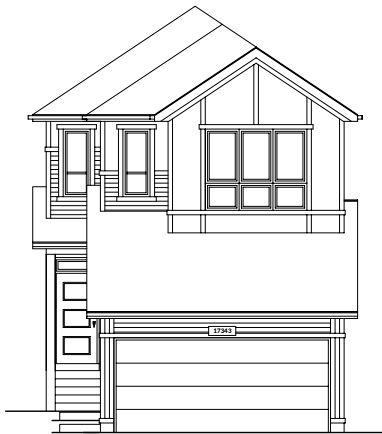


QUICK
POSSESSION

THE HALLADAY

1,908 SQ FT | 3 BED | 2.5 BATH

17343 3 STREET NW



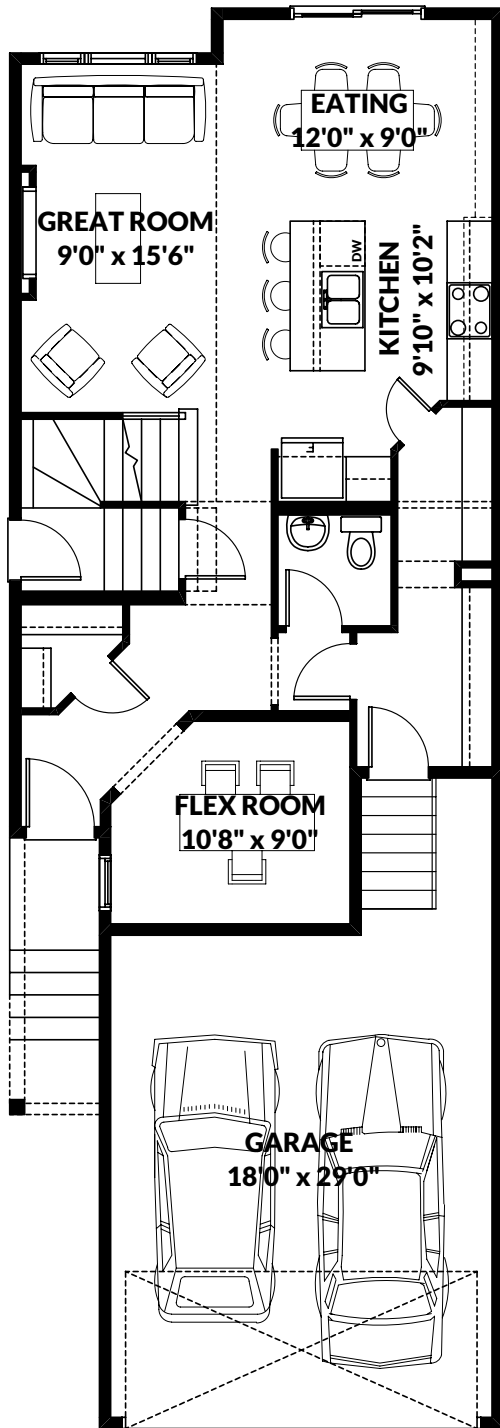
THIS FRONT DRIVE HOME FEATURES

- 39' upper cabinets in kitchen with chimney hood fan.
- MDF shelving in walk-through pantry.
- Matte black hardware and faucets.
- Upgrades shower with glass wall and double sinks.
- Paint grade railing with iron spindles.
- Fireplace with mantle.
- Side entrance.
- 9' basement ceiling height and drains for future suite.

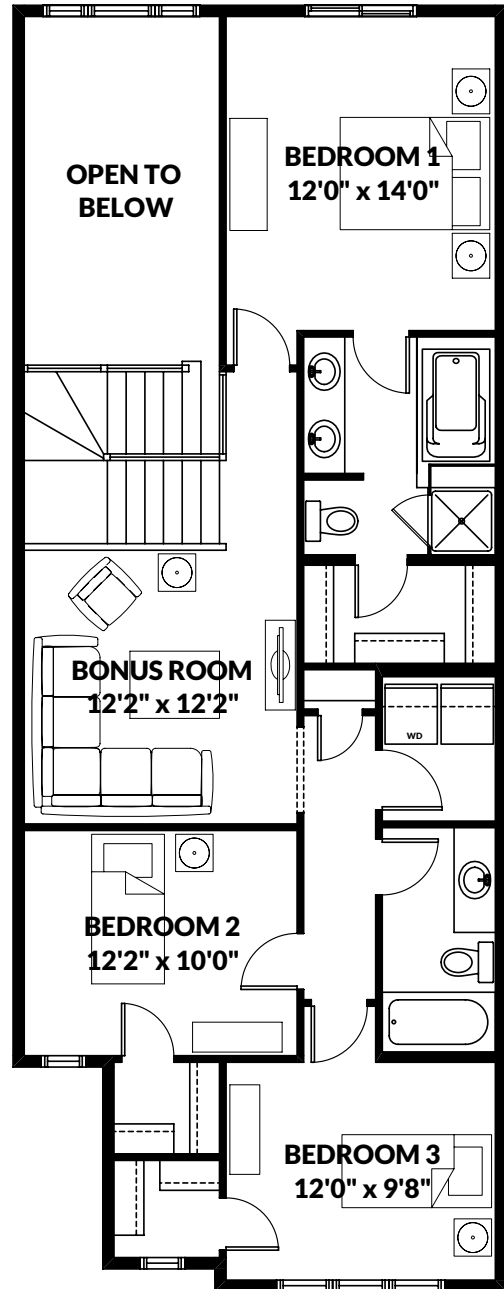
BETTER VALUE BY DESIGN
SINCE 1978 | HOMESBYAVI.COM

Homes by **AVI**

FLOOR PLAN



MAIN
830 SQ FT



UPPER
1,078 SQ FT

For more information or to book an appointment please contact us at **587.525.5091**

Prices are subject to change without notice. Actual floor plan, elevation, and square footage may not be exactly as shown. Square footage is measured to Alberta Building Code (ABC) regulations. Builder reserves the right to make changes without notice. E&OE.

Homes by **AVI**