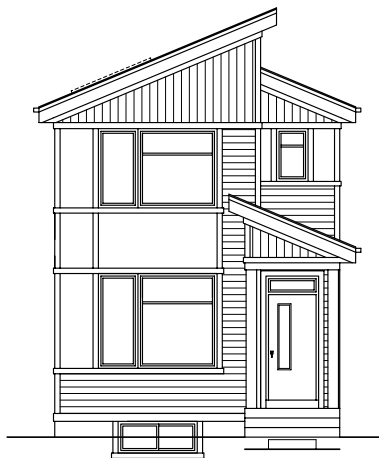


QUICK
POSSESSION

THE SASHA

1,523 SQ FT | 3 BED | 2.5 BATH

17328 2 STREET NW



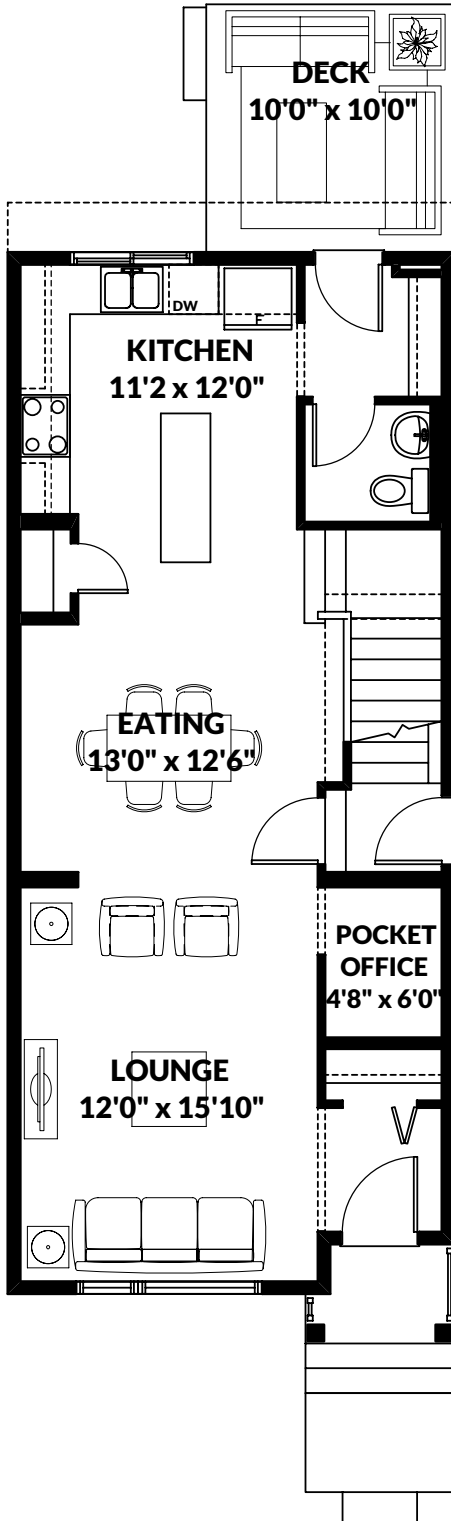
THIS LANED HOME FEATURES

- Chimney hood fan with built in microwave.
- 39" upper cabinets in kitchen with pot and pan drawers.
- Matte black hardware and faucets.
- Quartz throughout.
- Upgraded ensuite shower with double sinks.
- 10x10 pressure treated deck with aluminum railing
- BBQ gasline.

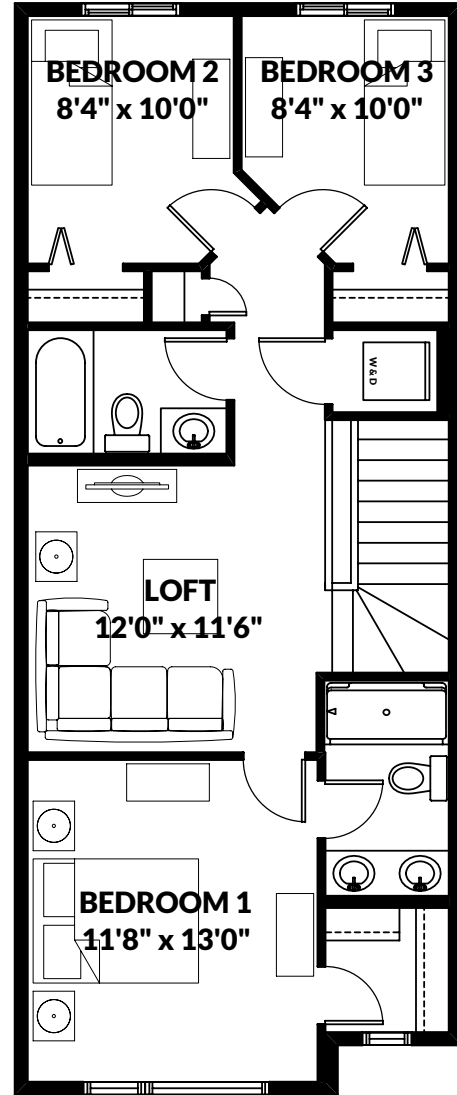
BETTER VALUE BY DESIGN
SINCE 1978 | HOMESBYAVI.COM

Homes by **AVI**

FLOOR PLAN



MAIN
746 SQ FT



UPPER
777 SQ FT

For more information or to book an appointment please contact us at **587.525.5095**

Prices are subject to change without notice. Actual floor plan, elevation, and square footage may not be exactly as shown. Square footage is measured to Alberta Building Code (ABC) regulations. Builder reserves the right to make changes without notice. E&OE.

Homes by **AVI**