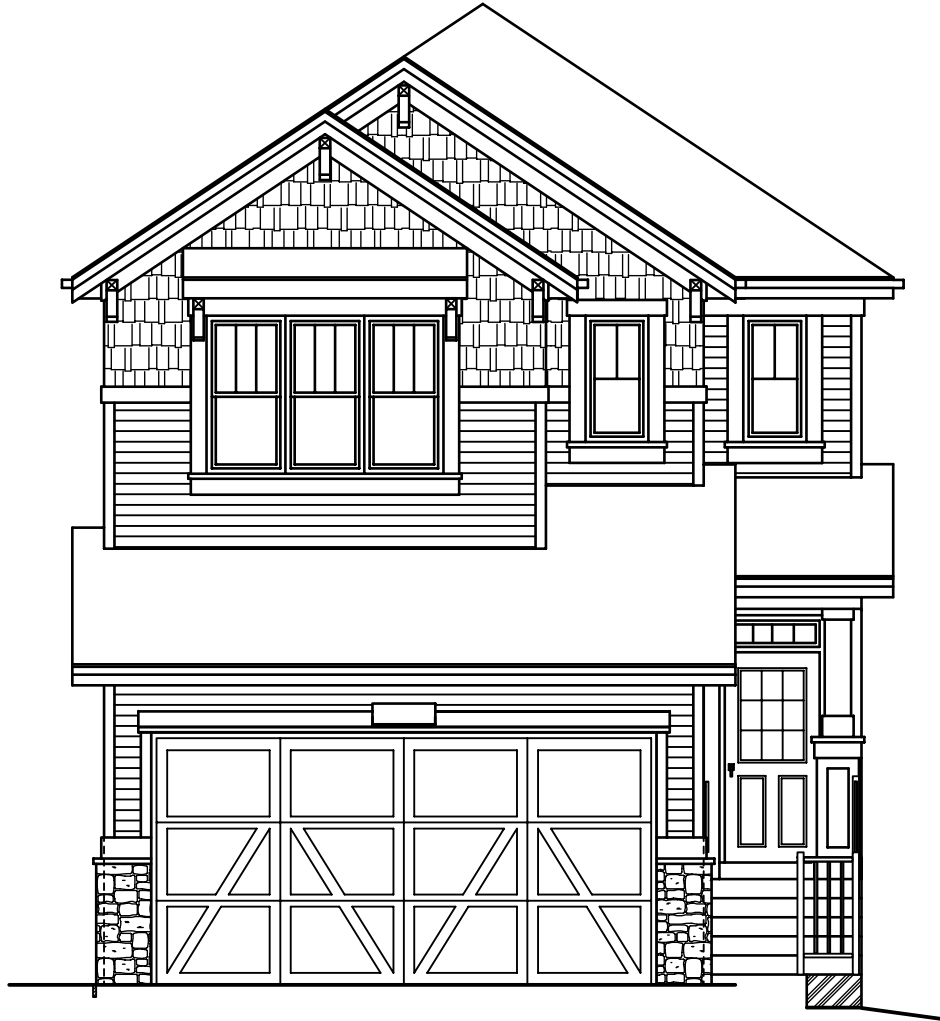


QUICK  
POSSESSION

# THE JEFFERSON

2,343 SQ FT | 3 BED | 3 BATH

60 WALGROVE PLACE SE



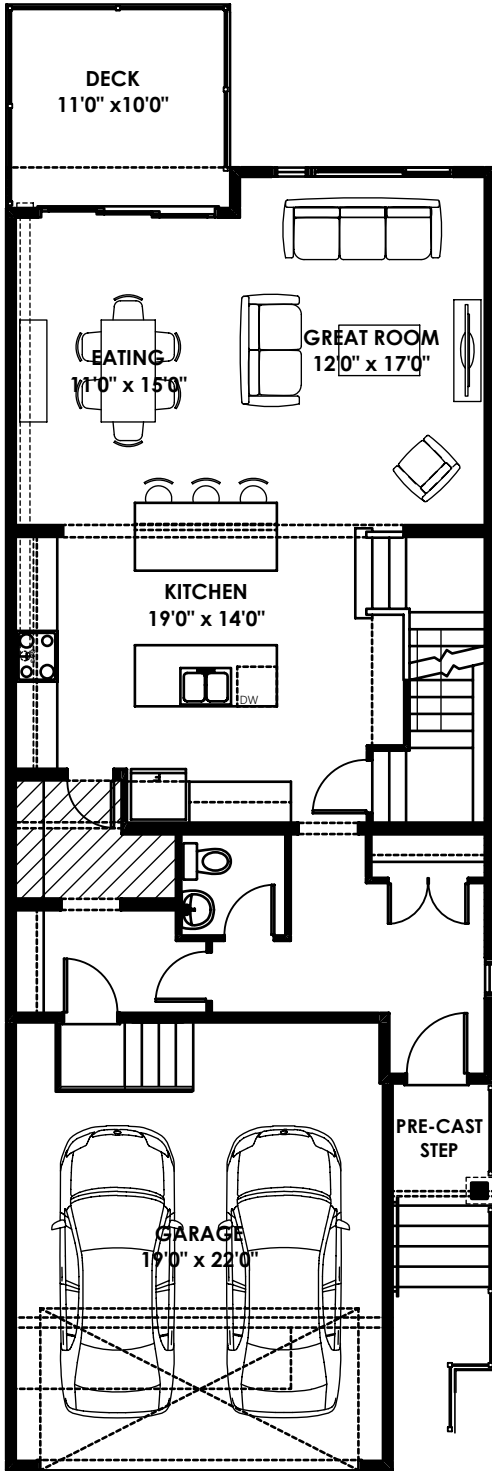
## THIS FRONT DRIVE HOME FEATURES

- Spacious Kitchen with Walk-in Pantry
- Double Vanity in Ensuite and Main Bathroom
- Walkout Basement

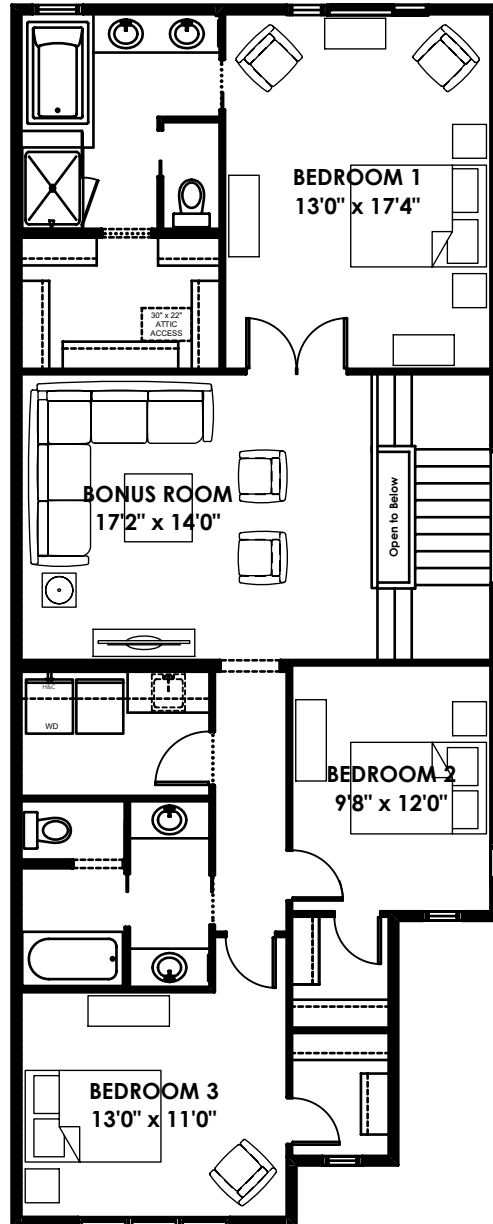
BETTER VALUE BY DESIGN  
SINCE 1978 | HOMESBYAVI.COM

Homes by **AVI**

# FLOOR PLAN



**MAIN**  
1,003 SQ FT



**UPPER**  
1,340 SQ FT

For more information or to book an appointment please contact us at **587.536.7272**

Prices are subject to change without notice. Actual floor plan, elevation, and square footage may not be exactly as shown. Square footage is measured to Alberta Building Code (ABC) regulations. Builder reserves the right to make changes without notice. E&OE.

Homes by **AVI**