

QUICK  
POSSESSION

# THE HEMSWORTH

2,222 SQ FT | 3 BED | 2.5 BATH

76 WALGROVE PLACE



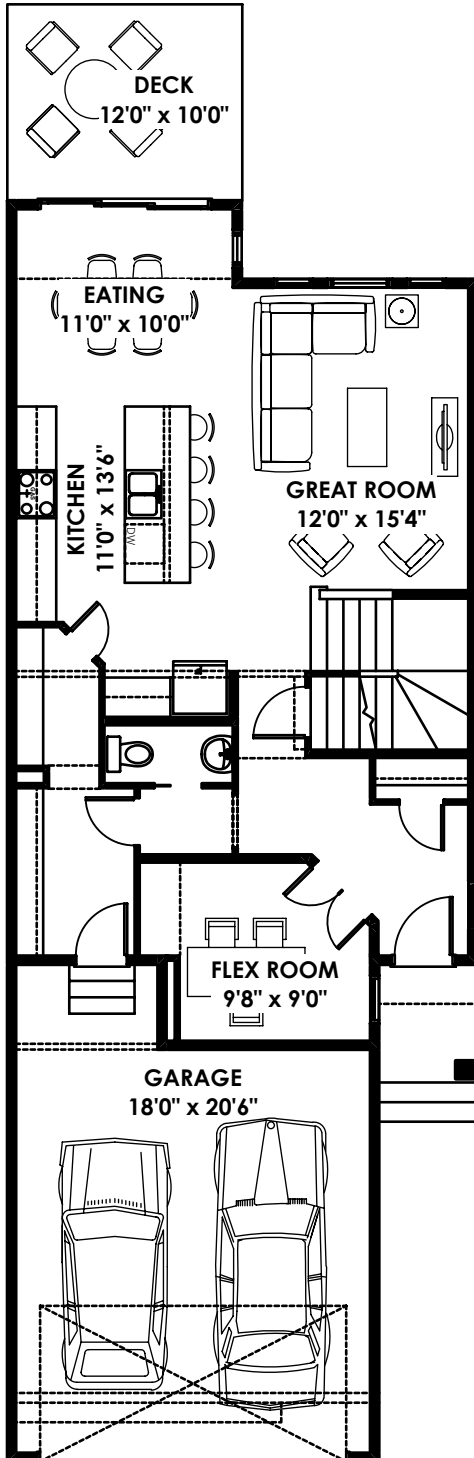
## THIS FRONT DRIVE HOME FEATURES

- Fantastic Walkout onto Greenspace
- Massive Upper Master Suite
- Huge Central Upper Loft Space
- Extended Kitchen & Nook

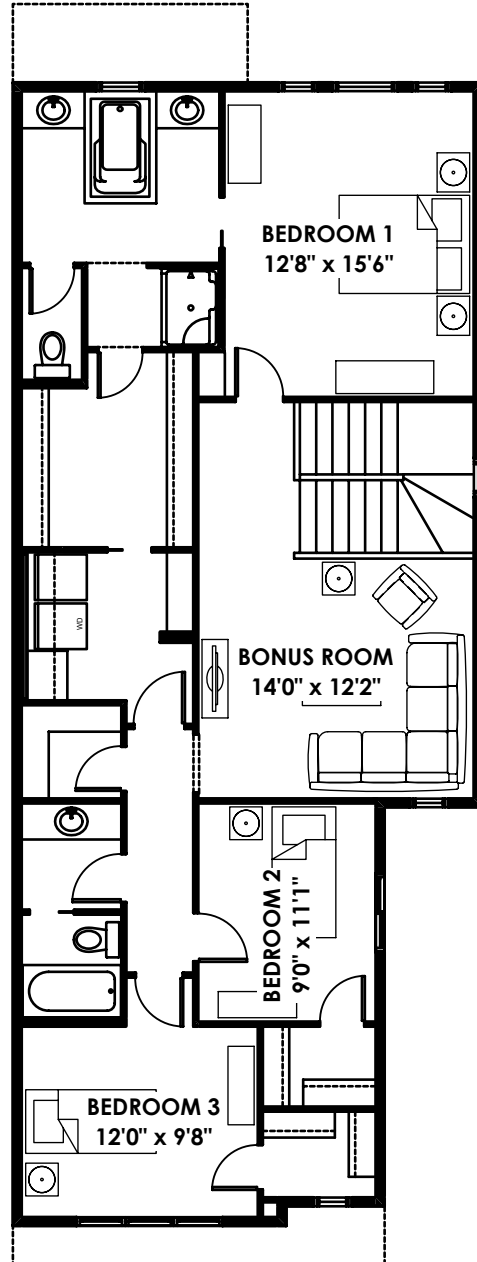
BETTER VALUE BY DESIGN  
SINCE 1978 | HOMESBYAVI.COM

Homes by **AVI**

# FLOOR PLAN



**MAIN**  
937 SQ FT



**UPPER**  
1,285 SQ FT

For more information or to book an appointment please contact us at **403.536.7272**

Prices are subject to change without notice. Actual floor plan, elevation, and square footage may not be exactly as shown. Square footage is measured to Alberta Building Code (ABC) regulations. Builder reserves the right to make changes without notice. E&OE.

Homes by **AVI**