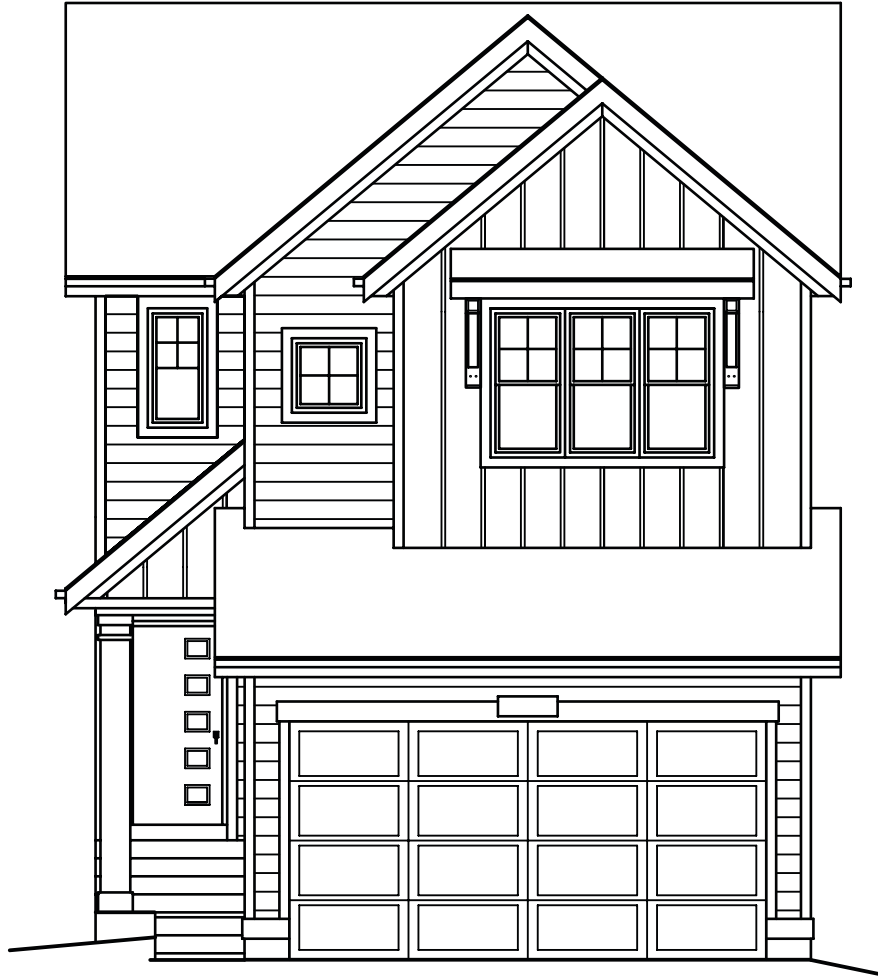


QUICK
POSSESSION

THE GABRIEL

2,023 SQ FT | 3 BED | 2.5 BATH

87 VERSANT WAY SW



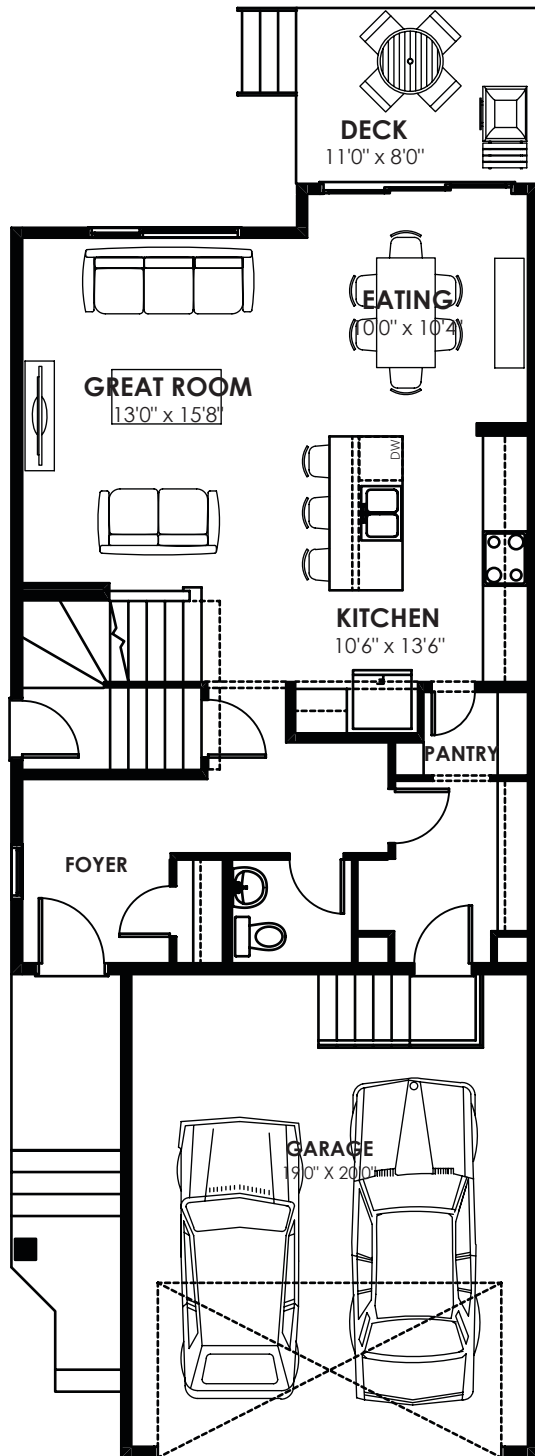
THIS FRONT DRIVE HOME FEATURES

- 9' basement foundation
- Side door entry
- Gourmet kitchen
- Located on a huge pie lot

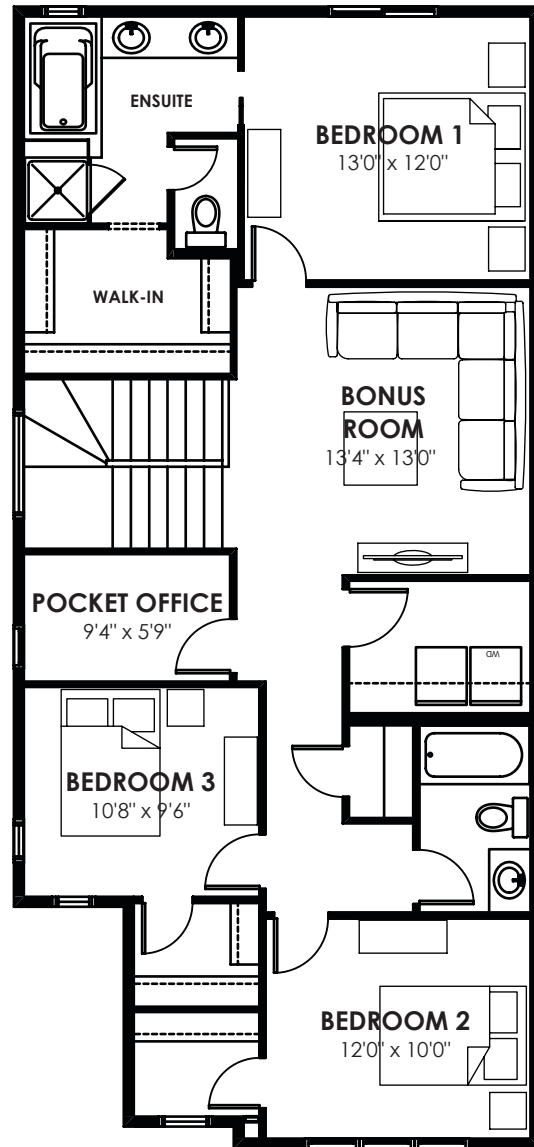
BETTER VALUE BY DESIGN
SINCE 1978 | HOMESBYAVI.COM

Homes by **AVI**

FLOOR PLAN



MAIN
838 SQ FT



BASEMENT
1,185 SQ FT

For more information or to book an appointment please contact us at **403-536-7193**

Prices are subject to change without notice. Actual floor plan, elevation, and square footage may not be exactly as shown. Square footage is measured to Alberta Building Code (ABC) regulations. Builder reserves the right to make changes without notice. E&OE.

Homes by **AVI**